

GENERAL REPORT
OF THE
Minister of Public Works
OF THE
PROVINCE OF QUEBEC
FOR THE YEAR ENDING 30th JUNE
1936

To the Honourable E. L. Patenaude, P.C., K.C.,

Lieutenant-Governor of the Province of Quebec.

Sir,

In compliance with the Revised Statutes of the Province of Quebec, 1925, and their amendments, I have the honour to submit a general report on the working of the Department of Public Works during the fiscal year 1935-36.

I have the honor to be,

Sir,

Your obedient servant,

J. S. Bourque

Minister of Public Works.

Quebec, October 6th, 1936.

HISTORICAL NOTES

of the

DEPARTMENT

1867-1888, Agriculture and Public Works

1888-1901, Public Works

1901-1905, Colonization and Public Works

1905-1931, Public Works and Labour

1931-1934, Public Works

1934-1936, Public Works, Game and Fisheries

1936 to date, Public Works (Bureau of Mines under
the control of the Minister)

PUBLIC WORKS

Hon. J. N. Francoeur, K.C., Minister till June 11th, 1936.

Hon. Césaire Gervais, K.C., Minister from June 27th to August 26th, 1936.

Hon. Colonel J.S. Bourque, Minister since August 26th, 1936.

Ivan E. Vallée, B. Sc. A., Deputy Minister.

LIST OF THE SERVICES AND PRINCIPAL OFFICERS

A.- Construction and Maintenance of Highway Bridges.

Olivier Desjardins, B. Sc. A.,Chief Engineer and Assistant
Director of Railways.

J. G. O'Donnell, B. Sc.,Maintenance Engineer.

F. B. Painchaud, B. Sc. A., Engineer of metallic construction.

Camille Milot, B. Sc. A., Assistant to Chief Engineer.

J. C. L. Trempe, B. Sc. A., Assistant to Maintenance Engineer.

B.- Construction and Maintenance of Legislative and other Buildings, including Court Houses and Gaols.

Sylva Frappier Architect and Director of Public
Works.

Léopold Fontaine, B.A., Architect.

A. H. Tremblay Architect.

C.- Fire Prevention.

Ernest Lavigne, B. Sc., A. Commissioner.

F. X. Ahern, B. Sc., Assistant Commissioner.

D.- Legal

Maxime Morin, K.C., Law Officer.

E.- Accountancy.

J. A. Taillon, Chief Accountant.

Léonidas Blais Assistant Accountant.

F.- Secretary's Office.

J. Alphonse Drolet Secretary.

René Dupuis Assistant Secretary.

G.- Registrar.

J. E. Garneau Registrar.

J. G. Duchesneau Assistant Registrar.

H.- Purchasing Branch

Adélard Côté Purveyor, at Quebec, and General
Superintendent.

J. E. Lesage Purveyor, at Montreal.

I.- Post Office

Aimé Dechêne Postmaster.

J. L. Hudon Assistant Postmaster.

O. Fréchette Chief Clerk.

J.- Railways.

K.- Toll Bridges and Roads.

(Both services are directed by the Deputy Minister)

L.- Embellishment and Floral Decorations.

Louis CholletChief Gardener.

M.- Workshops.

Georges Lavoie Superintendent and General
Overseer.

Ed. Blouin..... Foreman of joiners.

Alphonse Proulx Foreman of plumbers.

Ferdinand Bertrand Foreman of electricians.

Ed. Picard Foreman of painters.

Georges Fleury Foreman of laborers.

Jos. Paré Head of heating system.

N.- Maintenance of Parliament Buildings
(Cleaning)

Théodore Bernard Superintendent.

Léonidas Hardy Assistant-Superintendent.

CHAPTER I
CONSTRUCTION AND MAINTENANCE OF HIGHWAY BRIDGES
Report of the Chief Engineer

Quebec, June 30th, 1936.

To the Honourable the Minister of Public Works,

Q u e b e c , P. Q.

Sir,

I have the honour to submit my report on construction and maintenance of bridges coming under our control, which extends only to permanent structures, such as steel or concrete bridges, having a span length of at least twenty feet (wooden bridges do not come under our jurisdiction).

CONSTRUCTION BRANCH

This year as in former years we received many requests from various municipalities asking for our cooperation towards the reconstruction of some of their bridges and the number of structures erected during the past fiscal year is appreciably greater than that for the preceding year. The projects actually under construction are also more numerous.

As in the past, special attention has been paid to every one of the demands received from municipal bodies and, wherever we could foresee the possibility of erecting a permanent structure, our engineers were sent to visit the site and collect all required data to enable them to prepare the necessary plans for the execution of the project.

Most of the bridges built during the year replaced old wooden bridges which, owing to their limited capacity and insufficient width of roadway, no longer answered the requirements of present day traffic and did not afford proper safety to the travelling public. In each case we have endeavoured to adopt the most economical design suitable to local topographical conditions which constitute a governing factor in the selection of the proper type of bridge and affect to a large extent the cost of the undertaking.

We have also, when necessary, worked in close collaboration with the officials of the Highway Department in order to secure for the new construction the best location to suit the general alignment of the road.

The majority of bridges erected this year being composed of relatively short spans have been built of reinforced concrete and, in accordance with the practice followed in recent years, we have encouraged the use of materials from the province of Quebec and the employment of local labour in the prosecution of the work.

Whenever possible the works executed in accordance with the plans and specifications prepared by the Department have been carried out under the direct supervision of our engineers and inspectors in order that we might be kept well posted on the nature and extent of the work done so as to enable us to exercise a more efficient control over the execution of the project. The services rendered by the staff of the laboratory have also proved most valuable to us in this connection in supplying the necessary information concerning the quality of the materials and concrete used.

Photographs of several bridges built under the control of the Department are annexed to the present report.

The most important amongst the bridges erected between July 1st, 1935, and June 30th, 1936, are as follows:

Bridge over Patrick brook,
at St. Côme, county of Beauce.

Bridge over Le Bras river,
at St. Victor, county of Beauce.

"Barnett" bridge in the Township of
Potton, county of Brome.

Bridge over Maskinonge river, between
St-Justin and Ste. Ursule, county of Maskinongé.

Bridge over Trois Saumons river,
at St-Jean Port Joli, county of L'Islet.

Bridge over Becancour river, at Ste. Anastasie de
Nelson, Range 8, county of Megantic.

"Fraser" bridge, at Cap St. Ignace,
County of Montmagny.

Bridge over Neigette River,
at St. Donat, county of Rimouski.

Bridge over Arton brook, at Trois-Pistoles,
county of Riviere du Loup.

Bridge over Yamachiche river, at
St.Etienne des Grès, county of St. Maurice.

Bridge over du Nord river, at St. Joseph de
Mont Rolland, county of Terrebonne.

The most important projects under construction on June 30th,
1936, are:

Bridge over du Nord river, at
St. André East, county of Argenteuil.

Bridge over Petite Cascapedia river,
at New Richmond, county of Bonaventure.

Bridge over Aux Saumons river, in the
Township of Lingwick, county of Compton.

Bridge over Eaton river,
at Cookshire, county of Compton.

Bridge over Black river,
at Ulverton, county of Drummond.

Bridge over Grondines river,
at St. Ubald, county of Portneuf.

Bridge over St. Francis river,
at Ascot Corner, county of Sherbrooke.

Bridge over du Nord river,
at Piedmont, county of Terrebonne.

"Champoux" bridge over St. Francis river,
at Disraeli, county of Wolfe.

The following statement shows the work accomplished by the
bridge branch since 1908:

Number of bridges erected from the 1st of July, 1908, to June 30th, 1936	1,349
Total length of superstructure of the bridges built.....	140,304 ft
Number of bridges erected from July 1st, 1935, to June 30th, 1936	37
Number of bridges under construction on June 30th, 1936..	26
Total length of bridges under construction	2,922 ft
Total cost of bridges built since 1908	\$ 22,127,321.82
Government subsidies towards bridges built	16,381,775.07
Estimated cost of works under way	386,708.10

It may be noted that the amount representing the total cost of
bridges built since 1908, as shown in the foregoing statement, has increased
in a much smaller proportion than it had in the preceding year and that the
estimated cost of works under way is also inferior to that given in our last
report. This is due to the fact that the extensive projects included in the
"program for the construction of large bridges" authorized by Act 21 Geo. V,
ch. 5, and inaugurated in September 1931, had all been practically completed
during the preceding year.

As anticipated in our previous report, the few works required to complete the Island of Orleans bridge, the last one of the bridges built under authority of the aforesaid Act, have been carried out and the bridge opened to traffic at the beginning of the fiscal year, July 6th, 1935.

- B -

MAINTENANCE BRANCH

J.G. O'Donnell
Maintenance Engineer

Although remaining the property of the Municipal Corporations where they are situated, bridges subsidized by the Government and erected in conformity with the plans and specifications prepared by, or approved by the Department of Public Works, automatically come under the control of the Maintenance Service as soon as they have been completed and accepted by the Department and Municipal Corporations.

As signalized in previous reports, this branch, inaugurated in 1922, was organized first of all with the object of cooperating with the Municipal Corporations in giving them, the required technical advices, and supplying them with all the necessary plans and specifications and reports in order that their bridges, would be maintained in good order; and only important works were subsidized by the Government.

In 1930, our branch was called upon to direct, control and defray the total cost of the repairs and maintenance to these bridges. Herewith is an extract from the circular, transmitted in April and May 1930, to all the secretary-treasurers of the Municipal Corporations, throughout the Province, regarding the additional aid accorded by the Government.

"We wish to acquaint you that the Government has decided
"to aid, more effectively, the municipalities of the Province
"of Quebec to put the permanent bridges in good order...."

"It must be understood that the Government has no wish to
"assume and does not assume ownership of the bridges. This, as
"in the past, will remain the property of the municipalities,
"but it proposes to help in the maintenance, by doing the work
"itself or by refunding the cost of the work which the municipal-
"ities will do, after approval by the Department...."

This initiative adopted by the Government relieves not only the interested corporations of a more or less heavy budget, for bridge repairs and maintenance. It also affords a considerable means of helping the people where the bridges are repaired, by employing local labour, and buying the necessary materials whenever it is possible; in the various localities where

the works are being performed, as the majority of these repairs are carried out by day work, under the jurisdiction of a foreman from the Maintenance Branch.

The importance of this branch, increases from year to year in direct ratio to the evolution of the highway system throughout the Province. This naturally entails the disappearance of old timber viaducts and wooden bridges, which are replaced by permanent structures. Owing to the ever increasing weight of trucks using the highways and the density of circulation, many bridges, built twenty, twenty-five and thirty years ago, do not meet with present day requirements. For this reason many difficult problems have to be solved. Although allowing for the factor of safety taken into account when these bridges were constructed, we find it necessary to reinforce these superstructures and make other alterations, in order to permit the traffic to circulate on them in perfect safety. These improvements and alterations are carried out under our control, but as they are not purely maintenance works, the municipalities are called upon to pay a part of the cost.

Such works were carried out to the following bridges:

The MacKenzie bridge between Richmond and Melbourne, Richmond County: Reinforcement of the superstructure, construction of a cantilever side-walk for pedestrians and construction of an asphalt plank floor on creosoted wood deck.

Bridge over the Little Montreal River, at Napierville, Napierville County: Reinforced concrete arch; original roadway 16' with 3.5 ft. side-walk on the upstream side. This arch was partly demolished and the width of the roadway increased to 30'. A new side-walk 4'6" wide was constructed. Advantage was taken of the demolition of part of the arch to straighten the roadway of the approaches, so as to give better access to the bridge.

Fort Rose Bridge, at New Glasgow, Terrebonne County: The substructure was repaired. Advantage was taken of this work to increase the width of the roadway from 14' to 18' by placing additional stringers, and the roadways leading to the bridge were realigned thus eliminating dangerous curves at either end of the bridge.

Bridge over des Orignaux River, at St. Pierre les Becquets, Nicolet County: The back-fill at the back of the abutments was removed and the length of the bridge was increased from 150' to 300'. New piers and abutments were added and concrete slabs poured on the additional spans.

We could also cite many other works carried out since 1930 where

due to these alterations, the reconstruction of several bridges was avoided thus saving a considerable sum of money.

Regarding maintenance, with the limited budget placed at our disposal, we have to choose among the many requests received, those which are more urgent and after studying the problems involved, carry them out as economically as possible.

During the period from the 1st of July 1935 to the 30th June 1936, repairs were made to 310 bridges, 80 of which entailed works which cost more than \$500.00.

Among the more important, we may mention:

Bridge over the Becancour River, between Daveluyville and Maddington Falls, Arthabaska County.

"Du Village" Bridge, at St. Pie, Bagot County.

The two big bridges over Famine and Chaudiere rivers, at St. Georges de Beauce.

Galipeault Bridge, "Rang du Gravier", at St. Raphael, Bellechasse County.

Jackson and Fulford Bridges, in Brome Townships.

Aubry-Village and Beurrerie Perras bridges, at St. Jean Chrysostome, Chateauguay County.

Emison Bridge, at St. Malachie, Dorchester County.

Gilmour Creek Bridge, near Ironside, at West Hull, Gatineau County.

Griffin Bridge, at St. Constant, Laprairie County.

Gagné Bridge, at St. Louis, Lotbiniere County.

Darwin Bridge, over the Ouareau River, at Rawdon, Montcalm County.

Bridge over the South River at St. François de Montmagny.

Trahan Bridge, in front of the Cathedral, at Nicolet.

Magenta-Fournier Bridge, at L'Ange Gardien, Rouville County.

Mary Street Bridge, at Magog, Stantead County.

and many others where important works were carried out.

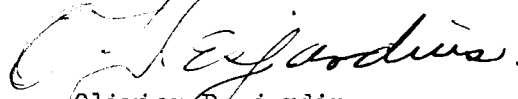
It was a very active year although the work during the latter part of the season was retarded, due to particular circumstances.

In addition to the bridges owned by the municipal Corporations, our Maintenance Branch supervises and maintains the toll bridges belonging to the Government in good order. Each year certain repair works have to be

carried out to prevent them from deteriorating.

It gives me much pleasure in terminating, to express my satisfaction for the excellent work performed by all the personnel of these two branches of the Department of Public Works.

Respectfully submitted,

A handwritten signature in cursive script, reading "O. Desjardins".

Olivier Desjardins

Chief Engineer.

CHAPTER II
CONSTRUCTION AND MAINTENANCE OF GOVERNMENT BUILDINGS
Report of the Architects Branch

Quebec, June 30th, 1936.

To the Honourable the Minister of Public Works,

Q u e b e c .

Sir,

We have the honour to submit the report covering work which received our attention during the fiscal year 1935-36.

This work, which we will describe briefly, was performed on buildings usually classified as follows:

- A.- Court Houses and Gaols.
- B.- Legislative and Public Buildings.
- C.- Normal and special schools.
- D.- Various constructions, such as Morgues, Registry Offices, etc.

- A -

COURT HOUSES AND GAOLS

AMOS (Abitibi):

Building a sidewalk; repointing defective joints of two chimneys and of bricks over the cornices. Painting the plastering inside as well as the woodwork; varnishing the floors; painting the fence and fire escape, also the doors of the gaol's fence wall and roof of building. Repairing several ceilings. Installing an iron-pipe handrail at the main entrance. Fixing the windows. Changing doors of the office and Judge's room. Laying oilcloth in kitchen of the gaoler's apartments. Furniture supplied for the Prothonotary's office.

ARTHABASKA (Arthabaska):

Changing the water piping and suppression of water tank. Supplying a dozen padlocks for cells of gaol. Laying oilcloth in the gaol.

CAMPBELL'S BAY (Pontiac):

Repair and housecleaning: (cleaning and painting the plastering and woodwork; painting mostly all the rooms). Repairing the fence wall. Painting walls of the Court room.

CHICOUTIMI (Chicoutimi):

Court House: Painting and papering the kitchen walls; making a cupboard with glass doors; installing a window with frame; improving the heating system. Renewing the furnace grates.

Gaol: Installing wickets in a few windows of the audience room so as to improve ventilation. Extending the drainage pipe to the cesspool. Installing four valves in the piping of the toilet-room.

HULL(Hull):

Replacing four sections of furnace grates. Installing two ventilators in windows of the Judges' bedrooms. Furnace repairing and installing safety-valves. Repairs to four windows. Renewing hot water tank.

JOLIETTE (Joliette):

Repairs to roof of shed in the prison yard. Renewal of two furnaces. Two regulating valves installed on the heating system in the Judge's office and a radiator valve in the Superior Court. Repairs to the electric stove in Gaoler's quarters. Repairing roof over the Prothonotary's vault. Painting the outside of shed and the kitchen floor.

LA MALBAIE (Saguenay):

Replacing motor of heater in furnace room. Alteration and maintenance work. Repairing the furnaces. Cleaning all the furniture in various rooms of the Court House. Cleaning out the Prothonotary's vault and putting in furniture. Furniture: (filing cabinets, metal lockers, chairs for jury-men). Making a counter in the Registrar's office. Repairing a w.c. Eighteen padlocks supplied for cells. Renewal of heater and water tank.

MONT LAURIER (Montcalm):

A wash-basin installed in the bathroom of gaoler's lodgings. Alteration work to surrounding wall and installing a French drain at its base. Replacement of hot water tank. Putting the porch of the main entrance in good order. Repairs to the fence around the grounds.

MONTMAGNY(Montmagny):

Repairing the fence around the grounds. Cleaning cells and passages of gaol. Digging a cellar. Repointing part of surrounding wall and of stone facings of the Court House and Gaol. Repairing defective plastering. Painting all brickwalls and a few windows. Repairs to sidewalk; construction of a small pent roof over a side door. Repairs to roof. Cleaning out the heating system. Renewing safety-valves and two sets of gratings. Repairs to motor of small pump on drainage system in cellar. Housecleaning and painting some of the rooms and offices. Installing a hot water heater.

MONTREAL (Montréal):

Court House:

New Building: Laying-out offices for the Department of Commerce and Industry; (divisions, plumbing appliances; decoration). Repairs to roof and skylight. Repairing the elevators. Altering of division in one of the Revenue Collector's offices. Putting up additional partitions in offices of the Highway Department; making cupboards. Installing a swinging door in the entrance of the Revenue office. Providing double-windows for the bookbinder's shop. Cleaning walls and ceilings in offices of the Revenue service.

Old Building: Furniture supplied for the offices of the Librarian and buying a few pieces of furniture for the library of the Bar. Installing current intakes in the library of the Bar. Repairing elevators. Painting and cleaning the passages and stairways. Repairs to the roof. Improvement work done to floor in the high constable's office. Repairing defective parts of electric system in the Prothonotary's vaults. Repairs to linoleum in library. Installing linoleum on tables of the library and making furniture: tables and chairs. Putting up a glass partition in the hall of the library. Repairing an elevator. Building cupboards in vault No. 13.-office of the Provincial Police.

Bordeaux Gaol: Construction of a garage at the Gaoler's residence. Necessary machinery to improve laundry service. Repairing the walk on the guard wall. Repairing the walls around the boilers.

NEW CARLISLE (Gaspé):

Digging an artesian well and installing a pump for the domestic water system. Construction of a wire fence. Housecleaning in three rooms of Gaoler's lodgings.

NICOLET (Nicolet):

Painting the roof. Repairing and painting the flights of steps. Repointing a brick wall. Painting of windows and doors. Laying-out a vestibule at the entrance of gaoler's lodgings.

PERCE (Gaspé):

Installing safety-valves on furnaces. Repairing entrance doors.

QUEBEC (Quebec):

Court House: Various work done in basement of the Annex to make a place for the nightwatchmen, charwomen, etc. Repairs to the elevators; maintenance work to the plumbing and heating systems. Making furniture for the shops.

Repairing the marble walls of passages. Converting a toilet-room into a photographic room for the judicial archives.

Ventilation of the Court of Sessions of the Peace. Installing a telephone cable in basement of the Annex.

Quebec Gaol (men): Repairs to the roof. Converting a few halls into a Chapel. Installing a pump on the domestic water system. Sundry plumbing work. Making benches in our work shops for the Chapel.

Refuge of Notre-Dame de la Merci (gaol for women): Repointing; repairs to roof. Widening of the alley from Gomin Road to the gaol. Repairs to the elevator. Renewal of furnace gratings. Repairing the boilers.

RIMOUSKI (Rimouski):

Repairs to a porch; new floor in bathroom and in two offices; doing a bedroom over with wall-paper; displacing six radiators; building a cupboard in the prisoners' kitchen; mending doors and window-frames; repairs to ceilings in the passages, toilet-rooms and common rooms of gaol. Supplying a library equipped with shelves for the Magistrate's office.

RIVIERE DU LOUP (Kamouraska):

Repairs to furnaces. Putting the radiators in the Judge's room in good order. Repairing the domestic water system. Installing metal cabinets in the lawyers' cloak-room. Repairing defective parts of the piping of the hot water system. Renewal of water tank. Repair work to the domestic water inlets and replacement of all the old galvanized iron piping by copper piping.

ROBERVAL (Roberval):

Laying down cork-oilcloth in the Prothonotary and Sheriff's offices. Renewal of three sets of gratings on furnaces and heater. Repairs to the roof. Renewing a hot water boiler. Painting windows and doors. Repairs to the fence and painting. Levelling the grounds.

SHERBROOKE (St. François):

Court House: Repairing the porch of the entrance door to the guardian's quarters; putting in good order the asphalt floor of the balcony over the porch of the main entrance. Repairing the guard-rail of the main-stairs. Insulating the roof. Repairs to the elevator.

SOREL (Richelieu):

Alteration work to a sewer pipe; installing a clean-out on drainage. Laying oilcloth in Sheriff's office and linoleum in the Prothonotary's vault. Renewing part of fence surrounding the Court House.

ST-HYACINTHE (St-Hyacinthe):

Repairing the piping of a wash-basin. Installing stokers on the heating system. Repairing windows in the passage of the cells. Strengthening the iron bars and repointing; replacement of two stone sills; repairing the woodwork and plastering in the main stairway. Repairing the walls of the skylight. Making a table for the Prothonotary.

ST. JOHNS (Iberville):

Lengthening a counter in the Clerk's office.

ST. JEROME (Terrebonne):

Switches and plugs installed in the gaol, in the official stenographer's office and on the Judge's bench. Installing a door-closer on the main door of the Court House.

St. Scholastique: Demolishing the old Court House. The construction of this building dated back to the year 1866 when it served to replace the Court House destroyed by fire in 1865 and which had been erected in 1859. The Court House of St. Scholastique was surrendered in 1924, the county seat of the judicial district of Terrebonne being transferred to St. Jerome where the construction of a new building had been started in 1923 and completed in 1924.

ST. JOSEPH (Beauce):

Repairing a cesspool; replacing defective pipes in the cellar; alteration work to the electric system; repairs to gutters; temporary repairs to roof of shed in the prison yard. Renewing furnace gratings. Repairing a certain portion of the iron fence. Replacing some accessories of the galvanized tin water tank.

SWEETSBURG (Bedford):

Renewing the gaol's kitchen floor. Painting the walls of cells. Altering the plumbing. Housecleaning in two rooms of the gaoler's lodgings. Varnishing the floor of the Prothonotary's office.

THREE RIVERS (Three-Rivers):

Court House: Repairs to windows. Putting the lawn in good order. Laying-out a cloak-room for lawyers. Repairs to the roof, chimney and skylight.

Gaol: Repairing and painting gallery and steps of gaoler's lodgings. Repointing the front steps and painting the entrance yard-door. Installing safety-valves on furnaces. Repairs to a fence. Repairing and painting roof of building as well as roof of shed in the prison yard. Repairs (locks) to iron doors leading to the plumbing service of the various sections of gaol. Repairing a drainage pipe and connecting two wash-basins. General housecleaning and painting inside the gaol. Repairing a section of surrounding masonry wall and repointing defective parts.

VALLEYFIELD (Beauharnois):

Repairs to the plumbing system.

VILLE-MARIE (Témiscamingue):

Improving the grounds and planting a quickset hedge of barberries. Covering pipes with asbestos in two rooms of the gaol's cellar. Renewal of two sets of gratings for large furnaces. Painting floors and stairs of gaol. Installing an iron bar grating opposite the stairs on the ground-floor of gaol. Installing a refrigerator.

- B -

LEGISLATIVE AND PUBLIC BUILDINGS

MONTREAL:

Government offices:

Repairs to the roofs of building on 89 Notre-Dame East and Rougier

streets. Installing hot water in a toilet-room. Alteration work to a front window and installing an electric ventilator. Repairing the elevators. Erecting a balustrade in the offices of the Board of Examiners of Pipe Fitters.

QUEBEC

Agriculture Department Building ("D" building):

Increasing the radiation in an office. Repairs to the elevators. Planting a quickset hedge on the grounds and laying out a granite curb.

Legislature Building:

Installing gratings above the cells in the Provincial Police quarters. Construction of concrete slabs and sidewalks in the inner yard; improving the yard by applying a bituminous pavement and making gutters and drains along the sidewalks; improvement work to the small caves in the yard. Repairing the elevators. Laying-out an office for the Librarian. Installation of a new pump to improve the heating system in the building located on St. Julie street. Making two toilet-rooms; one for ladies and another in the policemen's quarters. Widening the roadway between the Legislature and Library buildings; remaking part of gutters around the basement of the Library; general cleaning and sundry improvements in the Speaker's stationery room; cleaning, enlarging and laying-out the room used for the distribution of bills. Improving the lighting in certain offices of the Revenue and Colonization Departments. Cleaning and repairing the Speaker's apartments. Installing a guard rail at the entrance of the gallery reserved for the public (Legislative Assembly). Erecting an oak partition in the building on St. Julie Street for the laying-out of an anteroom next to the Assistant Attorney General's offices.

New Central Building "E":

The construction of the centre building which started at the close of the Winter 1935 is nearing completion and it may be possible to occupy same at the beginning of the Fall.

In view of the laying-out of offices, a contract was awarded during the year for the fabrication of furniture: desks, tables and chairs.

The commercial lighting was also studied and same should be completed on time for the occupation of the various offices.

It was done likewise for the fabrication and installation of window blinds.

The Greenhouse:

Installing an oil tank for the heating system.

Workmen's Compensation Commission:

Providing ventilation for the waiting room (room for the injured). Enlarging the doctor's office. Changing a stationery room in the basement into a toilet-room.

Quebec Liquor Commission:

Protection work to the front brick wall which had been partly impaired by rain and frost. Specifications are being prepared in view of the necessary repairs.

Provincial Museum:

Replacing the electric feeding cable. Completion of levelling work. Digging of a cellar. Paving the side and front alleys.

Spencer Wood:

Renewing the piping of a toilet-room. Cleaning the dining-room. Cleaning the heater of the domestic hot water system. Installation of French window fastenings in the dining-room. Drainage work on part of the grounds and improvements to the vegetable cellar. Clearing St. Denis Brook between St. Louis road and the culvert on the service route. Construction of a concrete floor with sewer and water intakes in view of the laying-out of a

room for sheltering the workmen. Renewing carpets of two corridors, billiard room and dining-room, and which mostly served to replace the old carpet in the Legislative Assembly.

" C "

S C H O O L S

MONTREAL

Art School:

Painting a few halls and all the windows. Walling a window and completing plastering work in the inside. Improvement work to the front grounds.

Jacques-Cartier Normal School:

Improvement work done to the game of handball. Painting three rooms. Repairing a skylight. Building a wooden floor and repairing the wire fence around the baseball grounds. Putting up an iron fence on the East and West sides of the grounds. Repairs to roof over the Chapel wing and main portion of school. Repairing the electric system and installing lights in various hall and offices.

QUEBEC

Art School:

Painting and sundry repair work as well as laying out apartments for the Director.

Laval Normal School:

Maintenance work; Repairing the plumbing (hot water system). Painting the convent's yard and outer windows; laying oilcloth in two corridors, in the hospital quarters and in two sacristies. Construction of a small annex (Simard Street) adjoining the North West wing of the school, for lodging the Dominican nuns. This two-story wing comprises seven small rooms, a community hall, a parlour, a toilet-room. The walls are of solid masonry with brick outer walls, and the basement of stone and concrete.

" D "

V A R I O U S C O N S T R U C T I O N S

MONTREAL

The Morgue:

Repairs and remaking part of roofing. Sundry alteration and maintenance work to the medico-legal laboratory; housecleaning; repairing the plastering and floors; painting and varnishing.

Laurier Museum at Arthabaska:

Installing window gratings on the first floor as well as eight lighting units.

The Architects Branch,

Sylvia Frappier

Architect and Director of Public Works

Leopold Fontaine

Architect.

CHAPTER III

FIRE PREVENTION

Report of the Fire Commissioner

Quebec, June 30th, 1936.

To the Honourable the Minister of Public Works,

Q u e b e c .

Sir,

I have the honour to submit my annual report in conformity with the Fire Prevention Act (R.S.Q. 1925, chap. 180).

The grants shown in the following table were paid during the year, in virtue of section 11 of the Act, to 50 municipalities which installed a fire protection system or improved the one already existing:

<u>Municipalities</u>	<u>Counties</u>	<u>Grants</u>
Asbestos	Richmond	\$ 13,387.37
Beauharnois	Beauharnois	4,241.20
Bernierville	Mégantic	1,483.00
Bonsecours	L'Islet	2,000.00
Bromptonville	Richmond	504.76
Buckingham	Papineau	4,364.76
Charlemagne	L'Assomption	7,500.00
Chesterville	Arthabaska	2,182.00
Danville	Richmond	150.00
East Broughton	Beauce	816.88
Huntingdon	Huntingdon	2,000.00
Knowlton	Brome	4,361.12
Lachute	Argenteuil	320.48
L'Annonciation (Oka)	Two-Mountains	4,302.84
Louiseville	Maskinonge	330.72
Magog	Stantead	4,100.00
Maniwaki	Gatineau	500.62
Massueville	Richelieu	2,751.76
Mégantic	Frontenac	247.50
Mont-Joli	Matane	500.00
Mont-Royal	Westmount	533.50
Napierville	Napierville	2,000.00
Notre-Dame du Mont-Carmel	Champlain	1,758.65
Richmond	Richmond	3,266.02
Sacré-Coeur de Jésus de Crabtree Mills	Joliette	713.05
Saindon	Matapédia	2,115.81
Sweetsburg	Missisquoi	919.94
St. Adelphe	Champlain	236.06
St. Barthélémy de Dusablé	Berthier	3,500.00
St. Casimir East	Portneuf	315.00
St. Germaine du Lac Etchemin	Dorchester	10,962.82
St. Hilaire	Rouville	219.07
St-Hubert	Rivière du Loup	350.37
St. Jérôme	Terrebonne	5,316.13
St. Joseph de Deschambault	Portneuf	2,500.00
St. Léon de Standon	Dorchester	188.34
St-Marc de Cournoyer,	Verchères	52.00
St. Michel	Yamaska	250.00
St. Patrice de Sherrington	Napierville	1,100.00
St. Philippe de Néri	Kamouraska	2,000.00
St. Philomène de Fortierville		
(St. Françoise Romaine)	Lotbinière	3,437.45

<u>Municipalities</u>	<u>Counties</u>	<u>Grants</u>
St. Robert	Richelieu	3,015.31
St-Romuald d'Etchemin	Lévis	13,000.00
Thurso	Papineau	1,067.24
Upton	Bagot	2,585.28
Vaudreuil	Vaudreuil	266.50
Victoriaville	Arthabaska	8,500.00
Warwick	Arthabaska	1,200.00
Windsor	Richmond	1,587.92
Wottonville	Wolfe	11,400.00
Total		\$ 140,401.47

Special grants were also paid to the 17 municipalities mentioned below where the hose coupling threads were made to conform to the Standard adopted for the Province:

<u>Municipalities</u>	<u>Counties</u>	<u>Grants</u>
Beauharnois	Beauharnois	133.00
Coteau du Lac	Soulanges	105.00
Danville	Richmond	105.35
Knowlton	Brome	147.75
Maniwaki	Gatineau	98.60
Richmond	Richmond	306.93
Sacré-Coeur de Jésus de Crabtree Mills	Joliette	72.00
Sweetsburg	Missisquoi	101.33
St-Charles sur Richelieu	St. Hyacinthe	179.63
St. Coeur de Marie	Lake St. John	174.30
St. Joseph d'Alma	Lake St. John	375.00
St. Marc de Cournoyer	Verchères	23.00
St-Michel	Yamaska	156.50
St. Romuald d'Etchemin	Lévis	590.72
Vaudreuil	Vaudreuil	34.88
Victoriaville	Arthabaska	156.48
Windsor	Richmond	114.18
Total		\$ 2,874.65

As mentioned in my previous report, one of my inspector-instructors busied himself specially, during the course of his inspections, in indicating to the interested parties the fire hazards which he noticed in stores, restaurants and garages in the municipalities which he visited.

The dangers which he has pointed out since he started these inspections may be listed thus:

1. Joists too close to chimneys: 211
2. No metal protection around furnaces in case of overheating: 95
3. No air space behind metal protection sheets: 237
- 4.- Stovepipes too close to ceilings, walls and shelves: 128
5. Stovepipe holes too small: 98
- 6.- Defective chimneys: 28
- 7.- Rubbish poorly placed: 10

In so far as investigations into fires of suspicious origin are concerned, my investigators had considerable work to do, as will be seen


by the cumulative table given below:

YEAR	1926 1927	1927 1928	1928 1929	1929 1930	1930 1931	1931 1932	1932 1933	1933 1934	1934 1935	1935 1936
INQUIRIES ASKED FOR	6	18	29	46	80	173	291	337	502	621
INQUIRIES HELD	6	10	29	42	64	114	217	315	371	518
WITNESSES SWORN	38	104	163	279	488	974	1764	2383	3053	3701
ACCUSATIONS	0	0	1	3	5	11	26	47	66	83
CONVICTIONS	0	0	0	0	3	6	10	22	30	42

Statistics compiled in my office on fire losses in the Province during 1935 show the following figures:

Total property loss	\$ 7,404,965.00
Total loss, covered by insurance	5,602,300.00
Total loss, not covered by insurance	1,802,665.00
Number of fires with a loss of more than \$10,000.00 each	112
Total loss caused by these fires	2,765,533.00
Number of claims reported by Insurance Companies where the loss was under \$25.00	11,849
Total amount of these claims	120,135.73
Number of fires of unknown origin	1,733
Total loss caused by these fires	4,206,947.36
Number of fires reported	6,560
Fatalities caused by fire during the year	68
Number of persons injured by fire during the year	192

Respectfully submitted,


Ernest Lavigne
Fire Commissioner.

CHAPTER IV

RAILWAYS

Report of the Director of Railways

Quebec, June 30th, 1936.

To the Honourable the Minister of Public Works,

Q u e b e c .

Sir,

In my capacity as Director of Railways for the Province of Quebec, I have the honour to submit my eighteenth report, for the period from the 30th of June 1935 to the 30th of June 1936.

In my last report, I mentioned that the Canadian National and Canadian Pacific Railway Companies had applied to the Railway Commission of Canada for permission to suspend the operating of certain branch lines. Decisions have been rendered in the course of the present fiscal year, and I believe it interesting to give some information regarding same:

Canadian National Railways:

1.- Iberville subdivision, between Iberville and St. Hyacinthe, order rendered September 9th, 1935, as follows:

"It is ordered that the abandonment of operation of that portion of the Applicants' Iberville Subdivision, in the Province of Quebec, between Iberville (Mile 21.9) and St. Hyacinthe (mile 50.0), a distance of 28.1 miles, be, and it is hereby, approved; such approval to be without prejudice to the rights or remedies of the parties, if any, in the courts."

2.- Nicolet subdivision, between St. Leonard Junction and Nicolet, order rendered April 18th, 1936, as follows:

"It is ordered that, effective June 15th, 1936, the abandonment of operation of that portion of the Applicants' Nicolet Subdivision, in the Province of Quebec, between St. Leonard Junction (mileage 0.00) and Nicolet (mileage 14.7), a total distance of 14.7 miles, be, and it is hereby, approved; Provided the Applicants furnish adequate train service between Nicolet, Doucet's Landing, and Aston Junction connecting with main line trains at Aston Junction, as well as suitable station and siding facilities to take care of the traffic."

3.- Frelighsburg subdivision, between ~~Farnham~~ and Frelighsburg, order rendered November 4th, 1935, refusing said request.

4.- Iberville subdivision, between St. Hyacinthe and Bellevue Junction, order rendered October 19th, 1935, refusing said request.

5.- Hemmingford subdivision, between St. Remi and Hemmingford, order rendered February 11th, 1936, refusing said request without prejudice, however, to any future application the Applicants may desire to make.

6.- Aston subdivision, between Victoriaville and St. Gregoire, order rendered November 6th, 1935, refusing said request.

7.- Iberville subdivision, between Noyan Junction and Iberville, order rendered November 25th, 1935, as follows:

"It is ordered that the abandonment of operation of that portion of the Applicants' Iberville Subdivision, in the Province of Quebec, between Noyan Junction (Mile 0.0) and Iberville (mile 21.9), a distance of 21.9 miles, be, and it is hereby, approved; such approval to be without prejudice to the rights or remedies of the parties, if any, in the courts."

Canadian Pacific Railway:

1.- Orford Subdivision, between the international boundary and Eastman, order rendered December 31st, 1935, as follows:

"It is ordered that the abandonment of operation of that portion of the Orford Mountain Railway (known as the Orford Subdivision of the Applicant Company) between Mile 0.95 and Mile 16.0, be, and it is hereby, approved; such abandonment to become effective within ninety days from the date of this order; and that the approval herein granted be without prejudice to whatever rights or remedies may be open to the parties in courts of competent jurisdiction."

"That the remainder of the line between Mile 16.0 and Mile 22.8 (Eastman) be maintained in serviceable condition to take care of car loadings as and when required."

The information on the subsidies of all kinds granted or paid to the various railway companies will be found in the following tables of the report for 1928 and previous reports, namely:

Table "A" for the balance available at the Department on the amounts received from the Treasury Department. This table has not been changed and is complete.

Table "B": a) for the money granted to certain companies;
b) for the amounts paid to the 30th of June, 1928;
c) for the amounts remaining to be paid to date;
d) for the subsidies that have lapsed, etc.

The only change in this report is mentioned in the annual report for 1932.

Table "C": a) for land subsidies granted to certain companies;
b) for the amounts paid to the 30th of June, 1928;
c) for the amounts remaining to be paid at the latter date.
d) for the subsidies that have lapsed, etc.

This table has not been changed and as published in the report for the year 1928 is complete to the 30th of June, 1936.

Table "D", for the land subsidies, non convertible into money, earned by the various railway companies to the 30th of June, 1928, on the subsidies granted by the acts 4 Ed. VII, ch. 2, sec. 1; 6 Ed. VII, ch. 4, sec. 1; 8 Ed. VII, ch. 5, sec. 1; 1 Geo. V. ch. 2, sec. 1.

This table has not been changed and is complete as published in the report for the year 1928.

Table "E": a) for land subsidies, non convertible into money, granted to certain companies;

b) for the subsidies earned to the 30th of June 1928;

c) for the subsidies remaining to be earned at the latter date;

d) for the subsidies that have lapsed, etc.

This table has not been changed and is complete to date, as published in 1928.

Table "F" reproduced herewith, gives the length of railroad lines in miles constructed and in operation, or ready to be put into operation on the 31st December, 1935.

Respectfully submitted,



Ivan E. Vallee

Director of Railways.

TABLE "F"

LENGTH OF RAILWAYS BUILT OR IN OPERATION OR READY TO BE OPENED TO TRAFFIC IN
THE PROVINCE OF QUEBEC, TO 30th OF DECEMBER, 1935.

A) CANADIAN NATIONAL RAILWAYS:

	Distance in miles	Sub. total miles	Total miles	Grand total miles
1.- Canadian Government Railways:				
Intercolonial R'y. From interprovincial boundary near Matapedia to Pointe Levis	292.65			
Hadlow to Charny	5.77			
St. Charles to West Jct.	16.73			
Joffre to Junction with N.T.R. at mile 1.46 Bridge subdivision	1.42			
Chaudiere to Ste. Rosalie Jct.	115.96			
St. Leonard Junction to Nicolet	<u>14.70</u>	447.23		
Lotbinière & Megantic				
Villeroy to Parisville	13.12			
Parisville to Deschaillons 3.54 mls. Operation discontinued	-----	13.12		
National Transcontinental Ry				
From interprovincial boundary near Courchesne to Diamond Jct.	199.03			
Junction with Intercolonial R'y at mile 1.46 Bridge Subdivision to Cadorna via Bridge and Cap Rouge	9.79			
Connection to C.N.Q.R. at Allenby Jct	0.11			
Cap Rouge to interprovincial boundary near La Reine	493.31			
Dombourg to Junction with C.N.Q.Ry near Donnacona	5.32			
Y at Cap Rouge	0.18			
Taschereau to mile 1.07 Rouyn subdivision	<u>1.07</u>	708.81		
Quebec & Saguenay Ry. St. Joachim to Cap Tourmente (leased from Q.R.L. & P. Co.)	5.08			
Cap Tourmente to Nairn Falls	61.71	66.79		

TABLE "F" (continued)

		Distance in miles	Sub total miles	Total miles	Grand total Miles
National Transcontinen- tal Branch Lines Co.	(Leased to Can.-Govt Rys) Mile 1.07 Rouyn sub. near Taschereau to Noranda	42.83	42.83		
	Total Can. Govt. Rys			1,278.78	
2.- CANADIAN NATIONAL RY:					
Canadian National R'y	Mile 66.82 Montfort sub. to Lac Remi	2.40			
	La Dore to Dolbeau	25.31			
	Oka Jct. to Calumet Road	<u>4.45</u>	32.16		
Grand Trunk R'y.	From international boundary, west of Norton to St. Henri East Jct.	129.76			
	Pointe Levis to Hadlow	0.95			
	Cherny to Richmond	88.71			
	Victoriaville to Doucet's Landing	35.34			
	West leg of Y at St. Henri	0.34			
	Bonaventure Station, Montreal, to interprovincial bound- ary at River Beaudette	45.09			
	Connection to C.P.R. at Dorval	0.24			
	Brosseau to international boundary at Fort Covington	61.56			
	St. Lambert to international boundary at Rouse's Point	40.18			
	Connection with C.V. Ry at St. John's	0.03			
	Hemmingford to St. Isidore Jct	21.29			
	Y at Cantic	0.24			
	Y at Ayrness	0.22			
	Turcot to Jacques Cartier Junction	10.77			
	Y at Eastern Junction	0.24			
	From international boundary near East Alburgh to inter- provincial boundary west of St. Justine (formerly Canada Atlantic Ry)	66.48			
	Ste. Martine Jct to Beauharnois (former Beauharnois Jct. Ry)	<u>5.90</u>	507.34		
Quebec Oriental R'y.	Formerly Atlantic and Lake Superior R'y) Matapedia to Paspebiac West	<u>100.09</u>	100.09		
Atlantic, Quebec & West- ern R'y.	Paspebiac to Gaspé	<u>102.16</u>	102.16		

TABLE "F" (continued)

		Distance in miles	Sub total miles	Total miles	Grand total miles
Quebec, Montreal & Southern R'y.	Fortierville to Pierreville	48.33			
	Y at St. Gregoire	0.28			
	Pierreville to St. Lambert (formerly South Shore Ry)	61.41			
	Bellevue Jct. to St. Hyacinthe (formerly United Counties R'y)	<u>31.10</u>	141.12		
Stantead, Shefford & Chambly RR.	(leased to Can. Nat. R'y) S.S. & C. Jct. to Waterloo	39.84			
	St. Charles St. to Clough Jct. Granby (see Montreal & Southern Counties Ry)				
	Granby loop (see Montreal & Southern Counties Ry)		39.84		
Montreal & Province Line R'y	(leased to Can. Nat. Ry.)				
	M. & S.C. Jct to St. Cesaire.- (see Montreal & Southern Counties R'y)				
	St. Angele to Marieville.- (See Montreal & Southern Counties R'y)				
	Farnham to Frelighsburg	<u>18.22</u>	18.22		
Total Can. Nat. R'y				940.93	
3.- CANADIAN NORTHERN R'Y:					
Quebec & Lake St. John R'y.	Quebec to Chicoutimi	227.25			
	Chambord to Roberval	13.32			
	Hotel Jct. to Lake Beach	0.62			
	Y at Hotel Jct.	<u>0.14</u>	241.33		
James Bay & Eastern R'y.	Roberval to La Dore	18.75	18.75		
St. Charles & Huron Riv. R'y.	Loretteville to Stoneham	9.95	9.95		
Canadian Northern Quebec R'y.	Limoilou to Jct with N.T.R. at Allenby	4.90			
	Morency Jct. to Mont. Mills	7.05			
	Junction with N.T.R. near Donnacona to St. Marc	18.26			
	St. Prosper to Garneau	17.98			
	Grand'Mere to mile 91.66 Grand'Mere subd.	7.79			
	Fresniere to Papineau	12.66			
	St. Jacques to Rawdon	9.00			

TABLE "F" (continued)

		Distance in miles	Sub total miles	Total miles	Grand total miles
Canadian Northern Quebec R'y	Rinfret to mile 28.40 Montfort Subdivision near St. Sauveur	14.95			
	Y at Joliette	0.43			
	Y at Rinfret Jct	0.28			
	Intervale to mile 66.82 Montfort Subdivision	9.06			
	Grenville to interprovincial boundary	<u>0.21</u>	102.57		
Chateauguay & North- ern R'y.	Joliette to Montreal	36.21			
	Paradis to St. Jacques	<u>6.77</u>	42.98		
Great Northern R'y	Rivière à Pierre to the junction between former Great Northern Ry and Lower Laurentian Ry n'r Herouxville (formerly Lower Laurentian R'y)	34.88			
	Junction between former Great Northern R'y and Lower Laurentian R'y near Herouxville to Garneau	5.31			
	Garneau to Grand'Mere	3.76			
	Mile 91.66 Grand'Mere subdivision to Joliette	49.79			
	Joliette to Cushing Jct.	61.58			
	Mile 28.40 Montfort Subd. near St. Sauveur to Huber- deau (formerly Montfort Colon. RBy)	<u>30.25</u>	185.57		
Mount Royal Tunnel & Terminal Co.	Montreal Tunnel Terminal Sta. to Junction with Can. Nor. Ont. Ry. at mile 5.82 Mount Royal Subdivision		5.82		
Canadian Northern Ontario Ry.	Junction with Mount Royal Tunnel & Terminal Co's Ry at mile 5.82 Mount Royal Subd. to Cartierville	2.38			
	Val Royal at Grenville	46.21			
	Interprovincial boundary at Fitzroy to interprovin- cial boundary at Portage du Fort	<u>22.30</u>	70.89		

Total Can. Nor. Ry 677.86

Grand Total Can. National Rys..... 2,897.57

4.- CENTRAL VERMONT RY. (Controlled by Canadian National Ry and operated as a separate concern).

Montreal & Vermont Jct. Ry.	St. John's to international boundary	25.33			
	Total				25.33

TABLE "F" (continued)

		Distance in miles	Sub total miles	Total miles	Grand total miles
5.- MONTREAL & SOUTHERN COUNTIES RY: (Electric and controlled by Canadian National Ry and operated as a separate concern)					
Montreal & Southern Coun- ties Ry.	Montreal McGill St. to Grey Nuns St.	0.06			
	McGill St. to west end Victoria bridge	1.41			
	Victoria Bridge	1.33			
	East end of Victoria Bridge to St. Helen St. Mont- real South	2.51			
	East End Jct. St. Lambert to M. & S.C. Jct.	3.25			
	St. Cesaire to St. Charles St. Granby	<u>15.33</u>	23.89		
Stantead Shefford & Chambly RR.	(Sub-leased from Can. Nat. Ry.)				
	St. Charles St. Granby, to Clough Jct, Granby	0.33			
	Granby Loop	<u>0.13</u>	0.46		
Montreal & Province Line Ry	(Sub-leased from Can. Nat. Ry)				
	M. & S.C. Jct. to St. Cesaire	25.21			
	Marieville to St. Angele	<u>3.49</u>	<u>28.70</u>		
Total of M. & S.C. Railway					53.05 (1)
(1) Note: This mileage is included in the Electric Systems.					
B) CANADIAN PACIFIC RAILWAY SYSTEM (C.P.R.)					
1.- Atlantic & North Western Ry.	From St. Lawrence River to Farnham	35.29			
	Brookport to Lennoxville	<u>60.09</u>	95.38		
INTERNATIONAL RY:					
	From Lennoxville to the Maine border		80.95	176.33	
2.- Montreal & Atlantic Ry (formerly South Eastern Ry):					
	From the international boundary, near Abercorn, to Farnham-West	32.57			
	From the international boundary, near Missisquoi, to international boundary at North Troy	10.68			
	From Enlaugra to Drummondville	<u>59.21</u>	102.46		
ST LAWRENCE & LAKE CHAMPLAIN JCT. RY:					
	Stanbridge to St. Guillaume		60.57	163.03	

TABLE "F" (continued)

	Distance in miles	Sub total miles	Total miles	Grand total miles
3.- Joliette & Brandon Ry (formerly Montreal & Lake Maskinonge): From the Jct of C.P.R. at St.Felix de Valois to St. Gabriel de Brandon			11.15	
4.- Quebec, Montreal, Ottawa & Occidental. From Montreal (Place Viger) to the interprovincial boundary near Broad St. Ottawa	119.20			
St. Jerome Branch (Ste Thérèse to St.Jerome)	13.27			
Buckingham Branch (Buckingham Jct. to Buckingham village)	<u>4.30</u>		136.77	
5.- Laurentian Ry St. Lin branch (St.Lin Jct to St. Lin)			15.17	
6.- St. Eustache Ry St.Eustache branch (Ste Thérèse to St-Eustache)			6.02	
7.- North Shore Ry Quebec to St. Martin Jct.	159.76			
Extension to deep water embankment Quebec 0.84 miles				
Berthier Branch (Berthier to Berthierville)	2.08			
Piles Branch (Cap de la Madeleine to Grandes Piles)	27.03			
Joliette Branch (Lanoraie to St Félix de Valois)	<u>16.65</u>		205.52	
8.- Ontario & Quebec Ry. Windsor station to the Ontario boundary	46.68			
Mile End Switch to St. Lawrence River (including bridge)	8.92			
Ballantyne to St. Luc Jct.	2.15			
Highlands to South Bank Branch terminus	6.03			
Lasalle Loop at Highlands to Power Jct. on South Bank Branch	4.45			
Brealsy to Outremont	1.29			
Montreal West to North Jct.	1.08			
Montreal West to South Jct.	<u>0.96</u>		71.56	
9.- Montreal & Ottawa (formerly Vaudreuil & Prescott): Vaudreuil to interprovincial boundary	21.65			
Mando to Pointe Fortune	<u>6.80</u>		28.45	
10.- Orford Mountain Ry. Windsor Mills to the border near Elkhurst			57.89	
11.- Ottawa, Northern & Western Ry: OTTAWA & GATINEAU VALLEY RY: Hull to Maniwaki village	80.85			

TABLE "F" (continued)

		Distance in miles	Sub total miles	Total miles	Grand total miles
	PONTIAC & PACIFIC JCT. RY: Hull to Waltham	<u>77.87</u>		158.72	
12.-	Montreal & Western Ry: St. Jerome to Labelle			66.93	
13.-	Glengarry & Stormont Ry: Soulanges to Interprovincial boundary			4.72	
14.-	Lake Temiscamingue Colonization Ry: From interprovincial boundary at Mattawa to Kipawa Grimmer to Temiskaming Wharf	44.79 <u>1.54</u>		46.33	
15.-	Interprovincial & James Bay Ry: From Gendreau to Angliers Ville-Marie branch (Gaboury to Ville-Marie)	69.05 <u>7.65</u>		76.70	
16.-	Cap de la Madeleine Ry: From Jct of C.P.R. at Cap de la Madeleine, to village of Cap de la Madeleine (Exclusive of Wayagamack branch, 1.85 miles on Belle Rive Island)			2.44	
17.-	Le Chemin de fer de Colonisation du Nord: Labelle to Mont-Laurier			58.17	
18.-	St. Maurice Valley Ry Three Rivers to Grand'Mere			27.27	
19.-	Canadian Pacific Ry. Staynerville to Staynerville Quarries Three Rivers Loop Wolfe's Cove branch (Cadorna to Wolfe's Cove Wharf)	3.85 3.28 <u>1.51</u>		8.64	
20.-	Hereford Ry. Cookshire to Malvina			22.96	
21.-	Quebec Central Ry (operated under lease by the Canadian Pacific Railway Co.) Main line (Sherbrooke to Diamond Junction) Megantic Branch (Tring Jct. to Megantic) Chaudiere Branch (Valley Jct. to Lac Frontiere) Levis Branch (Scott Jct. to Harlaka Jct. on C.N.R.)	129.63 59.20 79.14 <u>27.49</u>	295.46		

TABLE "F" (continued)

	Distance in miles	Sub total miles	Total miles	Grand total miles
BOSTON & MAINE RAILROAD; MASSAWIPPI VALLEY RY: (Leased since 1st June 1926 to Quebec Central Ry and operated by this company) (Passumpsic Division) From Jct with Grand Trunk (C.N.R.) at Lennoxville to international boundary near Beebe Jct. Stantead Branch (Beebe Jct. to Stantead)				
	31.96 <u>4.08</u>	<u>36.04</u>	<u>331.50</u>	
C.- NAPIERVILLE JCT. RY	Grand total C.P.R.			1,676.27
	From border line at Rouse's Point N.Y. to Delson Jct.			27.15
D.- CANADA & GULF TERMINAL RY (former Matane & Gaspé):				
Mont-Joli to Matane	35.80			
Matane to Hammermill (extension)	<u>2.30</u>			38.10
E.- TEMISCOUATA RY.:				
				69.28
	Riviere du Loup to the New Brunswick boundary			
F.- NEW YORK CENTRAL; ST. LAWRENCE & ADIRONDACK RY:				
From Jct with Canada Atlantic (C.N.R. near Valleyfield to the border line in the direction of Malone N.Y. Valleyfield to Adirondack Jct.	20.05 <u>26.52</u>			46.57
G.- WALLACE SANDSTONE QUARRIES LTD (Philipsburg Junction & Quarries Railway)				
From Jct. with Central Vermont at Stanbridge to Philipsburg				7.00
H.- GULF PULP & PAPER COMPANY:				
(Formerly North Shore Power Railway & Navigation Co.) From Baie des Sept Iles to Clarke City				9.00
I.- THE ROBERVAL AND SAGUENAY RAILWAY COMPANY (Old Ha!Ha!Bay Railway):				
Passenger Sta. Arvida to Port Alfred (main line)	20.27			
Deschene River to Racine (extension)	3.47			
Passenger Station Arvida to Kenogami (extension)	3.2			
LaBrosse Junction to Chicoutimi le Bassin (branch)				
3.3 miles operation discontinued.				
Laterrière Jct. to Laterrière (branch)				
6.6 miles operation discontinued.				
Laterrière to Portage des Roches (branch)				
5.4 miles operation discontinued.				


TABLE "F" (continued)

		Distance in miles	Sub total miles	Total miles	Grand total miles
	Port Alfred to St. Alexis Grande Baie (branch)	1.2			
	Port Alfred to Bagotville (branch)	<u>.9</u>			29.04
J.- ALMA & JONQUIERE RY.	From the Saguenay Power Jct. with C.N.R. near Hébert- ville to Ile Maligne				10.30
K.- NIPISSING CENTRAL RY (T. & N.O.):	From Ontario Boundary road to Noranda				26.67
L.- ASBESTOS & DANVILLE RY.	From Danville to Asbestos (4.6 miles) operated as factory branch.				
M.- PONTIAC & RENFREW RAILWAY	From Wiman on the Pontiac & Pacific Jct. Railway to the Bristol Company's mines (5 miles) line aban- doned, rails removed.				
N.- OTTAWA VALLEY RAILWAY	Lachute to St. André (6.74 miles) line abandoned.				
O.- CARILLON & GRENVILLE RAILWAY	Carillon to Grenville (12.75) line abandoned.				
P.- NEW ROCKLAND SLATE CO. RAILWAY:	From the Jct with Grand Trunk to the New Rockland quarries (4.12 miles) line abandoned.				
Q.- HEREFORD RAILWAY:	Formerly operated by Maine Central Ry, purchased by C.P.R. Cookshire to Malvina 22.48 miles operated by C.P.R. Malvina to Cummings Mills (11.85 miles) rails removed and right of way for sale. Cookshire to Brookbury (about 10 miles) rails removed road sold by Bury Township. Brookbury to Dudswell (about 4 miles) leased to a lumber merchant. Dudswell to Lime Ridge (about 3.85 miles) leased for industrial operation.				
Grand Total steam railways					<hr/> 4,862.28

TABLE "F" (continued)

	Distance in miles	Sub total miles	Total miles	Grand total miles
ELECTRIC RAILWAYS:				
a) Montreal & Southern Counties Railway (controlled and operated by C.N.R.)			53.05	
b) Quebec Ry Light & Power Co.				
Montmorency Division: (former Quebec, Montmorency & Charlevoix)				
Quebec to St-Joachim	30.83			
Steam trains are also run on this division.				
Quebec Division:				
Tramway lines within the limits of the City of Quebec	28.15			
Tramway lines within the limits of the county of Quebec	<u>9.99</u>		68.97	
c) Montreal Tramways Co.				
Main line, single track		289.539		
Siding	4.412 miles			
Branches	2,327			
Car barns	<u>22.869</u>	<u>29,608</u>	319.147	
d) Levis Tramway Co. (formerly Levis County)			11.50	
e) Shawinigan Falls Terminal:				
Main line owned .3608 Right of way 3.0249	3.3857			
Sidings owned 1.3565 Right of way 7.0237	<u>8.3802</u>		11.7659	
f) Three Rivers Traction Co. (7.65) line abandoned.				
g) The Hull Electric Co. (Interprovincial Boundary to Aylmer 12 miles acquired by the International Paper Company).			13.61	
h) Sherbrooke Ry & Power Co. (11.286) line abandoned.				
Total for electric railways				478.0429
Grand total for all railways				5,340.3229

Department of Public Works,
Quebec, June 30th, 1936.


Ivan E. Vallée
Director of Railways.

CHAPTER V
TOLL BRIDGES AND ROADS
Report of the Director

Quebec, June 30th, 1936.

To the Honourable the Minister of Public Works,
Q u e b e c .

Sir,

I have the honour to submit my annual report as Director of toll bridges and turnpike roads, for the year 1935-36.

ABOLITION OF TOLLS

Allow me, as in previous years, to refer you to my preceding reports and particularly to that of 1925, where I gave all the required information concerning toll bridges and turnpike roads on which tolls have been abolished to date.

I must add that no turnpike roads exist in the Province.

TOLL BRIDGES

The Province of Quebec is actually operating ten of the toll bridges existing in this Province, nine of which being its property. They are:

Taschereau bridge between Vaudreuil and Perrot Island;
Galipeault bridge between Ste. Anne de Bellevue and Perrot Island;
Batiscan bridge, at Batiscan, on the Quebec-Montreal highway;
Yamaska bridge, between Yamaska-East and Yamaska-West;
David Laperrière bridge, between St. François du Lac and Pierreville;
Turcotte bridge, between Sorel and St. Joseph de Sorel;
Chicoutimi bridge, between Ste. Anne and Chicoutimi;
Island of Orleans bridge, between Montmorency Village and Island of Orleans;
Mgr Ross bridge, between Gaspé Village and Gaspé Harbour;
Quebec bridge (belongs to the Dominion Government and a vehicular roadway has been built thereon under a contract between the Dominion and the Quebec governments).

TOLL ON BRIDGES

The tolls on the bridges operated by the Province were established by acts passed by the Legislature. I believe it interesting to give an extract of the present tarif on each of these bridges.

Batiscan bridge
(tariff)

Automobiles and autobusses	\$ 0.50
Trucks or tractors	0.50
Trailers	0.10
Motorcycles, with side-car	0.15
Motorcycles, without side-car	0.10

Ten trip booklets for \$2.50 and 50 trip booklets for \$7.50 are sold to owners of passenger automobiles, trucks or tractors.

All owners of passenger automobiles have the privilege of a free return trip, if made the same day.

Quebec and Island of Orleans bridges
(tariff)

Motorcycles, without side-car	\$ 0.10
Motorcycles, with side-car	0.15
Automobiles	0.50
Trailers, except those hauled by a vehicle belonging to a farmer ..	0.25
Trucks of 2 tons or less	0.50
Trucks having F.M. Quebec license	0.50
Trucks of more than 2 tons, towing cars and tractors	0.60
Autobusses for less than 16 passengers	0.50
Autobusses for over 16 passengers	0.60

Ten trip booklets for \$2.50 are sold to owners of passenger automobiles, trucks of two tons and less, trucks having F.M. Quebec license and autobusses for less than 16 passengers.

The privilege of a free return trip, if made the same day, is granted to passenger automobiles, motorcycles, trucks having F.M. Quebec license and autobusses with a capacity not exceeding sixteen passengers.

Taschereau, Galipeault, Yamaska, Turcotte
and David Laperrière bridges
(tariff)

Tolls on these five bridges are the same. In consequence, I am giving the tariff in force on these five bridges.

Automobiles	\$ 0.25
Tractors	0.20
Motorcycles	0.15
Autobusses	0.60

TRUCKS:

Capacity of 1 ton or less	0.25
Capacity of more than one ton and less than 2 tons	0.40
Capacity of more than 2 tons and less than 4 tons	0.60
Capacity of more than 4 tons and less than 5 tons	0.90

TRAILERS:

Capacity of 1 ton or less	0.20
Capacity of more than 1 ton and less than 2 tons	0.30
Capacity of more than 2 tons and less than 4 tons	0.45
Capacity of more than 4 tons and less than 5 tons	0.70

Ten trip booklets for \$2.00 and 20 trip booklets for \$3.00 are sold to owners of passenger automobiles. These tickets are good on any of these bridges.

Similar trip cards, at fixed price and for the same number of trips, are also issued to owners of trucks not exceeding two ton capacity and having a Quebec license.

Chicoutimi bridge
(tariff)

Automobiles	\$ 0.50
Autobusses	0.60

TRUCKS:

Capacity of 2 tons or less	0.50
From 2 to 4 ton capacity	0.70
4 and not over 5 ton capacity	0.90

TRAILERS:

Capacity of 2 tons or less	0.30
Over 2 and not over 4 ton capacity	0.50
Over 4 and not over 5 ton capacity	0.70

Twenty trip booklets for \$7.00 and 50 trip booklets for \$12.50 are sold to owners of automobiles or trucks of not over 2 tons.

Monseigneur Ross bridge at Gaspé
(tariff)

7 Passenger automobiles, including driver, 1 trip	\$ 0.25
Passenger	0.05
Motorcycles, 1 trip	0.15
Autobusses used to convey passengers including driver	0.50
and for every passenger	0.05
Trucks temporarily or permanently altered for conveyance of 7 or more passengers, including driver	0.50
and for each passenger	0.05

TRUCKS:

1 ton or less, 1 trip	0.25
2 tons or less, 1 trip	0.40
4 " " " 1 "	0.60
5 " " " 1 "	0.90
6 " " " 1 "	1.00
7 " " " 1 "	1.25
Over 7 tons, 1 trip	1.50
Any other vehicle not specially included in this tariff, 1 trip	0.25

TRAILERS:

1 ton or less, 1 trip	0.25
2 tons or less, 1 trip	0.40
4 " " " 1 "	0.50
5 " " " 1 "	0.75

ANIMAL DRAWN VEHICLES:

One horse vehicle, 1 trip	0.25
2 horse vehicle, 1 trip	0.40
Riders, 1 trip	0.25

UNHARNESSED ANIMALS:

Horses and mules (per head) 1 trip	0.15
Cattle generally, 1 trip (per head)	0.10

Sheep)	
Calves) (per head), 1 trip	0.03
Pigs)	

Vehicles drawn by dog or goat, etc.	0.15
--	------

Pedestrians or passengers (1 trip)	0.05
--	------

Children attending Catholic or Protestant schools pass free if provided with a certificate from their teacher.

Residents of the village of Gaspé and of the place called Gaspé Harbour, having to cross the bridge to attend obligatory religious services, are also exempt from toll.

A special booklet of 50 trips for \$5.00 for passenger automobiles is also sold to residents of the village of Gaspé and of the place called Gaspé Harbour, as well as a strip of tickets for pedestrians and passengers at the price of eight tickets for \$0.25.

A \$1.00 ticket is also issued in favour of the public travelling from Quebec to Montreal and vice versa, via south shore, good on the four bridges Quebec, David Laperrière, Yamaska and Turcotte, or a \$0.75 ticket good on three of these bridge, at the traveller's choice.

Fifty trip booklets for \$5.00 are sold for passenger automobiles, good on all toll bridges operated by the Province, except Mgr Ross bridge, at Gaspé. Such ticket do not entitle to a free return trip the same day, as do

certain tickets sold on bridges where this privilege is granted.

Autobus owners can also benefit of a reduced rate by obtaining the hundred trip booklet for \$45.00, good on all the bridges operated by the Province and for autobusses of any capacity.

GENERAL REMARKS

Tolls were collected throughout the year on the Quebec, Island of Orleans, Taschereau, Galipeault, Chicoutimi, Mgr Ross and Turcotte bridges. On the other bridges, the collection was interrupted during the following period: Batiscan bridge, from January 2nd, 1936, to March 24th, 1936; Yamaska bridge, from January 9th, 1936, to March 25th, 1936; David Laperrière bridge from January 7th, 1936, to March 27th, 1936.

OTHER TOLL BRIDGES

Besides the bridges belonging to the Government, there are a few toll bridges in the Province belonging to private corporations. We mention only those in which the government is interested and on which the tolls are subject to the approval of the Lieutenant-Governor in Council.

JACQUES CARTIER BRIDGE

This bridge connecting the City of Montreal with south shore of the St. Lawrence River, at Longueuil, belongs to the Montreal Harbour Commissioners, and the Quebec Government contributes towards payment of the annual deficit.

GRAND'MERE BRIDGE

This bridge is the property of the Corporation of the City of Grand-Mere and the Government contributes towards payment of annual deficits.

HONORE MERCIER BRIDGE

This bridge, erected over the St. Lawrence, between Ville Lasalle and Caughnawaga, is administered by the Corporation du Pont du Lac St-Louis, and the Quebec Government guarantees payment of the annual deficits.

NAVIGATION

For navigation purposes, some toll bridges of the Government of the Province have movable spans. During the season of navigation 1935, these were opened for the passage of boats, as follows:

	Opened for		Number of openings	
			Day	Night
	First time	Last time	7 a.m. to 7 p.m.	7 p.m. to 7 a.m.
Batiscan bridge	0	0
Turcotte Bridge, Sorel	Apr. 9, 1935	Dec. 8, 1935	226	94
Yamaska bridge	0	0
Chicoutimi bridge	May 4, 1935	Nov. 28, 1935	197	31
Mgr Ross bridge, Gaspe	Apr. 30, 1935	Dec. 19, 1935	848	265

Respectfully submitted,

Ivan E. Vallée

Director of Toll Bridges and Roads.

CHAPTER VII
REVENUES AND EXPENSES

Accountant's Report

Statement of Revenues from 1st July, 1935, to 30th June, 1936.

REVENUES

Taxes and Licenses:

Fire Prevention Act, R.S.Q., 1925, c. 180: $\frac{1}{4}$ of 1%	
of fire insurance premiums	\$ 28,396.81

Toll Bridges (operating cost deducted):

Batiscan	\$ 48,893.67	
Taschereau	67,955.93	
Quebec	16,363.61	
Galipeault	78,275.69	
St. François	1,934.99	
Yamaska	3,359.07	
Sorel	6,272.11	
Chicoutimi	2,720.55	
Gaspé	5,640.20	
Ile d'Orleans	7,573.99	238,989.81

Interest:

Bell Telephone Company (re balance sale price of immoveable, Belmont Street, Montreal...	6,925.00
---	----------

Sale of Material, etc.:

Sundry	1,167.53
--------------	----------

Rents:

Real Estate, Conroy and St. Amable Sts, Quebec	465.00
--	--------

Chateau Frontenac, Quebec:

Rent of ground to Chateau Frontenac Company from January 1st 1935 to January 1st 1936	760.60
--	--------

Montreal Tramways Company:

Right of way on Bordeaux Gaol farm from Sep- tember 15th, 1935, to September 15th, 1936.	100.00
---	--------

Bell Telephone Company:

Pole rights on Bordeaux Gaol Farm from Novem- ber 7th, 1934 to November 7th, 1935.....	55.00
---	-------

Bell Telephone Company:

Rent for attaching cable to Montmorency bridge from December 1st 1935 to November 30th 1936	1.00
--	------

Bell Telephone Company:

Rent for sub-marine cable to Batiscan bridge from 1st January 1936 to 31st December 1936	10.00
---	-------

Bell Telephone Company:

Rent for attaching cable to bridge over St. Francis river, between village of St. Fran- cois du Lac and Pierreville, from 1st January 1936 to 31st December 1936	10.00
---	-------

Bell Telephone Company:

Rent for attaching cable to bridge over Gati- neau river, between Pointe Gatineau and Hull, from January 1st to December 31st, 1936	1.00
---	------

(Statement of Revenues from 1st of July, 1935, to 30th June 1936)

Compagnie de Téléphone de Yamaska:

Rent for cable attachment to river St. Francis
bridge, between St. François du Lac and Pier-
reville, to 2nd January 1936 10.00

City of Montreal:

Rent of ground between Court House and City
Hall, opposite Nelson Monument, to 30th of
June 1935 1.00

City of St. Hyacinthe:

Rent of ground near Court House to 1st May 1935 1.00

Quebec Lawn Tennis Club:

Rent of ground near St. Louis Gate to June 30th,
1935 1.00

P. J. A. Cardin:

Right of way near Court House, at Sorel, to 1st
of May, 1936 45.00 1,460.60


Divers:

Refunds, etc..... 2,786.41

Total \$ 279,726.16

Department of Public Works,

Quebec, June 30th, 1936.


J. A. Taillon,
Accountant.

Statement of Expenditures from 1st July, 1935, to 30th June, 1936.

BUDGET EXPENDITURES

Maintenance of Public Buildings:

Maintenance of Legislative and Departmental Buildings	381,746.27	
Spencer Wood	76,258.05	
Parliament Green Houses	39,780.15	
Cafe, Parliament Building	8,288.78	
Provincial Museum, Quebec	29,758.27	
Agricultural Building	30,292.84	
Workmen's Compensation Commission Building, Quebec	223.64	
Domestic Arts School, Quebec	282.73	
Fine Arts School, Quebec	1,611.72	
Fine Arts School, Montreal	1,753.55	\$ 569,996.00
Cleaning	104,337.09	
Insurance of public buildings generally	23,998.34	
Water rates on government buildings	18,693.37	
Inspections and explorations	31,421.78	
Post Office, Parliament Building, Quebec....	5,233.15	
Repairs and maintenance of Normal Schools...	15,063.01	
Highway bridges	612,641.03	
Maintenance of Government offices, Montreal	48,245.15	
Fire Protection Act	171,809.35	
Abolition of toll gates, City of Three Rivers (5 Geo. V, ch. 10).....	4,583.33	1,036,025.60
Toll bridges, maintenance		16,425.85

Court Houses and Gaols, maintenance and repairs:

<u>District</u>	<u>County Seat</u>		
Abitibi	Amos	2,804.32	
Arthabaska	Arthabaska	616.77	
Beauce	St. Joseph	1,076.42	
Pontiac	Campbell's Bay	1,904.50	
Chicoutimi	Chicoutimi	569.95	
Hull	Hull	1,067.87	
Joliette	Joliette	1,324.09	
Saguenay	La Malbaie	13,532.40	
Montcalm	Mont-Laurier	1,238.55	
Montmagny	Montmagny	2,080.05	
Montreal	Montreal Court House	21,191.38	
Montreal	Montreal, Morgue	2,911.34	
Gaspé	New Carlisle	1,428.38	
Nicolet	Nicolet	1,209.27	
Gaspé	Perce	89.93	
Quebec	Quebec, Court House	16,170.74	
Rimouski	Rimouski	678.00	
Kamouraska	Rivière du Loup	2,939.14	
Roberval	Roberval	1,174.38	
St. François	Sherbrooke, Court House	1,581.44	
Richelieu	Sorel	219.30	
Bedford	Sweetsburg	431.34	
Gaspé	Ste. Anne des Monts	75.13	
St. Hyacinthe	St. Hyacinthe	244.30	
Iberville	St. John	40.00	
Terrebonne	St. Jerome	532.43	
Terrebonne	Ste. Scholastique	120.20	
Trois-Rivières	Trois-Rivières, Court House	4,154.35	
Beauharnois	Valleyfield	22.95	
Pontiac	Ville-Marie	2,430.60	
Montreal Gaol		6,572.80	
Quebec Gaol (men)		7,703.91	
Quebec Gaol (women)		5,270.98	
Trois-Rivières Gaol		791.70	104,198.91
Court Houses and Gaols, insurance			30,958.40

TOTAL 1,757,604.76

Statement of Expenditures from 1st July, 1935, to 30th June, 1936.

STATUTORY EXPENDITURES

Subsidies re:-

Montreal-Longueuil bridge	\$150,000.00	
Bridge at Grand'Mere, St. Maurice river	6,920.12	
Bridge at Caughnawaga	<u>118,289.64</u>	\$ 275,209.76

Construction:-

Large bridges		319,206.79
---------------------	--	------------

Furnishing:-

Quebec Court House	3,435.08	
Provincial Museum, Quebec	<u>1,210.00</u>	4,645.08

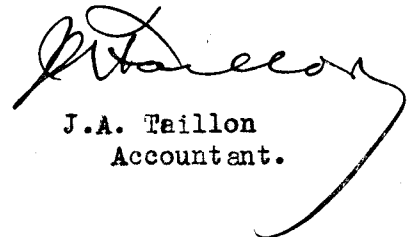
Property of the Workmen's Compensation Commission:-

Interest	866.33	
Sinking-fund	<u>864.07</u>	<u>1,730.40</u>

Total		\$ 600,792.03
-------------	--	---------------

Department of Public Works,

Quebec, June 30th, 1936.


J.A. Taillon
Accountant.

INSURANCE OF PUBLIC BUILDINGS IN GENERAL

Names of buildings	On buildings	On furniture or contents	On dependen- cies or contents	Total	Expiration of policy
In Montreal:					
The property known as Government Offices, in the square between Notre-Dame, St. Gabriel and St. James Streets	291,600.00	42,400.00		334,000.00	May 1st 1939
Jacques Cartier Normal School including new buildings and dependencies	91,000.00	19,500.00	2,000.00	112,500.00	" " "
Morgue	50,000.00	20,000.00		70,000.00	" " "
St. Hyacinthe:					
Dairy School	60,000.00	50,000.00	14,900.00	124,900.00	" " "
Dairy School (Farmer's house)	2,000.00			2,000.00	" " "
Quebec:					
Laval Normal School, Ste.Foy Road, including new buildings and dependencies	72,000.00	20,000.00	3,000.00	95,000.00	" " "
Government Green houses, Dufferin Avenue	9,800.00	9,500.00		19,300.00	" " "
Arts School, St. Joachim Street	60,000.00	15,000.00		75,000.00	" " "
Spencer Wood, Sillery: Residence, green houses, dependencies, and other buildings, including the guardian's house on St. Louis road	80,000.00	22,300.00	36,900.00	139,200.00	" " "
Parliament Buildings	800,000.00	201,000.00		1,001,000.00	" " "
New Library of the Legislature		75,000.00		75,000.00	" " "
St. Julia Street, Annex		40,000.00		40,000.00	" " "

Insurance of public buildings in general (continued)

	On buildings	On furniture or contents	On dependen- cies and contents	Total	Expiration of policy
Restaurant		10,000.00		10,000.00	May 1st 1939
Furniture, 231 St. Paul street		6,000.00		6,000.00	" " 1937
Prop. Smith, George V Square	15,000.00			15,000.00	" " "
Corner St. Amable and St. Augustin Streets	6,000.00			6,000.00	Apr. 15 1938
Corner St. Amable and Conroy Streets	2,000.00			2,000.00	May 1st 1937
6 St. Amable and 146½ St. Augustin streets	2,000.00			2,000.00	Sep. 25 1937
Workmen's Compensation Commission Buildings	<u>70,000.00</u>	<u>18,000.00</u>		<u>88,000.00</u>	<u>May 1st 1939</u>
	1,611,400.00	548,700.00	56,800.00	2,216,900.00	

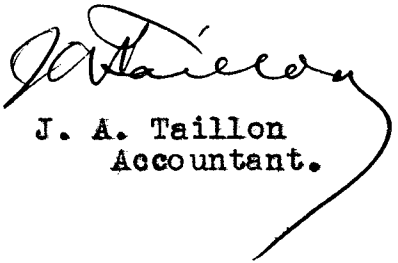
INSURANCE OF COURT HOUSES AND GAOLS

Name of buildings	On buildings	On furniture or contents	On dependen- cies and contents	Totals	Expiration of policy
Quebec Gaol	25,000.00	5,500.00	1,100.00	31,600.00	May 1st 1938
Quebec Gaol, Gaoler's house	1,200.00	500.00		1,700.00	" " "
Quebec Court House	19,500.00	1,000.00		20,500.00	" " "
Magdalen Islands	10,000.00	700.00	600.00	11,300.00	" " "
Perce (Gaspé)	13,000.00	800.00		13,800.00	" " "
New Carlisle (Gaspé)	10,000.00	1,000.00	400.00	11,400.00	" " "
Beauce	25,000.00	700.00	400.00	26,100.00	" " "
Chicoutimi (Court House and Old Gaol)	53,000.00	3,600.00	400.00	57,000.00	" " "
Chicoutimi (New Gaol)		5,000.00		5,000.00	" " "
Roberval	50,000.00	10,000.00		60,000.00	" " "
La Malbaie	24,000.00	600.00	400.00	25,000.00	" " "
Montmagny	25,000.00	1,100.00	400.00	26,500.00	" " "
Riviere du Loup	45,000.00	6,300.00		51,300.00	" " "
Rimouski	25,000.00	1,500.00	400.00	26,900.00	" " "
Amos	60,000.00	6,200.00		66,200.00	" " "
Valleyfield	40,000.00	2,200.00	200.00	42,400.00	" " "
St. Johns	20,000.00	1,700.00	400.00	22,100.00	" " "
St. Hyacinthe	34,500.00	1,700.00		36,200.00	" " "
Ste. Scholastique	15,000.00			15,000.00	" " "
Sweetsburg	25,000.00	1,700.00	400.00	27,100.00	" " "
Bryson	15,000.00			15,000.00	" " "

Insurance of court houses and gaols (continued)

Hull	50,000.00	10,300.00		60,300.00	May 1st 1939
Mont Laurier	50,000.00	8,300.00		58,300.00	" " "
St. Jerome	110,000.00	15,000.00		125,000.00	" " "
Campbell's Bay	65,000.00	6,300.00		71,300.00	" " "
Ville-Marie	10,000.00	8,000.00		18,000.00	" " "
Three Rivers (Court House)	115,000.00	10,000.00		125,000.00	" " "
Three Rivers (Gaol)	15,000.00	1,000.00	500.00	16,500.00	" " "
Sherbrooke (Court House)	125,000.00	25,000.00		150,000.00	" " "
Sherbrooke (Gaol)	29,000.00	1,500.00	500.00	31,000.00	" " "
Sorel	25,000.00	1,500.00	400.00	26,900.00	" " "
Arthabaska	25,000.00	1,000.00	400.00	26,400.00	" " "
Joliette	50,000.00	6,000.00	400.00	56,400.00	" " "
Nicolet	15,000.00	2,500.00		17,500.00	" " "
Montreal (Old Court House)	430,000.00	50,000.00		480,000.00	" " "
Montreal (Court House Annex)	100,000.00	20,000.00		120,000.00	" " "
Montreal (New Court House)		75,000.00		75,000.00	" " "
Chaplain's House, Bordeaux	5,000.00			5,000.00	" " "
Governor's House, Bordeaux	5,000.00		200.00	5,200.00	" " "
TOTALS	1,759,200.00	293,200.00	7,500.00	2,059,900.00	

Department of Public Works,
Quebec, June 30th, 1936.

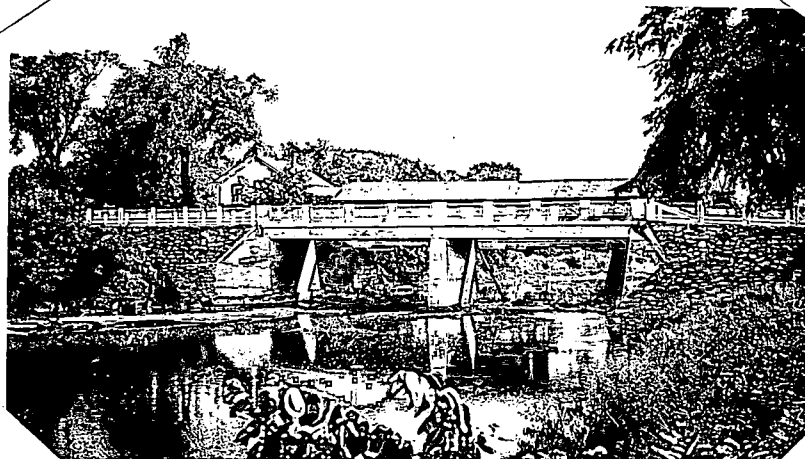

J. A. Taillon
Accountant.

DEPARTMENT OF PUBLICS WORKS

Province of Quebec

ANNUAL REPORT

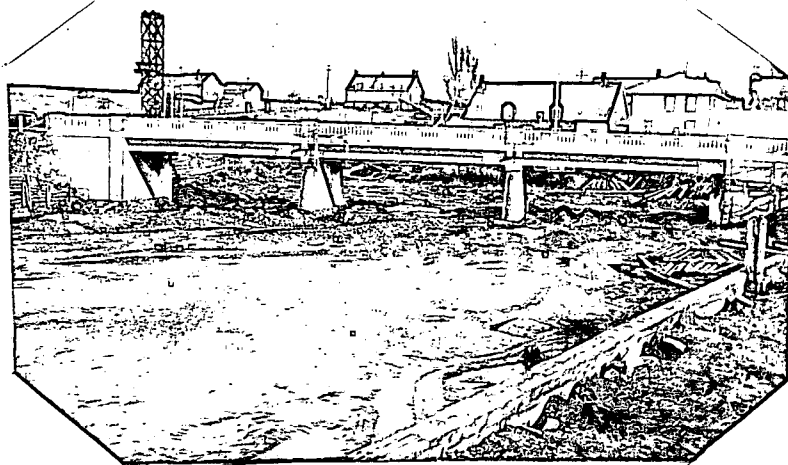
30th June, 1936



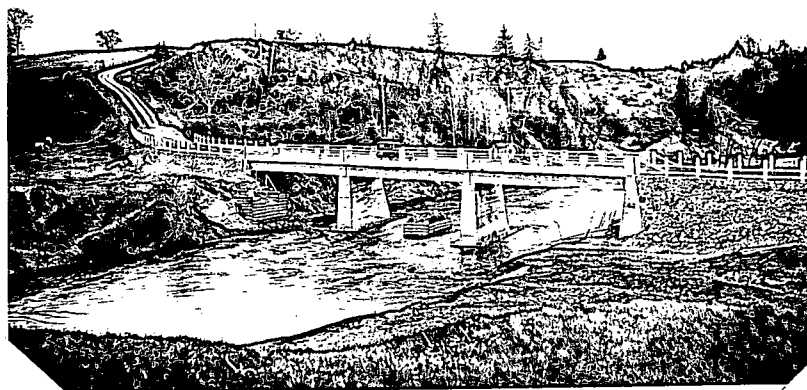
BAZINET BRIDGE OVER BAYONNE RIVER BETWEEN STE.GENIEVE, BERTHIER COUNTY, AND STE.ELISABETH, JOLIETTE COUNTY.- This bridge has a total length of 75 ft. divided in two spans and consists of a reinforced concrete deck resting on concrete substructure. Width of roadway 20 ft. Built in 1935. The old wooden covered bridge is seen in the background.



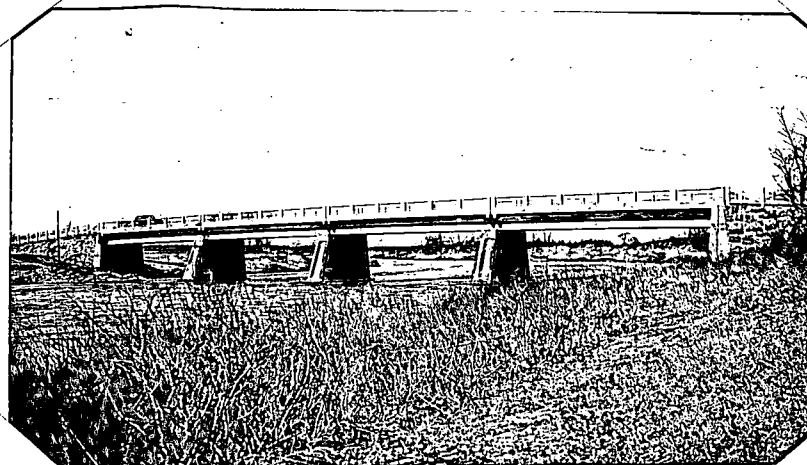
BARNETT BRIDGE OVER MISSISQUOI RIVER, IN THE TOWNSHIP OF POTTON, BROME COUNTY. (KNOWLTON-HIGHWATER HIGHWAY).- This bridge has a total length of 103 ft. and 6 in. divided in two spans and consists of a reinforced concrete deck resting on concrete substructure. Width of roadway 24 ft. Built in 1935.



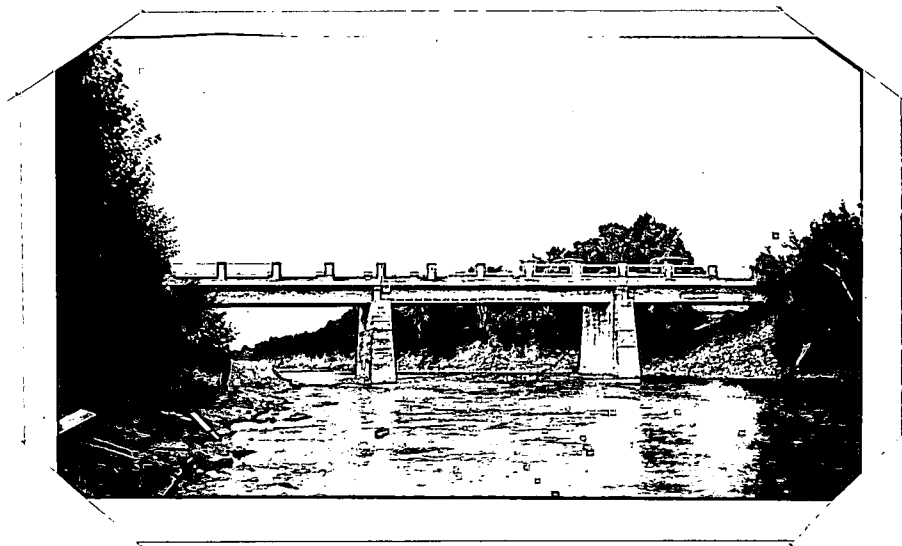
BRIDGE OVER TROIS SAUMONS RIVER AT ST. JEAN PORT JOLI, L'ISLET COUNTY.- (TRANS-CANADA HIGHWAY).- This bridge has a total length of 155 ft. divided in three spans and consists of a reinforced concrete deck resting on concrete substructure. Width of roadway 28 ft. Built in 1935.



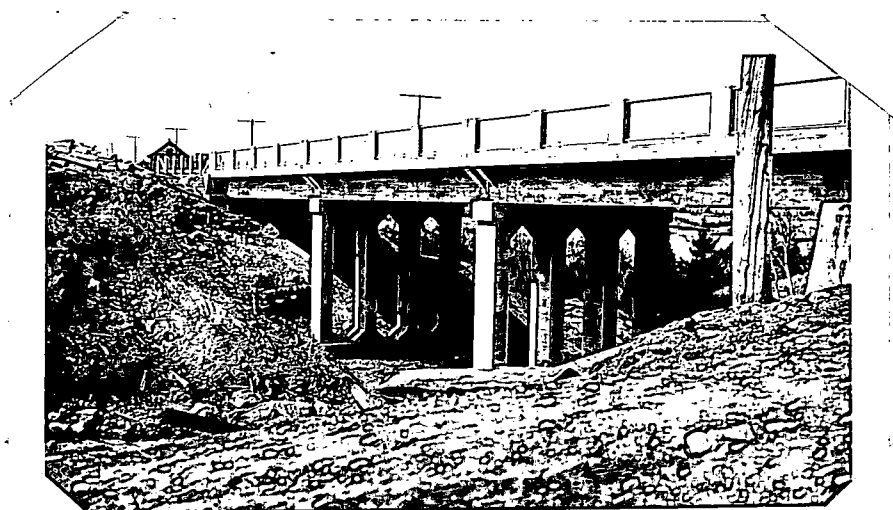
BRIDGE OVER MASKINONGE RIVER BETWEEN ST. JUSTIN AND STE. URSULE, MASKINONGE COUNTY.- This bridge has a total length of 154 ft. and 10 in. divided in three spans and consists of a reinforced concrete deck resting on concrete substructure. Width of roadway 20 ft. Built in 1935.



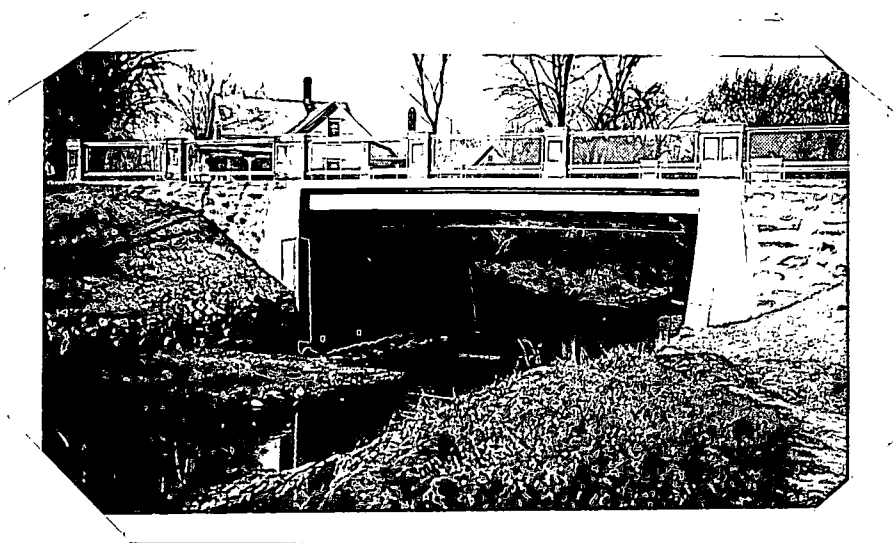
BRIDGE OVER BECANCOUR RIVER AT STE. ANASTASIE DE NELSON, RANGE 8, MEGANTIC COUNTY.- This bridge has a total length of 252 ft. 4 1/2 in. divided in four spans and consists of a reinforced concrete deck resting on concrete substructure. Width of roadway 18 ft. Built in 1935.



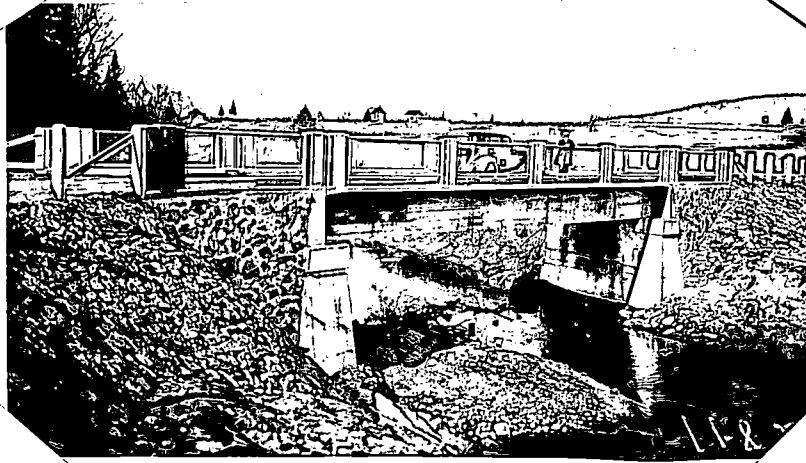
FRASER BRIDGE OVER BRAS ST. NICOLAS AT CAP ST. IGNACE, MONTMAGNY COUNTY.- This bridge has a total length of 137 ft. divided in three spans and consists of a reinforced concrete deck resting on concrete substructure. Width of roadway 18 ft. Built in 1935.



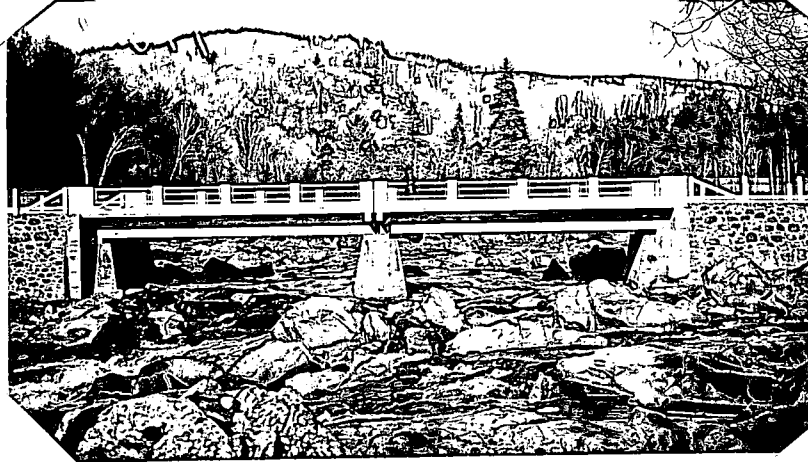
REINFORCED CONCRETE VIADUCT OVER ARTON BROOK AT TROIS PISTOLES, RIVIERE DU LOUP COUNTY. (RIVIERE DU LOUP-RIMOUSKI HIGHWAY).- This viaduct has a total length of 152 ft. divided in three reinforced concrete spans. Width of roadway 27 ft. Built in 1935.



BRIDGE OVER GIROUARD RIVER AT MARIEVILLE, ROUVILLE COUNTY.- One 30 ft. span. Reinforced concrete deck resting on concrete substructure. Width of roadway 24 ft. Two sidewalks of 4 ft. each. Built in 1935.



"ROUGE" BRIDGE OVER SHAWINIGAN RIVER AT ST.MATHIEU, ST.MAURICE COUNTY.- One 65 ft. span. Reinforced concrete deck resting on two concrete abutments. Width of roadway 20 ft. Built in 1935.



ST.JOSEPH DU MONT ROLLAND BRIDGE OVER RIVER DU NORD AT ST.JOSEPH DE MONT ROLLAND, TERREBONNE COUNTY.- This bridge has a total length of 88 ft. divided in two spans and consists of reinforced concrete deck resting on concrete substructure. Width of roadway 24 ft. Built in 1935.

TABLE OF CONTENTS

	Pages
Letter from the Minister of Public Works to His Honour the Lieutenant-Governor	1
Historical Notes	2
List of the services and principal officers	3
Chap. I Building and Maintenance of Highway Bridges - Chief Engineer's Report	5
II Construction and maintenance of Parliament Buildings, including Court Houses and Gaols - Report of the Architects Branch	12
III Fire Prevention - Report of the Fire Commissioner	18
IV Railways - Report of the Director of Railways	21
Table "F" - Railways of the Province of Quebec	24
V Toll Bridges and Roads - Report of the Director	34
VI Receipts and Expenditures - Report of the Accountant	39
Government Fire Insurances	42