

6

GENERAL REPORT
OF THE
MINISTER OF PUBLIC WORKS
OF THE
PROVINCE OF QUEBEC
FOR THE YEAR ENDING 30th JUNE
1937

TABLE OF CONTENTS

	Pages
Letter from the Minister of Public Works to His Honour the Lieutenant-Governor	1
Historical Notes	2
List of the services and principal officers	3
Construction, improvement and maintenance of Highway Bridges - Chief Engineer's Report Chapter	I
Construction and maintenance of Parliament Buildings, including Court Houses and Gaols - Report of the Ar- chitects Branch "	II
Fire Prevention - Report of the Fire Commissioner "	III
Railways - Report of the Director of Railways "	IV
Railways of the Province of Quebec Table	F
Toll Bridges and Turnpike Roads - Report of the Director Chap.	V
Government Fire Insurances Chapter	VI
Receipts and Expenditures - Report of the Accountant "	VII

DEPARTMENT OF PUBLIC WORKS

Province of Quebec

To the Honourable E. L. Patenaude, P.C., K.C.,
Lieutenant-Governor of the Province of Quebec.

Sir,

In compliance with the Revised Statutes of the Province of Quebec, 1925, and their amendments, I have the honour to submit a general report of the working of the Department of Public Works during the fiscal year 1936-37.

I have the honour to be,

Sir,

Your obedient servant,

J. S. Bourque

Minister of Public Works.

Quebec, September 21st, 1937.

HISTORICAL NOTES

of the

DEPARTMENT

1867-1888, Agriculture and Public Works

1888-1901, Public Works

1901-1905, Colonization and Public Works

1905-1931, Public Works and Labour

1931-1934, Public Works

1934-1936, Public Works, Game and Fisheries

1936 Public Works, (Bureau of Mines under
 the control of the Minister)

1936 to date, Public Works

PUBLIC WORKS

Honourable Cesaire Gervais, K.C., Minister till August 26th, 1936.

Colonel Honourable J. S. Bourque, Minister since August 26th, 1936.

Ivan E. Vallée, B. Sc. A., Deputy Minister.

LIST OF THE SERVICES AND PRINCIPAL OFFICERS

A.- Construction and Maintenance of Highway Bridges.

Olivier Desjardins, B. Sc. A., Chief Engineer and Assistant
Director of Railways.

J. G. O'Donnell, B. Sc. Maintenance Engineer.

F. B. Painchaud, B. Sc. A., Engineer of Metallic Construction.

Camille Milot, B. Sc. A., Assistant to Chief Engineer.

J. C. L. Trempe, B. Sc. A., Assistant to Maintenance Engineer.

B.- Construction and Maintenance of Legislative and other Buildings, including Court Houses and Gaols.

Sylva Frappier Architect and Director of Public
Works.

Léopold Fontaine, B.A. Architect.

A. H. Tremblay Architect.

C.- Fire Prevention

Ernest Lavigne, B. Sc. A. Commissioner.

F. X. Ahern, B. Sc. Assistant-Commissioner.

D.- Legal

Maxime Morin, K.C. Law Officer

E.- Accountancy.

J. A. Taillon Chief Accountant.

Léonidas Blais Assistant Accountant.

F.- Secretary's Office

J. Alphonse Drolet Secretary.

René Dupuis Assistant Secretary.

G. Registrar

J. G. Duchesneau Assistant Registrar.

H.- Purchasing Branch

Adélard Côté Purveyor, at Quebec, and
General Superintendent.

J. E. Gélinas Comptroller.

A. H. Baron Superintendent, at Montreal.

I.- Post Office

Aimé Dechêne Postmaster.

J.- Railways

K.- Toll Bridges and Roads.

(Both services are directed by the Deputy Minister)

L.- Embellishment and Floral Decorations

Honoré Auger Head gardener

M.- Workshops.

Georges Lavoie Superintendent and General
Overseer.

Ed. Blouin Foreman of joiners.

Alphonse Proulx Foreman of plumbers

Ferdinand Bertrand Foreman of electricians.

Ed. Picard Foreman of painters.

Georges Fleury Foreman of laborers.

Jos. Paré Head of heating system.

N.- Maintenance of Parliament Buildings
(cleaning)

Théodore Bernard Superintendent.

CHAPTER I
CONSTRUCTION AND MAINTENANCE OF HIGHWAY BRIDGES
Report of the Chief Engineer

Quebec, June 30th, 1937.

To the Honourable J. S. Bourque,
Minister of Public Works,
QUEBEC.

Sir,

I have the honour to submit my report for the fiscal year ending on June 30th, 1937, covering the construction, improvement and maintenance of highway bridges under the control of your department, which bridges must be of a permanent type of construction and of a span of not less than 20 feet.

- A -

CONSTRUCTION BRANCH

The Government, through the office of your department, offers its cooperation as it has done in the past, to the municipalities desiring to replace old bridges existing within their limits by new structures of a more permanent character, and the advantages to be derived from such assistance are so well appreciated that numerous requests from municipalities all over the Province have been received this year again.

Owing to the limited budget at its disposal, the Department has only been able to contribute towards the construction of the most urgently needed bridges, preference being given to structures located on improved roads. In the other cases, the Department, in answer to the requests received from the municipalities, has suggested them to temporarily strengthen the existing structures in order to insure the safety of the traffic until such time as it becomes possible for the Department to give the desired financial help.

Notwithstanding these conditions, the number of bridges built during

the lapsed year is the same as for the preceding year and the projects under construction are also as numerous.

Following each request received, the engineers of your département have visited the site of the proposed bridge in order to ascertain the condition of the existing structure and to collect all necessary data and information for the preparation of plans and specifications for a new bridge.

Most of the bridges that required to be rebuilt were old wooden structures which on account of their narrow roadway and their lack of rigidity were a constant menace to the safety of the traffic which has so rapidly increased in tonnage in late years. When these structures were located at points where it appeared necessary or merely recommendable to straighten the alignment of the road, special care was taken in choosing the site for the new bridge in view of improving existing conditions as much as possible.

In designing each project, it was necessary to make a study of the physical conditions of the locality in order to adopt the type of construction which would prove the most economical and at the same time the best suited to satisfy the requirements of the traffic. Plans and specifications for the execution of the project were afterwards prepared in each case.

As in the past, we have encouraged the use of materials of Canadian origin, and preferably of those of the Province of Quebec, and also the employment of local labor in the prosecution of the work. In order to safeguard the interests of both the Department and the concerned municipalities, resident-engineers and inspectors under the direct control of the Department have been posted, whenever possible, to supervise the work and make sure that it was carried out in accordance with the plans and specifications.

The information obtained through the laboratory for testing materials concerning the quality of the concrete made and of the materials used has proved most valuable to us and as a matter of fact this service could not be possibly be dispensed with.

Notwithstanding the fact that the decision concerning the construction of bridges is generally left to the municipalities, since they are the proprietors of the bridges located within their limits, the Government however has, on account of the great importance of bridges located on improved roads and particularly on highways linking large communities, built at its own expense several bridges which were badly needed and for the construction of which the interested municipalities could not contribute financially. Six of the bridges erected during the lapsed year have thus been built entirely with Government funds; amongst these are the bridges: over Petite Rivière du Loup, at Louiseville, county of Masanonge; over Petite Cascapedia river, at New Richmond, county of Bonaventure; over Foisy river, at Piedmont, county of Terrebonne. Nine are actually under construction also at the expense of the Government, the most important of which are: the bridge crossing the south arm of the little outlet of lake St. John, at St-Joseph d'Alma, Lake St. John County; the bridge over Ruisseau Amyot, at St. Charles, county of St. Hyacinthe; the bridge over Godefroy river, between St. Angele de Laval and St. Gregoire, county of Nicolet and "Major" bridge, over "Riviere du Lievre", at Masson, county of Papineau.

We may add that two other bridges erected during the lapsed fiscal year were built in accordance with plans and specifications prepared by your department, but were erected under the supervision of the Highways' Department. These two bridges are located on the Trans-Canada Highway and cross Belisle and Lachevrotiere rivers at Deschambault.

Several photos annexed to this report show a certain number of bridges built or under construction.

Among the bridges built during the fiscal year ending on June 30th, 1937, we may mention:

Bridge over du Nord river,
at St. Andrew-East, county of Argenteuil.

Bridge over Petite Cascapedia river,
at New Richmond, county of Bonaventure.

Bridge over Eaton river,
at Cookshire, county of Compton.

Bridge over aux Saumons river,
at Gould (Lingwick Township), county of Compton.

Chapter 1 (page 4)

Bridge over Noire river,
at Ulverton (Durham Township), county of Drummond.

"Des Juifs" bridge over branch of Grondines river,
at St. Ubald, county of Portneuf.

"Marcel Roy" bridge over Metis river,
at St. Angele de Merici, county of Rimouski.

Bridge over Yamaska river in the third range
of St. Alphonse de Granby, county of Sherford.

Bridge over St. Francois river,
at Ascot Corner, county of Sherbrooke.

Bridge over du Nord river,
at Piedmont, county of Terrebonne.

"Champoux" bridge over St. Francois river,
at Disreéli, county of Wolfe.

The most important bridges under construction on June 30th, 1937,
are:

Bridge over aux Saumons river,
at Scotstown, county of Compton.

Bridge over the south arm of the little outlet of lake
St. John, at St. Joseph d'Alma, county of Lake St. John.

"Plessis" bridge over Etchemin river,
at St. Henri, county of Levis.

"Mooney" bridge over Becancourt river,
at Inverness Township, county of Megantic.

"Major" bridge over du Lievre river,
at Masson, county of Papineau.

"Barsalou" bridge over Yamaska river,
at St. Hyacinthe, county of St. Hyacinthe.

"Leblanc" bridge over Blanche river,
at St. Boniface, county of St. Maurice.

"Comptstock" bridge over Massawippi river,
at Lennoxville, county of Sherbrooke.

"Carriere" bridge over Nicolet river,
at Wotton, county of Wolfe.

"College Street" bridge, over Massawippi river,
at Lennoxville, county of Sherbrooke.

Bridge over St. Francois river,
between Bishopton and Dudswell, county of Wolfe.

The following statement gives a resume of the work done by the bridge
branch of your department since 1908:

Number of bridges built since July 1st, 1908, to June 30th, 1937	1,386
Total length of superstructure of the bridges built	148,815 ft
Number of bridges erected from July st 1936 to June 30th, 1937	37
Number of bridges under construction on June 30th, 1937	29

Total length of bridges under construction	4,683 ft.
Cost of bridges built	\$22,617,862.49
Government subsidies towards bridges built.....	\$ 16,787,684.97

We wish to remark that in the preceeding statement are included four bridges whose execution was authorized under the terms of the unemployment relief agreement of 1936 between the federal and provincial governments.

UNEMPLOYMENT RELIEF WORKS

Four of the bridges built in the Province under authority of the unemployment relief agreement are under the control of your department.

An amount of \$128,000.00 has been applied towards the construction of these bridges, the total cost of which was to be borne in equal shares by both governments. These funds, termed unemployment relief funds, were controlled by the Department of Labour of this Province and the supervision of the works as well as the preparation of the plans and specifications, was carried out by the technical staff of your department.

The bridges referred to are the following:

College Street bridge at Lennoxville, county of Sherbrooke.

St. Francois river bridge, between Bishopton and Dudswell, county of Wolfe.

Bridge over "ruisseau Villemaire" at Mont Laurier, county of Labelle.

Bridge at St. Perpetue, over Ouelle river, county of L'Islet.

The two last ones which are respectively 30' and 34'6" long were built by day labour under our supervision.

Work on the Mont Laurier bridge started in January last and it was opened to traffic in May, while the bridge at St. Perpetue was started in November and inaugurated at the end of February. There still remains however a certain amount of work to do on the latter which shall be completed in the course of July.

PARTICULARS CONCERNING FEW BRIDGES

You will find hereunder a short description of a few bridges which present some noteworthy features in their design.

College Street bridge at Lennoxville, in the County of Sherbrooke, consists of two 50' reinforced concrete approach spans and one 140' steel tied arch center span. The steel arch type of structure is new in this district; it is aesthetical and harmonized well with the surroundings, as

may be seen on the photo annexed at the end of this report. The floor is made of a reinforced concrete slab with a 24' roadway and two 5' sidewalks carried on cantilever brackets outside of the trusses.

The bridge over the St. François river between Bishopton and Dudswell, county of Wolfe, is the first all-welded structure built under the control of your department. Its total length is 366' comprising four steel spans (two 35' and 68' spans) and one 60' reinforced concrete span at the East end. Each steel span is made of two electrically welded plate girders continuous over the whole length of the bridge and on which rest transverse I beams carrying a reinforced concrete deck. The width of roadway is 20 feet.

The "Mooney" bridge over Becancourt river between St. Pierre Baptiste and Inverness, county of Megantic, has five 50' spans forming an aggregate length of 250 feet. Each span is made of three steel I beams spaced 7 feet on centers and carrying a B.C. Fir laminated floor 9" thick at center of roadway and covered with a one inch asphaltic wearing surface. The roadway is 20 feet wide and the railing consist of chain-link wire mesh fastened to wooden posts. The particular feature in the design of this bridge is that, owing to the slow speed of the current in the river, the superstructure instead of resting on piers as usual is carried on bents each of which consists of two rows of wooden piles driven into the river bed and well braced together above water level. Creosoted timber is to be used throughout in this construction.

"Major" bridge crossing river du Lievre at Masson, county of Papineau, on the Montreal-Hull highway, and for the construction of which tenders have just been called, will consist of three reinforced concrete open spandrel skew arches having each four ribs and a rise of 21'-6". The center span will be 118'-2" and the side spans 113'-5-5/8" each forming a total length of 345'-1 1/4". The railings and deck are reinforced concrete. The roadway will be 27' wide with two 4'-6" sidewalks on cantilever brackets.

- B -

MAINTENANCE BRANCH

Mr. J. G. O'Donnell
Maintenance Engineer

Since 1922, the Bridge Maintenance Branch has been attending to the repairs and maintenance in good order of permanent highway bridges, that is in a general way, of those built according to plans and specifications of the Department and subsidized in whole or in part by the latter. As we pointed out in previous reports, from 1922 up to 1930 it was the municipalities themselves who carried out the ordinary maintenance work and defrayed the cost of same, except when the work was too onerous or had a character of improvement, in which cases subsidies were granted by the Government, at the discretion of the Minister of Public Works.

While leaving the property of bridges entirely to the municipalities, the Government, in 1930, deemed it expedient to bear the cost of repairs and of ordinary maintenance work to bridges falling under the required category.

Up to the present time, expenditures of the Maintenance Branch have been paid out of the regular budget voted for highway bridges, whereas next year, as you are aware, a special item determined beforehand will be applied to the maintenance of bridges.

In the majority of cases, since 1930 and especially during the last two years, the works were executed by day labour under the direction of foremen engaged and paid by the Department of Public Works, who in turn were directed and supervised by the Branch's technical staff. Local labour was employed as well as suppliers of material chosen in each locality, preference being given to the use of products of the Province of Quebec.

During the Winter season, from December to March, the following year's program is prepared through office work, estimates, calculations, plans and specifications, statistics, correspondence, etc. etc. The active period extends from April to December, except in special cases where winter work is possible.

The municipalities in general favour the procedure adopted in assisting them in the keeping of their bridges in good order as it also provides a means of subsistence to their ratepayers without burdening the municipal budget with often heavy expenditures.

The important problem whose solution becomes more and more urgent is to improve quite a considerable number of constructions with regard to the width of roadway and their carrying capacity, in order to meet the ever increasing requirements of modern locomotion and transportation. There are in fact a great number of bridges on secondary roads which were built some 15 or 20 years ago and fully answered the needs at that time, but cannot any more in their present condition accommodate the traffic which has increased so considerably in volume and tonnage ever since.

Works of various kinds were executed on 177 bridges from July 1st 1936 to June 30th, 1937. The following is a list of the principal works which exceed \$500.00 in cost:

Bridge near Cantin Shops, at Warwick, Arthabaska county.

Manson bridge, in the Township of Potton, Brome county.

Taschereau bridge ("Chute Nairn"), at La Malbaie, Charlevoix county.

Twin bridges, at Kingsey Falls, Drummond county.

Seventh range bridge, over the Black River, at St. Germain de Grantham, Drummond county.

Francoeur-Devlin bridge, between Deschaillons (Lotbiniere) and St. Pierre les Becquets (Nicolet).

Chandonnet bridge, at St. Jacques de Parisville, Lotbiniere county.

Riviere-aux-Chiens bridge, near St. Anne de Beaupré, Montmorency county (protection crib).

Cartier-Ross and Galipeault bridges, at Maskinonge.

Dupuis-Jeffries bridge, between St. Julienne and St. Liguori, Montcalm county.

Galipeault-Savoie bridge, at St. Brigitte des Saults, Nicolet county.

Viaduct over Jacques-Cartier river, at Donnacona, Portneuf county.

Twin bridges, at Roxton Falls, Shefford county.

Knight bridge, over au Saumon river, Township of Ascot, Compton county.

Bridge over the North river, at Shawbridge, Terrebonne County.

Petit Bras bridge at Varennes, Verchères county, and a great number of other constructions put into good condition.

Besides municipal bridges, there are also the Government owned toll bridges which have to be maintained in good order and repaired whenever necessary. As our report closes with the date of June 30th, when our program is in full swing, it happens that works undertaken in the Spring are completed after that date. Separate accounts are kept of the moneys expended on one budget or the other. This method of cutting the fiscal year on the 1st of July is not however without causing some inconveniences.

We propose to continue next year the sitting in place of 500 signboards, as illustrated in the 1935 report, indicating the carrying capacity of the bridges.

UNEMPLOYMENT RELIEF WORKS

The two St.Maurice river bridges (East and West channels) at Three Rivers, have been repaired with funds placed at the disposal of the Department by the Unemployment Relief Branch of the Department of Labour; both the Federal and Provincial Governments contributing in equal proportions.

It was in October 1936 that was resumed the work of completing the reinforcing of the substructure units of these two bridges, part of which (West Channel) had been executed in 1924.

At the West channel bridge, 4 of the 12 piers of the substructure had been repaired in 1924. The other 3 units were retouched this year. At the East channel bridge, 8 units were also repaired at their base.

The rails having been removed from the floor of these bridges, it was necessary to have certain repairs made with a view of laying down an asphaltic covering before receiving the asphalt planks of the wearing surface. This work was done on the entire length and width of the two bridges.

In addition, these bridges have been provided with two sidewalks for the use of pedestrians.

Chapter I (page 10)

The electrical system was also completely altered by the Electric Power Company.

The superstructure of both bridges was closely examined, defective rivets replaced and the whole steelwork repainted with aluminum paint.

With these works completed, the City of Three Rivers possesses two bridges in perfect condition provided with a 25 ft. roadway and two 4 ft. sidewalks. The repairs ~~as~~ made to the roadway as well as the widening of the two sidewalks tend to considerably improve traffic conditions at that point, as the photographs of the bridge before, during and after the execution of the work will show.

Before closing, I have pleasure in acknowledging the efficient assistance and cooperation afforded me by the staff.

Respectfully submitted,

O. Desjardins
O. Desjardins
Chief Engineer. *par G. Milot*

CHAPTER II

CONSTRUCTION AND MAINTENANCE OF GOVERNMENT BUILDINGS

Report of the Architects' Branch

Quebec, June 30th, 1937.

To the Honourable J. S. Bourque,
Minister of Public Works,
Quebec, P.Q.

Sir,

We have the honour to submit the report of our activities during the fiscal year 1936/37, concerning the construction and maintenance of Government buildings and others.

The work was distributed over the following classes of buildings:

- A- Court Houses and Gaols.
- B- Legislative and Public Buildings.
- C- Normal and special schools.
- D- Various buildings, such as Morgues,
Registry offices, etc.

- A -

COURT HOUSES AND GAOLS

AMOS (Abitibi):

Painting work: exterior storm-sashes.
Repairs on the electric system.
Plaster work: repairs to the ceiling of the Prothonotary's private office.

ARTHABASKA (Arthabaska):

Furniture for a few rooms: magistrate's office; lawyers' vestuary; library.
Masonry work: cement step; rejoining of a part of the wall around the gaol's yard.

CAMPBELL'S BAY (Pontiac):

Renewing of a jacket-heater.
Repairs to the roof.
Rejoining of a part of the wall around the gaol's yard.

CHICOUTIMI (Chicoutimi):

Court House:

Plumbing work: installation of safety valves.
Repairs to the roof.
Carpentry work: repairs to the doors of the main entrance.
Repairs to the heating system: grates for furnaces.
Painting work: doors of the main entrance.

Gaol:

Hardware work: repairs and improvements of the cell doors.
Concrete work: slab for the gaol-keeper's main entrance.

HAVRE AUBERT (Magdalen Islands):

Repairs to the court house and dependences: shingle roofing;
wainscoting of the exterior walls; painting work.

HULL (Hull):

Repairs to the roof.
Repairs to the heating system: furnace sections.
Carpentry work: construction of a division in the gaol-keeper's office.

JOLIETTE (Joliette):

Repairs of ordinary maintenance work in the gaol-keeper's apartments: painting and varnish.
Carpentry work: installation of fly-netting on a few windows of the court house.

MURRAY BAY (Saguenay):

Repairs to the roof and gutters.
Plumbing work: installation of a larger water-supply pipe on the domestic water system, between the water main and the court house, with connections for the fire-hose.
Repairs to the heating system: grates for furnaces; renewing of the impeller on the hot water tank blower, and of the piping system between the hot water tank and the furnaces.

MONT LAURIER (Montcalm):

Repairs of ordinary maintenance work in the gaol-keeper's apartments: carpet, oilcloth, painting, curtains.
Carpentry work: repairs to the fence; execution of a sidewalk in front of the building.

MONTMAGNY (Montmagny):

Plumbing and masonry repairs.

MONTREAL (Montreal) Court Houses:

New Court House:

Ordinary maintenance work and painting work in several offices.
Carpentry work: construction of show-cases and glass partitions in the offices of the Forestry Service Branch; cupboard for the Cadastral Service; wooden racks for the Prothonotary's vault.

Old Court House:

Repairs to the roof and windows.
Tile and marble work: floor of a lavatory; marble wainscot in the Circuit Court and the Library.
Terrazzo work: floor of hall of the third story.
Ordinary maintenance work and painting in several offices.
Furniture for several offices.
Elevators repaired and renewing of the cables on two of the four machines.
Plumbing work: accessories in several offices and Prothonotary's and Circuit Court lavatories.
Repairs on heating system: pumps, turbines, hot water tank.

Old Court House (continued):

Carpentry work: wooden racks for the Circuit Court's clerk's office; linoleum on the floor of the Archive's office.

General renewing of all the electric system in the old part of the building, involving: the construction of a vault for the transformers connected to the electric room of the new court house; installation of main and secondary distribution panel-boards on every story.

The lighting fixtures shall be carefully examined as soon as all the wiring renewing is completed about August.

A few repairs were also done on the electric system of the censor's office in the annex.

Bordeaux Gaol:

Installation of three units in the laundry section: (crimping machine; washing machine and a wringing machine).

Construction of a vegetable vault; repairs and ordinary maintenance work for which we have furnished the materials.

Protestant Women's Gaol:

Plaster work: repairs.

Carpentry work: repairs to the wood-work and construction of partitions.

Plumbing work: laying out of a toilet room; repairs and ordinary maintenance work in two other toilet rooms involving the installation of new fixtures.

Installation of an electric refrigerator.

NEW CARLISLE (Gaspé):

Painting and ordinary maintenance work in the apartments of the gaol-keeper's ward.

NICOLET (Nicolet):

Painting and ordinary maintenance work in the gaol-keeper's ward.

Carpentry work: correcting and improving the wood-work in the lawyers' vestuary and furnishing of six steel racks.

QUEBEC (Quebec):

Court House:

Besides the ordinary maintenance work of the building: (cleaning, polishing of the wood-work, furniture for the Courts, repairs on the plumbing, heating and electric systems) for which we have furnished the materials in most cases, let us mention: the opening of a door, between the Library and an adjoining room, with marble-frame and doorcase, painting of the exterior storm-sashes; installation of iron window guards and enclosures in prisoners' quarters; equipping doors of the same section with strong automatic locks.

Quebec Gaol:

Terrazzo work: floors of all the cells and halls in one of the sections of the prison (section 24).

Carpentry work: repairs to the doors and sashes.

Masonry work: walling up of a door in the basement.

Redistribution of several rooms in the protestant chapel wing; wooden and masonry partitions; laying out of a chapel.

Ordinary maintenance work of the oil-burners and of the plumbing and heating systems.

Plaster work: metal lath ceilings in several rooms of the basement and ground-floor.

Notre-Dame de la Merci Refuge:

Plaster and masonry work in a few places of the building.

Repairs on the heating system: machinery, chromium plates.

Ordinary maintenance work: painting, rejoining, plumbing, etc.

Improvement of the surface of the driveway from the Chemin Ste-Foy road to the gaol; straightening of the driveway; grading and pavement of the parking ground of the main entrance of the gaol as far as the Gomin road.

Work on the electric system: repairs on the main cables.

RIMOUSKI (Rimouski):

Plumbing work: main **sewer** for the building.
Work on heating system: grates and water tank renewed.

RIVIERE DU LOUP (Kamouraska):

Work on the heating system: grates for the heater of the domestic water system.
Painting work: stairs and exterior doors.
Masonry work: rejoining of the steps on the main entrance.
Carpentry work: rubber mats on the steps of the stairs; replacement of glass panes; improving the sashes.
Plumbing work: drainage; W.C. in a toilet room.

ROBERVAL (Roberval):

Repairs on the heating system: hot water tank; furnaces; boilers.
Installation of blinds and curtains in the judge's apartments.
Grading work.

SHERBROOKE (St. Francis):

Court House:

Improvement of all the sashes by the addition of metal weatherstrips on the windows and by the correcting of the wood-work and frames.
Plumbing work: safety valves on boilers.
Ordinary maintenance work on the heating system.
Ordinary maintenance work and painting in the corridors, several offices and gaol-keeper's apartments; covering of floors with linoleum.
Masonry work: cement surface on the floor of the elevator machinery room; rejoining of the entrance steps. Asphalt surface on the automobile parking ground; repairs to the pavement of the main alley.
Reconstruction of the ground-plot steps leading to the entrance steps of the court house.
Ordinary maintenance work on the elevators.
Plans are being laid out and are nearly completed for the construction of a fire-escape.

Gaol:

Ordinary maintenance work in the gaol-keeper's ward.
Repairs to the roof of the shed.
Steel work: 13 iron window guards.
Painting work: sashes.
Electric work: partial repairs.
Masonry and rejoining work: retaining wall of the cellar's entrance in the prisoners' yard.

SOREL (RICHTELIEU):

Ordinary maintenance work in the gaol-keeper's office.
Plumbing work: three new W.C.; sewage.
Renewing of a stove; installation of an enamelled tub; hot and cold water taps.
Ordinary maintenance work and painting in the Magistrate and Practice Courts, and also in the Magistrate's office.
Carpentry work: fence around the ground.
Ordinary maintenance work: oilcloth on the prison's kitchen floor and corridor leading to the kitchen.

ST. HYACINTHE (St. Hyacinthe):

Plumbing work: renewing of a brass water tank on the domestic water system.
Masonry work: improvement of a defective window (stone-work).

ST. JEROME (Terrebonne):

Partial improvements on the electric system.

ST. JOSEPH (Beauce):

Masonry work: improving the side-walk in front of the court house.
Repairs to the roof.
Plumbing work: renewal of a tank for the domestic hot water system.

SWEETSEBURG (Bedford):

Work on the heating system: furnaces repaired.
Ordinary maintenance work in the gaol-keeper's ward.
Work on the electric system: wiring and installation of three lights in the Court room and on the lawyers' tables.
Wall-papering of two rooms.
Painting work: walls and cells' floors in the gaol.

THREE RIVERS (Three Rivers):

Improvements in three offices: painting and polishing; installation of sound-proof doors.
Work on electric system: lamp-post at the main entrance; partial repairs.
Last November started the demolition of a small annex at the back of the main building in view of the construction of a large annex containing a Magistrate's Court; the jury's quarters; the Bar's Library and vestiary; vaults; cells for temporary confinements; a more modern heating plant. The work, included in the Unemployment Relief Program, is normally progressing. It is an entire fireproof construction: reinforced concrete frame-work; lime stone facing for the exterior walls; the architectural treatment being in harmony with the old building.

Gaol:

Renewing of a kitchen stove.
Installation of bars in five sashes.

VALLEYFIELD (Beauharnois):

Hardware work: special padlocks of the prison cells renewed.

VILLE MARIE (Temiscamingue):

Renewing of a stove.
Furnishing of a washing machine for the laundry.
Painting work: floors and stairs in the gaol.

- B -

LEGISLATIVE AND PUBLIC BUILDINGS

MONTREAL

Government offices:

Work on the heating system: galvanized pipe of the furnaces of the Circulation Department; renewing of a furnace section.
Carpentry work: repairs and redistribution of partitions in the Pipe-Mechanics and Boiler inspectors' Branch offices.
Electric work: repairs on the main parts; distribution panels; feeding cables.
Repairs to the roof: a sky-light and flashings.
Carpentry work: partitions for the furnishing of a new office for the electrician examiners.
Ordinary maintenance work and painting in several offices of the Game and Fisheries Department where all the show-cases were laid out into offices.

QUEBEC:

Agriculture Building "D" :

Terrazzo work: floors, plinth and borders in a few rooms of the basement.
Carpentry work: installation of a great number of wooden and glass partitions.

Legislative Buildings (A.B.C.):

Masonry work: renewing of the brick walls enclosing the steam boilers.
Ordinary maintenance work on the elevators: cables, surety brakes, braces, etc. Installation of special mirrors in the elevators of building "C".
Terrazzo work: floor in an apartment of the Provincial Police force.

Carpentry work: wooden partitions in several offices specially in those of the Revenue Branch.

Laying out of new vaults.

Ordinary maintenance work and painting in a great number of offices improved by the addition of radiators; new floor covering and electric fixtures.

Installation of a steam automatic tank for the drying of the wood in the workshops of building "A".

Erection of a temporary altar on the occasion of the Corpus Christi day; and miscellaneous decorations for the Coronation and the Congress of the French Language.

Roads Building "E":

This building was practically completed by the end of August and was occupied in September by the Road Department; Mines and Fisheries Department, Municipal Affairs, Commerce and Industry.

The moving in of all the furniture and vouchers of these several Departments involved considerable laying out works: construction of racks; cupboards in the vaults; all kinds of furnishings for the accountant and registrar offices; wooden partitions to divide large apartments; laying out of the bell system between all the offices.

The Mines and Material Testing laboratories were installed in the upper stories: construction of special furnishing.

So as to give a prompt and rapid service, painters' and carpenters' workshops were temporarily laid out in the main building where the workmen are occupied at the above mentioned works as well as at the ordinary maintenance work: plaster repairs; painting; repairs on the plumbing and electric systems.

Workmen's Compensation Commission:

Carpentry work: stacks for vaults; sundry repairs.

Installation of electric fans, etc.

Works executed by our workmen's staff and for which the materials were furnished.

Quebec Liquor Commission:

Rejointing work: repairs,- under our supervision,- (for the Commission) of all the brick facing of the upper stories of the main facade between the projecting parts.

Provincial Museum:

Rejointing work: defective parts of the main entrance's steps.

Digging of a small portion in the cellar for a carpenters' workshop.

Repairs to the lead flashing of the cornice and of the parapets.

Spencer-Wood:

Work on the heating system: improvement of the feed pipe of the expansion tank of the heating and domestic water systems.

Transformations and alterations of the decorations of the main dining-room; wooden wall panels with wall-paper ground; renewal of radiators and grates.

Painting and plaster work: repairing three ceilings and redecoration of a small parlor.

Improvement of the pavement of the main entrance alley.

- C -

SCHOOLS

MONTREAL:

Fine Arts School:

Repairs to the roof.

Plumbing work: sewage and toilet rooms.

Jacques Cartier Normal School:

Work on electric system: achievement of several repairs by the addition of lighting units.

Carpentry work: fence and repairs of a staircase; renewal of a staircase at the back of the building; erection of a steel fence around the tennis game.

QUEBEC:

Laval Normal School:

Carpentry work: renewing of the high fence of the playgrounds;
of the floor of the gallery with an addition; improvement of
the hand ball court (roof, coverings, floor).
Improvement of the interior staircases.
Repairs to the plumbing system and to the roof.
Painting work.

- D -

VARIOUS BUILDINGS

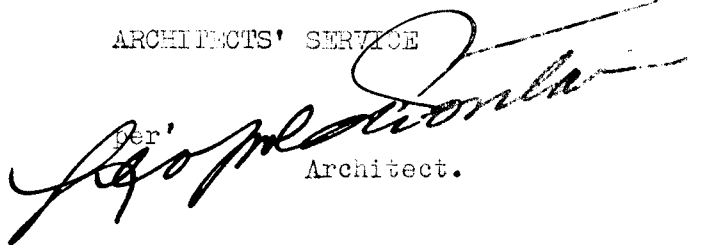
SANITARY UNIT (Farnham):

The post-office building, acquired from the federal government,
was transformed and laid out according to our specifications
and details, in view of lodging the Unit of the Sanitary Service:
corrections and improvements on the plumbing, electric and heating
systems; construction of partitions; repairs of the plaster work;
general painting; floor covering; rejoining; repairs to the roof;
etc.

Besides, our technical services were required for the examination
of the St. Hyacinthe Dairy School heating system; for the inspection of
a morgue at Joliette and for a Government building at Mont-Joli. And
during the present year, we have studied and written out the programs
for several buildings such as the Provincial Police Headquarters and
Coroner's Court; Gaol at Hull.

It is also under our supervision and direction that were executed
the works for the restoration of the Jesuites' residence, Sillery,
to be charged to the account of the Historical Monuments Commission.

ARCHITECTS' SERVICE

per 
Architect.

CHAPTER III

FIRE PREVENTION

Report of the Fire Commissioner

Quebec, June 30th, 1937.

To the Honourable J. S. Bourque,
Minister of Public Works,
QUEBEC, Que.

Sir,

I have the honour to submit my annual report in conformity with the Fire Prevention Act (R.S.Q., 1925, chap. 180).

During the past year, 61 municipalities have installed a fire protection system or improved the one they had and, on this account, were paid, under section 11 of the Act, the grants shown in the following list:

<u>Municipalities</u>	<u>Counties</u>	<u>Grants</u>
Almaville	Laviolette	\$ 2,500.00
Asbestos	Richmond	2,043.97
Beauceville-East	Beauce	2,500.00
Bon Secours	L'Islet	4,197.02
Bury	Compton	3,000.00
Charlemagne	L'Assomption	4,121.18
Deux-Rivières	Champlain	150.64
Disraeli	Wolfe	2,000.00
Duparquet	Abitibi	12,000.00
Escoumains	Charlevoix-Saguenay	10,000.00
Farnham	Missisquoi	841.62
Huntingdon	Huntingdon	2,500.00
Lachute	Argenteuil	18,000.00
Laprairie	Laprairie	1,900.00
Coteau Station	Soulanges	300.00
Laval sur le Lac	Laval	4,767.89
Lennoxville	Sherbrooke	7,000.00
L'Epiphanie	L'Assomption	296.36
Maniwaki	Gatineau	643.15
Massueville	Richelieu	49.50
Mont Joli	Matane	331.30
Mont Laurier	Labelle	471.00
Napierville	Napierville	3,000.00
Nicolet	Nicolet	210.00
N.D. de Portneuf	Portneuf	1,185.90
Pointe aux Trembles	Laval	7,800.00
Roberval	Roberval	9,509.70
Rouyn	Temiscamingue	7,250.00
St. Adelphe	Champlain	169.05
St. Alexander	Kamouraska	2,800.00
St. Barthelémy	Berthier	1,325.75

Chapter III (page 2)

<u>Municipalities</u>	<u>Counties</u>	<u>Grants</u>
St. Ann	Chicoutimi	\$ 250.00
St. Antoine de Padoue	Vercheres	301.90
St. Casimir-East	Portneuf	119.00
St-Clet	Soulanges	137.83
St. Emelie	Lotbiniere	209.01
St. Felix de Valois	Joliette	200.00
St. Flavien	Lotbiniere	2,190.00
St. Georges-East	Beauce	402.50
St. Germaine du Lac Etchemin	Dorchester	61.78
St. Guillaume	Yamaska	1,335.50
St. Hilaire	Rouville	266.70
St. Jean Port Joli	L'Islet	106.50
St. Joseph	Beauce	554.00
St. Joseph de Deschambault	Portneuf	500.00
St. Marc de Cournoyer	Vercheres	33.29
St. Marcel	Richelieu	3,192.50
St. Pascal	Kamouraska	99.69
St. Philippe de Neri	Kamouraska	2,050.05
St. Philomene de Fortierville	Lotbiniere	335.71
St. Polycarpe	Soulanges	125.00
St. Romuald	Levis	12,040.61
St. Thecle	Laviolette	2,288.66
St. Therese	Terrebonne	900.00
St. Zacharie	Dorchester	2,428.03
Val d'Or	Abitibi	18,500.00
Vaudreuil	Vaudreuil	2,780.00
Victoriaville	Arthabaska	1,387.40
Warwick	Arthabaska	600.00
Weedon Centre	Wolfe	7,000.00
Wottonville	Wolfe	14,556.48
Total :		\$ 192,816.17

Special boni were also awarded and paid the following 16 municipalities which changed their hose couplings or made those in use similar to the type adopted for the Province:

<u>Municipalities</u>	<u>Counties</u>	<u>Grants</u>
Charlemagne	L'Assomption	\$ 109.55
Ferme Neuve	Labelle	24.50
Coteau Station	Soulanges	17.38
Mont Joli	Matane	129.00
Mont Laurier	Labelle	86.35
Nicolet	Nicolet	242.80
N. D. de Portneuf	Portneuf	31.80
Pointe aux Trembles	Laval	200.00
St. Adelphe	Champlain	28.25
St. Ann	Chicoutimi	136.28
St. Clet	Soulanges	24.75
St. Felix de Valois	Joliette	27.75
St. Guillaume	Yamaska	22.95
St. Helene de Breakeyville	Levis	234.00
St. Joseph	Beauce	46.00
St. Polycarpe	Soulanges	28.18
Total		\$ 1,389.54

Our inspector-instructors continued their usual visits to municipalities which received a grant in virtue of the Act. One of them was specially concerned in providing instruction for the volunteer brigades

Chapter III (page 3)

in the most modern ways and means of fire fighting while the other's particular mission was to cooperate with the chiefs which he visited in eliminating all kinds of hazards existing in stores, restaurants and garages. In a few years, it will be possible to submit for your consideration figures showing the very satisfactory results obtained following these inspections.


The number of inquiries into fires of suspicious origin has decreased slightly this year because of the smaller number of requests received. The following cumulative table will give you an idea of the work accomplished:

YEAR	FROM TO	1913 1929	1929 1930	1930 1931	1931 1932	1932 1933	1933 1934	1934 1935	1935 1936	1936 1937
Inquiries requested		29	46	80	173	291	387	502	621	704
Inquiries held		29	42	64	114	217	315	371	518	585
Witnesses sworn		163	279	488	974	1764	2383	3053	3701	4205
Accusations		1	3	5	11	26	47	66	83	94
Convictions		0	0	3	6	10	22	30	42	46

Statistics compiled by my office on fire losses in the Province during 1936 show the following facts:

Total property loss	\$ 6,645,210.00
Total loss, covered by insurance	\$ 5,367,140.00
Total loss, not covered by insurance	\$ 1,278,070.00
Number of fires with a loss of more than \$10,000.00 each	98
Total loss caused by these fires	\$ 2,962,421.21
Number of claims reported by Insurance Companies where the loss was under \$25.00	11,773
Total amount of these claims	\$ 117,908.34
Number of fires of unknown origin	1,597
Total loss caused by these fires	\$ 3,616,432.06
Number of fires reported	6,176
Fatalities caused by fire during the year	65
Number of persons injured by fire during the year ...	192

Respectfully submitted,


Ernest Lavigne
Fire Commissioner.

CHAPTER IV

RAILWAYS

Report of the Director of Railways

Quebec, June 30th, 1937.

To the Honourable J. S. Bourque,
Minister of Public Works,
QUEBEC.

Sir,

In my capacity as Director of Railways for the Province of Quebec, I have the honour to submit my nineteenth report, for the period from the 30th of June 1936 to the 30th of June 1937.

Following the decisions rendered last year by the Board of Railway Commissioners for Canada regarding the abandonment of operation of certain branch lines of the Canadian National and Canadian Pacific Railways, decisions that have been inserted in last year report, the Town of Nicolet made application for leave to appeal to the Supreme Court of Canada of the order No. 53012, rendered April 15th, 1936, approving the abandonment of operation of that portion of the Canadian National Railways' Nicolet Subdivision between St. Leonard Junction and Nicolet.

This matter was heard on July 14th, 1936, at Nicolet, by the Board of Railway Commissioners for Canada and the following order was rendered on September 8th, 1936:

1.- That the said order No. 53012, dated April 15th, 1936, be, and it is hereby, amended by adding the following paragraph, namely:-

"2.- That local and passenger train service between Nicolet and St. Leonard Junction shall be diverted via St. Gregoire and Aston Junction. Connecting tracks shall be constructed by the Applicants at St. Gregoire and Aston Junction to provide straight-away movements between St. Hyacinthe and Nicolet."

2.- That the applications for rehearing and for leave to appeal to the Supreme Court of Canada be, and they are hereby, refused.

A greater activity seems to manifest itself in the construction of railways for, during the last fiscal year, in virtue of a Federal charter, the Canadian National Railways started the construction of a new branch line from Senneterre to Rouyn.

Mining development in the Northern part of the Province has also justified the Normetal Mining Corporation to apply for the permission to build a tramway line from its mine to Dupuy Station of the Canadian National Railways and said permission was granted, under the Mining Act, at the conditions mentioned in order in council No. 1441 of the 29th of May, 1937.

Moreover, the following companies have also obtained Provincial charters:

The Quebec Western Railway Company (I Geo. VI, ch. 131) for the construction of a line from Mont-Laurier to Amos, with branch line to Maniwaki.

The Temiscamingue and Abitibi Railway Company (I Geo. VI, ch. 133) for the construction of a line from Angliers to Senneterre, via Rouyn and Noranda.

Amendments have also been brought to charters of different railway companies. These modifications are as follows:

By I Geo. VI, ch. 130, the Alma and Jonquieres Railway Company is authorized to change the date of the general annual meeting of its shareholders.

By I Geo. VI, ch. 134, permission is granted to The Sherbrooke Railway and Power Company to reduce its share capital by changing the par value of its shares, owing that the railway system of this company has been discontinued and dismantled.

By I Geo. VI, ch. 132, the rights and powers granted to the Quebec Saguenay and Chibougamau Railway Company are confirmed anew, and an extension for the building of the railway is granted to this company until May 27th, 1937.

The information on the subsidies of all kinds granted or paid to the various railway companies will be found in the following tables of the report for 1928 and previous reports, namely:

Table "A" for the balance available at the Department on the amounts received from the Treasury Department. This table has not been changed and is complete.

Table "B": a) for the money granted to certain companies;
b) for the amounts paid to the 30th of June, 1928;
c) for the amounts remaining to be paid to date;

d) for the subsidies that have lapsed, etc.

The only change in this report is mentioned in the annual report for 1932.

Table "C": a) for land subsidies granted to certain companies;

b) for the amounts paid to the 30th of June, 1928;

c) for the amounts remaining to be paid at the latter date;

d) for the subsidies that have lapsed, etc..

This table has not been changed and, as published in the report for the year 1928, is complete to the 30th of June, 1937.

Table "D", for the land subsidies, non convertible into money, earned by the various railway companies to the 30th of June 1928, on the subsidies granted by the acts 4 Ed. VII, ch. 2, sec. 1; 6 Ed. VII, ch. 4, sec. 1; 8 Ed. VII, ch. 5, sec. 1; 1 Geo V, ch. 2, sec. 1.

This table has not been changed and is complete as published in the report for the year 1928.

Table "E": a) for land subsidies, non convertible into money, granted to certain companies;

b) for the subsidies earned to the 30th of June, 1928;

c) for the subsidies remaining to be earned at the latter date;

d) for the subsidies that have lapsed, etc..

This table has not been changed and is complete to date, as published in 1928.

Table "F" reproduced herewith gives the length of railroad lines in miles constructed and in operation, or ready to be put into operation on the 31st December, 1936.

Respectfully submitted,

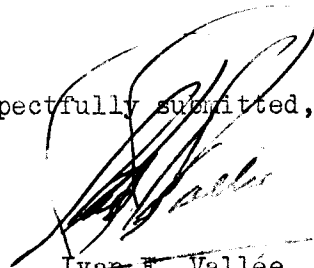

Ivan E. Vallée
Director of Railways.

TABLE "F"

LENGTH OF RAILWAYS BUILT OR IN OPERATION OR READY TO BE OPENED TO TRAFFIC IN
THE PROVINCE OF QUEBEC, TO 30TH OF DECEMBER, 1936.

		Distance in miles	Sub total miles	Total miles	Grand total miles
A) CANADIAN NATIONAL RAILWAYS:					
1.- Canadian Government Railways:					
Intercolonial R'y	From interprovincial boundary near Matapedia to Pointe Levis	292.65			
	Hadlow to Charny	5.77			
	St. Charles to West Jct.	16.73			
	Joffre to Jct with N.E.R. at mile 1.46 Bridge subdivision	1.42			
	Chaudiere to Ste. Rosalie Jct.	115.96			
	St. Leonard Jct to Nicolet	<u>14.70</u>	447.23		
Lotbiniere & Megantic:	Villeroy to Parisville	<u>13.12</u>	13.12		
	Parisville to Deschaillons 3.54 mls. Operation discontinued.				
National Transcontinental Ry:	From interprovincial boundary near Courchesne to Diamond Jct.	199.03			
	Junction with Intercolonial Ry. at mile 1.46 bridge subdivision to Cadorna via Bridge and Cap Rouge	9.79			
	Connection to C.N.Q.R. at Allenby Jct.	0.11			
	Cap Rouge to interprovincial boundary near La Reine	493.31			
	Dombourg to Junction with C.N.Q.R. near Donnacona	5.32			
	Y at Cap Rouge	0.18			
	Taschereau to mile 1.07 Rouyn subdivision	<u>1.07</u>	708.81		
Quebec & Saguenay Ry:	St. Joachim to Cap Tourmente (leased from Q.R.L. & P. Co.)	5.08			
	Cap Tourmente to Nairn Falls	<u>61.71</u>	66.79		
National Transcontinental Branch Lines Co.:	(Leased to Can. Govt. Rys) Mile 1.07 Rouyn subd., near Taschereau to Noranda	<u>42.83</u>	<u>42.83</u>		
Total Can. Govt. Rys				1,278.78	
2.- Canadian National Ry:					
Canadian National Ry:	Kasil to Lac Rémi	2.40			
	La Dore to Dolbeau	25.31			
	Oka Jct. to Calumet Road	<u>4.45</u>	32.16		

TABLE "F" (2)

		Distance in miles	Sub. total miles	Total miles	Grand total miles
Grand Trunk Ry:	From international boundary at Norton to St. Henri East Jct.	129.76			
	Pointe Levis to Hadlow	0.95			
	Charny to Richmond	88.71			
	Victoriaville to Des Ormeaux	35.72			
	West leg of Y at St. Henri	0.34			
	Bonaventure Station, Montreal, to interprovincial boundary at River Beaudette	45.09			
	Connection to C.P.R. at Dorval	0.24			
	Brosseau to International boundary at Fort Covington	61.56			
	St. Lambert to international boundary at Rouse's Point	40.18			
	Connection with C.V. Ry' at St. John's	0.03			
	Hemmingford to St. Isidore Jct.	21.29			
	Y at Cantic	0.24			
	Y at Ayrness	0.22			
	Turcotte to Jacques Cartier Junction	10.77			
	Y at Eastern Junction	0.24			
	From international boundary near East Alburgh to interpro- vincial boundary west of St. Justine (formerly Canada Atlan- tic Ry.)	66.48			
	Ste-Martine Jct to Beauharnois (former Beauharnois Jct. Ry)	<u>5.90</u>	507.72		
Quebec Oriental Ry:	(Formerly Atlantic and Lake Superior Ry) Matapedia to Paspé- biac West	<u>100.09</u>	100.09		
Atlantic Quebec & Western Ry	Paspébiac to Gaspé	<u>102.16</u>	102.16		
Quebec, Montreal & Southern Ry:	Fortierville to St. Gregoire -27.48 miles - operation discontinued				
	St. Gregoire to Pierreville	20.85			
	Y at St. Gregoire	0.28			
	Pierreville to St. Lambert (formerly South Shore Ry)	61.41			
	Bellevue Jct to St. Hyacinthe (formerly United Counties Ry)	31.10			
	Lemoyne to Brodies	<u>0.94</u>	114.58		
Stantead, Shefford & Chambly RR.	(Leased to Can. Nat. Rys)				
	S.S. & C. Jct. to Meigs - 11.38 miles - abandoned				
	Meigs to Waterloo	28.35			
	St. Charles St. to Clough Jct. Granby (See Montreal & Southern Counties Ry)				
	Granby Loop (See Montreal & Southern Counties Ry)	<u> </u>	28.35		

TABLE "F" (3)

		Distance in miles	Sub. total miles	Total miles	Grand total Miles
Montreal & Province Line Ry:	(Leased to Can. Nat. Ry.) M. & S.C. Jct. to St. Cesaire - (See Montreal & Southern Counties Ry) Ste-Angele to Marievalle (See Montreal & Southern Counties Ry) At Farnham - 0.32 mile - abandoned Farnham to Frelighsburg	<u>17.90</u>	<u>17.90</u>	902.96	
3.- Canadian Northern Ry:					
Quebec & Lake St. John Ry	Quebec to Chicoutimi Chambord to Roberval Hotel Jct to Lake Beach Y at Hotel Jct.	227.25 13.32 0.62 <u>0.14</u>	241.33		
James Bay & Eastern Ry:	Roberval to La Dore	<u>18.75</u>	18.75		
St. Charles & Huron River Ry:	Loretteville to Stoneham -9.95 miles - operation discontinued				
Canadian Northern Quebec Ry:	Limoilou to Junction with N.T.R. at Allenby Morency Jct. to Mont Mills -7.05-miles- operation discontinued Junction with N.T.R. near Donnacona to St. Marc St. Prosper to Garneau Grand'Mere to mile 91.66 Grand'Mere subd. Fresniere to Papineau St-Jacques to Rawdon Rinfret to mile 43.22 Montfort Subdivision near St-Sauveur Y at Joliette Y at Rinfret Jct. Intervale to Kasil Grenville to interprovincial boundary	4.90 18.26 17.98 7.79 12.66 9.00 14.95 0.43 0.28 9.07 <u>0.34</u>	95.66		
Chateauguay & Northern Ry:	Joliette to Montreal Paradis to St. Jacques	36.21 <u>6.77</u>	42.98		
Great Northern Ry:	Riviere a Pierre to the junction between former Great Northern Ry and Lower Laurentian Ry n'r Herouxville (formerly Lower Laurentian Ry) Junction between former Great Northern Ry and Lower Laurentian Ry n'r Hérrouxville to Garneau Garneau to Grand'Mere Mile 91.66 Grand'Mere subdivision to Joliette	34.88 5.31 3.76 49.79			

TABLE "F" (4)

	Distance in miles	Sub total miles	Total miles	Grand total miles
Grea Northern Ry (continued) Joliette to Cushing Jct.	61.58			
Mile 43.22 Montfort Subd. near St.Sauveur to Huberdeau (Formerly Montfort Colon. Ry)	<u>30.25</u>	185.57		
Mount Royal Tunnel & Terminal Co: Montreal Tunnel Terminal Sta. to Junction with Can. Nor. Ont. Ry at mile 5.82 Mount Royal Subdivision	<u>5.82</u>	5.82		
Canadian Northern Ontario Ry: Junction with Mount Royal Tunnel & Terminal Co. Ry at mile 5.82 Mount Royal Subd. to Cartierville	2.38			
Val Royal to Grenville	45.99			
Interprovincial boundary at Fitzroy to interprovincial boundary at Portage du Fort	<u>22.30</u>	<u>70.67</u>		
Total Can. Nor. Ry			660.78	
Grand Total Can. National Rys				2,842.52
4.- CENTRAL VERMONT RY: (Controlled by Canadian National Ry and operated as a separate concern)				
Montreal & Vermont Jct. Ry: St. John's to international boundary	<u>25.33</u>			25.33
5.- MONTREAL & SOUTHERN COUNTIES RY:(Electric and controlled by Canadian National Ry and opera- ted as a separate concern)				
Montreal & Southern Counties Ry: Montreal McGill St. to Grey Nuns St.	0.06			
McGill St. to west end Victoria bridge	1.41			
Victoria Bridge	1.33			
East end of Victoria bridge to St. Helen St. Montreal South	2.51			
East End Jct., St. Lambert, to M. & S.C. Jct.	3.25			
St. Cesaire to St. Charles St. Granby	<u>15.33</u>	23.89		
Stantead, Shefford & Chambly RR. (Sub-leased from Can. Nat. Ry)				
St. Charles St. Granby to Clough Jct. Granby	0.33			
Granby Loop	<u>0.13</u>	0.46		
Montreal Province Line Ry: (Sub-leased from Can. Nat. Ry):-				
M. & S.C. Jct. to St-Cesaire	25.21			
Marieville to Ste-Angele	<u>3.49</u>	<u>28.70</u>		
Total of M. & S.C. Railway			53.05	

(1) Note: This mileage is included in the Electric Systems.

TABLE "F" (5)

	Distance in miles	Sub total Miles	Total miles	Grand total miles
B) CANADIAN PACIFIC RAILWAY SYSTEM (C.P.R.):-				
1- Atlantic & North Western Ry: From St. Lawrence River Bridge (South End) to Farnham	35.74			
Brookport to Lennoxville	<u>60.09</u>	95.83		
INTERNATIONAL RY:				
From Lennoxville to the Maine Border	<u>80.95</u>	<u>80.95</u>	176.78	
2- Montreal & Atlantic Ry (formerly South Eastern Ry):				
From the international boundary, near Abercorn, to Farnham West	32.12			
From the international boundary, near Missisquoi, to international boundary at North Troy	10.68			
From Enlaugra to Drummondville	<u>59.21</u>	102.01		
ST LAWRENCE & LAKE CHAMPLAIN JCT RY;				
Stanbridge to St.Guillaume	<u>60.57</u>	<u>60.57</u>	162.58	
3- Joliette & Brandon Ry (formerly Montreal & Lake Maskinonge):				
From the Jct of C.P.R. at St Felix de Valois to St.Gabriel de Brandon	<u>11.15</u>	<u>11.15</u>	11.15	
4- Quebec, Montreal, Ottawa and Occidental:				
From Montreal (Place Viger) to the interprovincial boundary near Broad St., Ottawa	119.20			
St.Jerome Branch (Ste.Therese to St.Jerome)	13.27			
Buckingham Branch (Buckingham Jct to Muckingham village)	<u>4.30</u>	<u>136.77</u>	136.77	
5- Laurentian Ry:	<u>15.17</u>		15.17	
6- St. Eustache Ry:	<u>6.02</u>		6.02	
7- North Shore Ry:	159.76			
Quebec to Stl Martin Jct.				
Extension to deep water embankment Quebec 0.84 mile				
Berthier Branch (Berthier to Berthierville)	2.08			
Piles Branch (Cap de la Madeleine to Grandes Piles)	27.03			
Joliette Branch (Lanoraie to St.Felix de Valois)	<u>16.65</u>		205.52	

TABLE "F" (6)

		Distance in miles	Sub total miles	Total Miles	Grand total miles
8- Ontario, Quebec Railway	Windsor Station to the Ontario boundary	46.68			
	Mile End Switch to St. Lawrence River (including bridge)	8.92			
	Ballantyne to St. Luc. Jct.	2.15			
	Highlands to South Bank Branch terminus	6.03			
	Lasalle Loop at Highlands to Power Jct. on South Bank Branch	4.45			
	Breslay to Outremont	1.29			
	Montreal West to North Jct.	1.08			
	Montreal West to South Jct.	<u>0.96</u>		71.56	
9- Montreal & Ottawa (formerly Vaudreuil & Prescott):	Vaudreuil to interprovincial boundary	21.65			
	Mando to Pointe Fortune	<u>6.80</u>		28.45	
10- Orford Mountain Ry:	Windsor Mills to Eastray	<u>37.33</u>		37.33	
11- Ottawa Northern & Western Ry:	OTTAWA & GATINEAU VALLEY RY:				
	Hull to Maniwaki village	80.85			
	PONTIAC & PACIFIC JCT RY:				
	Interprovincial boundary to Waltham	<u>79.40</u>		160.25	
12- Montreal & Western Ry:	St. Jerome to Labelle	<u>66.93</u>		66.93	
13- Glengarry & Stormont Ry:	Soulanges to interprovincial boundary	<u>4.72</u>		4.72	
14- Lake Temiscamingue Colonization Ry:	From interprovincial boundary at Mattawa to Kipawa	44.79			
	Grimmer to Temiskaming Wharf	<u>1.54</u>		46.33	
15- Interprovincial & James Bay Ry:	From Gendreau to Angliers	69.05			
	Ville-Marie Branch (Gaboury to Ville-Marie)	<u>7.65</u>		76.70	
16- Cap de la Madeleine Ry:	From Jct of C.P.R. at Cap de la Madeleine, to Village of Cap de la Madeleine	<u>2.44</u>		2.44	
	(Exclusive of Wayagamack branch, 1.85 miles on Belle Rive Island)				
17- Le Chemin de Fer de Colonisation du Nord:	Labelle to Mont-Laurier	<u>58.17</u>		58.17	

TABLE "F" (7)

		Distance in miles	Sub total miles	Total miles	Grand total miles
18- St. Maurice Valley Ry:	Three Rivers to Grand'Mere	<u>27.27</u>		27.27	
19- Canadian Pacific Ry:	Staynerville to Staynerville Quarries	3.85			
	Three Rivers Loop	3.28			
	Wolfe's Cove Branch (Cadorna to Wolfe's Cove wharf)	<u>1.51</u>		8.64	
20- Hereford Ry:	Cookshire to Malvina	<u>22.96</u>		22.96	
21- Quebec Central Ry: (operated as a separate organization):-					
	Main line (Sherbrooke to Diamond Junction)	129.63			
	Megantic Branch (Tring Jct. to Megantic)	59.20			
	Chaudiere Branch (Valley Jct. to Lac Frontiere)	79.14			
	Levis Branch (Scott Jct. to Harlaka Jct. on C.N.R.)	<u>27.49</u>	295.46		
	BOSTON & MAINE RAILROAD; MASSAWIPPI VALLEY RY:- (Leased since 1st June 1926, to Quebec Central Ry and operated by this company). (Passumpsic Division). From Jct with Grand Trunk (C.N.R.) at Lennoxville to international boundary near Beebe Jct. Stantead Branch (Beebe Jct. to Stantead)	31.96 <u>4.08</u>	<u>36.04</u>	<u>331.50</u>	
	Grand total C.P.R.....				1,657.24
C) NAPIERVILLE JCT. RY:	From border line at Rouse's Point N.Y. to Delson Jct.	<u>27.15</u>			27.15
D) CANADA & GULF TERMINAL RY: (former Matane & Gaspé)					
	Mont-Joli to Matane	35.80			
	Matane to Hammermill (extension)	<u>2.30</u>			38.10
E) TEMISCOUATA RY:	Riviere du Loup to the New Brunswick Boundary	<u>69.28</u>			69.28
F) NEW YORK CENTRAL - ST. LAWRENCE & ADIRONDACK RY:					
	From Jct with Canada Atlantic (C.N.R.) near Valleyfield to the border line in the direction of Malone N.Y. Valleyfield to Adirondack Jct.	20.05 <u>26.52</u>			46.57
G) WALLACE SANDSTONE QUARRIES LTD (Philipsburg Junction & Quarries Ry)					
	From Jct. with Central Vermont at Stanbridge to Philipsburg	<u>7.00</u>			7.00

TABLE "F" (8)

		Distance in miles	Sub total miles	Total miles	Grand total miles
H) GULF PULP & PAPER COMPANY	(Formerly North Shore Power Railway & Navigation Co.) From Baie des Sept-Iles to Clarke City	<u>9.00</u>			9.00
I) THE ROBERVAL & SAGUENAY RAILWAY COMPANY (Old Ha! Ha! Bay Railway):-					
	Passenger Sta. Arvida to Port Alfred (main line)	20.27			
	Deschenes River to Racine (extension)	3.47			
	Passenger Sta. Arvida to Kenogami (extension)	3.2			
	La Brosse Jct to Chicoutimi le Bassin (branch)				
	3.3 miles O operation discontinued.				
	Laterriere Jct to Laterriere (branch)				
	6.6 miles operation discontinued.				
	Laterriere to Portage des Roches (branch)				
	5.4 miles operation discontinued.				
	Port Alfred to St-Alexis de Grande Baie (branch)	1.2			
	Port Alfred to Bagotville (branch)	<u>.9</u>			29.04
J) ALMA & JONQUIERE RAILWAY:	From the Saguenay Power Jct with C.N.R. near Hébert-ville to Ile Maligne	<u>10.30</u>			10.30
K) NIPISSING CENTRAL RY (T.& N.O.):	From Ontario boundary to Noranda	<u>26.67</u>			26.67
L) ASBESTOS & DANVILLE RY:	From Danville to Asbestos (4.6 miles) operated as factory branch.				
M) PONTIAC & RENFREW RY	From Wiman on the Pontiac & Pacific Jct. Ry to the Bristol Company's mines (5 miles) line abandoned, rails removed.				
N) OTTAWA VALLEY RAILWAY:	Lachute to St. André (6.74 miles) line abandoned.				
O) CARILLON & GRENVILLE RY:	Carillon to Grenville (12.75 miles) line abandoned.				
P) NEW ROCKLAND SLATE CO. RY:	From the Jct. with Grand Trunk to the New Rockland quarries (4.12 miles) line abandoned.				
Q) HEREFORD RAILWAY:	(Formerly operated by Maine Central Ry, purchased by C.P.R.) Cookshire to Malvina 22.48 miles operated by C.P.R. Malvina to Cummings Mills (11.85 miles) rails removed and right of way for sale. Cookshire to Brookbury (about 10 miles) rails removed road sold by Bury Township. Brookbury to Dudswell (about 4 miles) leased to a lumber merchant.				

TABLE "F" (9)


Dudswell to Lime Ridge (about 3.85 miles) leased for industrial operation.

GRAND TOTAL STEAM RAILWAYS..... 4,788.20

ELECTRIC RAILWAYS:

			Distance in miles	Sub total miles	Total miles	Grand total miles
a) Montreal & Southern Counties Railway (controlled and operated by C.N.R.)						53.05
b) Quebec Ry. Light & Power Co.:	Montmorency Division (former Quebec, Montmorency & Charlevoix)					
	Quebec to St-Joachim		30.83			
	Steam trains are also run on this division.					
	Quebec Division:					
	Tramway lines within the limits of the City of Quebec		28.15			
	Tramway lines within the limits of the county of Quebec		<u>9.99</u>		68.97	
c) Montreal Tramways Co.:	Main line, single track,		274.512			
	Sidings	3.384 miles				
	Branches	1.267 "				
	Car Barns	<u>22.706</u> "	<u>27.357</u>		301.869	
d) Levis Tramways Co. (formerly Levis County)			<u>11.50</u>		11.50	
e) Shawinigan Falls Terminal:	Main line owned	.3608				
	Right of way	<u>3.0249</u>	3.3857			
	Sidings owned	<u>1.3565</u>				
	Right of way	<u>7.0237</u>	<u>8.3802</u>		11.7659	11.7659
f) Three Rivers Traction Co.:	(7.65) line abandoned					
g) The Hull Electric Co.	(Interprovincial boundary to Aylmer, 12 miles, acquired by the International Paper Co.)		13.61		13.61	
h) Sherbrooke Ry & Power Co.	(11.286) line abandoned					<u>407.7149</u>
	Total for electric railways					460.7649
	Grand total for all railways					5,248.9649

Department of Public Works,
Quebec, June 30th, 1937


Director of Railways.

CHAPTER V
TOLL BRIDGES AND TURNPIKE ROADS

Report of the Director

Quebec, June 30th, 1937.

To the Honourable J. S. Bourque,
Minister of Public Works,
QUEBEC.

Sir,

I have the honour to submit my annual report in my capacity as Director of Toll Bridges and Turnpike Roads, for the year 1936-37.

ABOLITION OF TOLLS

Allow me, as in previous years, to refer you to my preceding reports and particularly to that of 1925, where I gave all the required information concerning toll bridges and turnpike roads on which tolls have been abolished to date.

I must add that no turnpike roads exist in the Province.

TOLL BRIDGES

Ten of the toll bridges in this Province are operated by the Province of Quebec, nine being its property. They are:

Taschereau bridge between Vaudreuil and Perrot Island;
Galipeault bridge between Ste. Anne de Bellevue and Perrot Island;
Batiscan bridge, at Batiscan, on the Quebec-Montreal highway;
Yamaska bridge, between Yamaska-East and Yamaska-West;
David Laperriere bridge, between St-François du Lac and Pierreville;
Turcotte bridge between Sorel and St-Joseph de Sorel;
Chicoutimi bridge between Ste-Anne and Chicoutimi;
Mgr Ross bridge between Gaspé Village and Gaspé Harbour;
Island of Orleans bridge between Montmorency village and Island of Orleans;
Quebec bridge (belongs to the Dominion Government and a vehicular roadway has been built thereon under a contract between the Dominion and the Quebec Governments).

TOLL ON BRIDGES

The tolls on the bridges operated by the Province were established by acts passed by the Legislature.

Nevertheless, I must here point out the modifications which have been made to certain tariff of tolls in the course of the present year:

Taschereau and Galipeault bridges: By order in council No. 1373, of May 19th, 1937, the privilege of a special pass on these bridges, at

\$5.00 per calendar year, has been granted to the taxpayers, owners of automobiles and trucks, residing in the counties of Vaudreuil and Soulanges.

Mgr. Ross bridge: By order in council No 2431, of September 9th, 1936, the following modifications have been made to the tariff of tolls:

1.- The booklet of 50 tickets for \$5.00 will be good on this bridge as on the other bridges, property of the Province;

2.- Passengers, pedestrians, animal drawn vehicles and unharnessed animals have been exempted from toll;

3.- The sale of special booklet of tickets for trucks has been authorized as follows:

- a) 10 tickets for \$2.00 good for trucks for which toll is actually \$0.25 per trip, that is to say trucks of one ton or less;
- b) 10 tickets for \$3.25 good for trucks for which toll is actually \$0.40 per trip, that is to say trucks of two tons or less;
- c) 10 tickets for \$5.00 good for trucks for which toll is actually \$0.60 per trip, that is to say trucks of four tons or less.

I believe it interesting to give an extract of the tariff on each of our toll bridges at the 30th of June, 1937:

BATISCAN BRIDGE
(tariff)

Automobiles and autobusses	\$ 0.50
Trucks or tractors50
Trailers10
Motorcycles, with side-car15
Motorcycles, without side-car10

Ten trip booklets for \$2.50 and 50 trip booklets for \$7.50 are sold to owners of passengers automobiles, trucks or tractors.

All owners of passenger automobiles have the privilege of a free return trip, if made the same day.

QUEBEC AND ISLAND OF ORLEANS BRIDGES
(tariff)

Motorcycles, without side-car	\$ 0.10
Motorcycles, with side-car	0.15
Automobiles50
Trailers, except those hauled by a vehicle belonging to a farmer	.25
Trucks of 2 tons or less50
Trucks having F.M. Quebec license (this year B-Quebec)50
Trucks of more than two tons, towing cars and tractors60
Autobusses for less than 16 passengers50
Autobusses for over 16 passengers50

Ten trip booklets for \$2.50 are sold to owners of passenger automobiles, trucks of two tons and less, trucks having F.M. Quebec license (this year B-Quebec) and autobusses for less than 16 passengers.

The privilege of a free return trip, if made the same day, is granted to passenger automobiles, motorcycles, trucks having F.M. Quebec licen-

CHAPTER V (page 3)

se (this year B-Quebec) and autobusses with a capacity not exceeding sixteen passengers.

TASCHEREAU, GALIPEAULT, YAMASKA, TURCOTTE AND DAVID LAPERRIERE BRIDGES (tariff)

Tolls on those five bridges are the same. In consequence, I am giving the tariff in force on these five bridges.

Automobiles	\$ 0.25
Tractors	0.20
Motorcycles	0.15
Autobusses	0.60

TRUCKS:

Capacity of 1 ton or less	0.25
Capacity of more than 1 ton and less than 2 tons	0.40
Capacity of more than 2 tons and less than 4 tons	0.60
Capacity of more than 4 tons and less than 5 tons	0.90

TRAILERS:

Capacity of 1 ton or less	0.20
Capacity of more than 1 ton and less than 2 tons	0.30
Capacity of more than 2 tons and less than 4 tons	0.45
Capacity of more than 4 tons and less than 5 tons	0.70

Ten trip booklets for \$2.00 and 20 trip booklets for \$3.00 are sold to owners of passenger automobiles. These tickets are good on any of these bridges.

Similar trip cards, at fixed price and for the same number of trips, are also issued to owners of trucks not exceeding two ton capacity and having a Quebec license.

CHICOUTIMI BRIDGE (tariff)

Automobiles	\$ 0.50
Autobusses	0.60

TRUCKS:

Capacity of 2 tons or less	0.50
From 2 to 4 ton capacity	0.70
4 and not over 5 ton capacity	0.90

TRAILERS:

Capacity of 2 tons or less	0.30
Over 2 ton and not over 4 ton capacity	0.50
Over 4 ton and not over 5 ton capacity	0.70

Twenty trip booklets for \$7.00 and 50 trip booklets for \$12.50 are sold to owners of automobiles or trucks of not over 2 tons.

MGR ROSS BRIDGE (tariff)

Automobiles	\$ 0.25
Motorcycles	0.15
Autobusses	0.50
Trucks temporarily or permanently altered for conveyance of passengers.....	0.50

TRUCKS: 1 ton or less	0.25
2 tons or less	0.40
4 tons or less	0.60
5 tons or less	0.90
6 tons or less	1.00
7 tons or less	1.25
Over 7 tons	1.50

Any other vehicle not specially included in this tariff	0.25
---	------

TRAILERS: 1 ton or less	\$ 0.25
2 tons or less	0.40
4 tons or less	0.50
5 tons or less	0.75

The following booklets are sold for trucks:

- a) 10 tickets for \$2.00 good for trucks for which toll is actually \$0.25, that is to say trucks of one ton or less;
- b) 10 tickets for \$3.25 good for trucks for which toll is actually \$0.40, that is to say trucks of two tons or less;
- c) 10 tickets for \$5.00 good for trucks for which toll is actually \$0.60, that is to say trucks of four tons or less.

SPECIAL TARIFF

A \$1.00 ticket is issued in favour of the public travelling from Quebec to Montreal and vice versa, via south shore, good on the four bridges, Quebec, David Laperrriere, Yamaska and Turcotte, or a \$0.75 ticket good on three of these bridges, at the traveller's choice.

Fifty trip booklets for \$5.00 are sold for passenger automobiles, good on all toll bridges operated by the Province. Such tickets do not entitle to a free return trip the same day as do certain tickets sold on bridges where this privilege is granted.

Autobus owners can also benefit of a reduced rate by obtaining the hundred trip booklet for \$45.00, good on all the bridges operated by the Province and for autobusses of any capacity.

A special pass on Taschereau and Galipeault bridges, at \$5.00 per calendar year, is sold to taxpayers, owners of automobiles or trucks, residing in the counties of Vaudreuil and Soulanges.

GENERAL REMARKS

Tolls were collected throughout the year on the Quebec, Taschereau, Galipeault, Chicoutimi and Sorel bridges. On the other bridges, the collection was interrupted during the following period: David Laperrriere bridge, from February 11th to April 16th; Yamaska bridge, from February 10th to April 12th; Batiscan bridge, from January 30th to April 15th; Island of Orleans bridge, from February 1st to February 21st; Mgr Ross bridge, from January 22nd to March 5th, 1937.

OTHER TOLL BRIDGES

Besides the bridges belonging to the Government, there are a few toll bridges in the Province belonging to private corporations. We mention only those in which the government is interested and on which the tolls are subject to the approval of the Lieutenant-Governor in Council.

JACQUES CARTIER BRIDGE

This bridge connecting the City of Montreal with south shore of the St. Lawrence River, at Longueuil, belongs to the Montreal Harbour Commissioners, and the Quebec Government contributes towards payment of the annual deficit.

GRAND'MERE BRIDGE

This bridge is the property of the Corporation of the City of Grand'Mere and the Government contributes towards payment of annual deficit.

HONORE MERCIER BRIDGE

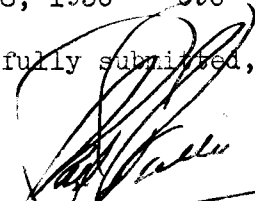
This bridge, erected over the St-Lawrence River, between Ville Lasalle and Caughnawaga, is administered by the Corporation du Pont du Lac St-Louis, and the Quebec Government guarantees payment of the annual deficits.

NAVIGATION

For navigation purposes, some toll bridges of the Government of the Province have movable spans. During the season of navigation 1936, these were opened for the passage of boats, as follows:

	Number of openings			
	Opened for		Day	Night
	First time	Last time	7 a.m. to 7 p.m.	7 p.m. to 7 a.m.
Batiscan bridge	June 5, 1936	June 5, 1936	1	0
Turcotte bridge, Sorel	March 24, 1936	Dec. 15 1936	204	92
Yamaska bridge	0	0
Chicoutimi bridge	Apr. 7, 1936	Nov. 25, 1936	84	24
Mgr Ross bridge, Gaspe	Apr. 24, 1936	Dec. 8, 1936	696	279

Respectfully submitted,



Ivan E. Vallée
Director of Toll Bridges and
Turnpike Roads.

CHAPTER VI
INSURANCE OF PUBLIC BUILDINGS IN GENERAL,
COURT HOUSES AND GAOLS

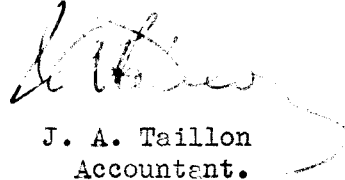
Quebec, June 30th, 1937.

To the Honourable J. S. Bourque,
Minister of Public Works,
QUEBEC.

Sir,

Fire insurances withheld by the Government on the different public buildings in general, court houses and gaols, a table of which was published in last year report, have all been cancelled on the 1st of September, 1936.

Respectfully submitted,


J. A. Taillon
Accountant.

CHAPTER VII

REVENUES AND EXPENSES

Accountant's Report

Statement of Revenues from 1st July, 1936, to 30th June, 1937.

REVENUES

Taxes and Licenses:

Fire Prevention Act, R.S.Q. 1925, c. 180: $\frac{1}{4}$ of 1%
of fire insurance premiums \$ 26,571.48

Toll Bridges (operating cost deducted):

Batiscan	\$ 57,842.41	
Taschereau	81,132.18	
Galipeault	83,914.11	
Québec	20,916.86	
St-François	1,830.29	
Yamaska	3,608.16	
Sorel	7,003.08	
Chicoutimi	2,355.86	
Gaspé	4,228.45	
Ile d'Orléans	<u>6,496.37</u>	269,332.77

Sale of Material, etc. :

Sundry 738.09

Rents:

Real Estate, Conroy and St. Amable Sts.
Québec 520.00

Chateau Frontenac, Quebec:

Rent of ground to Chateau Frontenac Com-
pany from January 1st, 1936 to January
1st, 1937 760.60

Montreal Tramways Company:

Right of way on Bordeaux gaol farm from
September 15th, 1936, to September 15th
1937 100.00

Bell Telephone Company:

Pole rights on Bordeaux Gaol farm from
November 7th 1935 to November 7th 1936 55.00

Bell Telephone Company:

Rent for attaching cable to Montmorency
bridge from December 1st, 1936 to Novem-
ber 30th, 1937 1.00

Bell Telephone Company of Canada:

Rent for sub-marine cable to Batiscan
bridge from 1st January 1937 to 31st
December 1937 10.00

Bell Telephone Company of Canada:

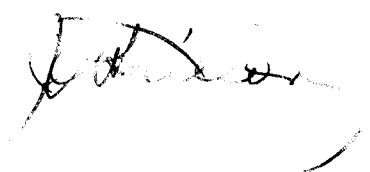
Rent for attaching cable to bridge over
St. Francis river, between village of St.
François du Lac and Pierreville, from
1st January 1937 to 31st December 1937 10.00

1,456.60	296,642.34
----------	------------

Chapter VII (page 2)

Reported	1,456.60	296,642.34
Bell Telephone Company of Canada:		
Rent for attaching cable to bridge over Gatineau River, between Pointe-Gatineau and Hull, from January 1st 1937 to December 31st, 1937	1.00	
Compagnie de Téléphone de Yamaska:		
Rent for cable attachement to river St. Francis bridge, between St. François du Lac and Pierreville, to 2nd January, 1937	10.00	
City of Montreal:		
Rent of ground between Court House and City Hall, opposite Nelson Monument, to 30th of June, 1936	1.00	
City of St. Hyacinthe:		
Rent of ground near Court House to 1st May 1937 (2 years).....	2.00	
Quebec Lawn Tennis Club:		
Rent of ground near St. Louis Gate to June 30th, 1937 (2 years)	2.00	
P. J. A. Cardin:		
Right of way near Court House at Sorel to 1st of May, 1937	5.00	
Williams Thomas Limited:		
Rent of ground space near Sorel bridge from May 15th 1936 to 31st May, 1938	<u>51.04</u>	1,528.64
Divers:		
Casual revenue		<u>12,455.70</u>
Total.....	\$	<u><u>310,626.68</u></u>
Department of Public Works,		
Quebec, June 30th, 1937.		

J. A. Taillon,
Accountant.



Statement of expenditures from 1st July, 1936, to 30th June, 1937.

BUDGET EXPENDITURES

Maintenance of Public Buildings:

Maintenance of Legislative and Departmental Buildings	395,733.65	
Spencer Wood.....	63,331.84	
Parliament Green Houses	31,617.39	
Cafe, Parliament Buildings	5,354.20	
Workmen's Compensation Commission Building, Quebec	585.12	
Domestic Arts School, Quebec	239.92	
Provincial Museum	17,358.38	
Agricultural Building	30,682.50	
Central Building, St. Augustin St.	34,964.80	579,867.80
Cleaning	117,964.52	
Water rates on Government Buildings	21,655.59	
Inspections and explorations	24,099.53	
Post Office, Parliament Buildings, Quebec .	5,760.33	
Normal Schools, repairs and maintenance ...	3,241.02	
Highway bridges	444,066.88	
Maintenance of Government offices, Montreal	54,975.09	
Fire Protection Act	215,527.25	
Abolition of toll gates, City of Three Rivers (5 Geo.V, ch. 10)	4,583.33	891,871.54
Toll bridges, maintenance		32,399.24

Court Houses and Gaols, maintenance and repairs:

<u>District</u>	<u>County Seat</u>		
Magdalen Islands	Anherst	1,485.00	
Abitibi	Amos	1,385.25	
Arthabaska	Arthabaska	638.24	
Beauce	St. Joseph	163.70	
Pontiac	Campbell's Bay	193.55	
Chicoutimi	Chicoutimi	1,153.80	
Hull	Hull	806.77	
Joliette	Joliette	419.50	
Saguenay	La Malbaie	944.71	
Montcalm	Mont-Laurier	272.33	
Montmagny	Montmagny	556.67	
Montreal	Montreal Court House	32,071.35	
Montreal	" Morgue	1,235.88	
Gaspe	New Carlisle	94.30	
Nicolet	Nicolet	247.00	
Gaspe	Perce	102.33	
Quebec	Quebec Court House	12,158.06	
Rimouski	Rimouski	294.61	
Kamouraska	Riviere du Loup	1,023.02	
Roberval	Roberval	680.08	
St. François	Sherbrooke Court House	7,943.52	
Richelieu	Sorel	306.35	
Bedford	Sweetsburg	257.86	
Gaspe	Ste. Anne des Monts	-----	
St. Hyacinthe	St. Hyacinthe	342.48	
Iberville	St. John	23.95	
Terrebonne	St. Jerome	477.87	
Terrebonne	Ste. Scholastique	1,500.00	
Trois-Rivières	Trois-Rivieres Court House	1,660.20	
Beauharnois	Valleyfield	30.00	
Pontiac	Ville-Marie	630.94	
		69,154.32	1,504,138.58

Chapter VII (page 4)

	69,154.32	1,504,138.58
Montreal Gaol	10,769.35	
Quebec Gaol (men)	5,918.15	
Quebec Gaol (women)	4,865.98	
Sherbrooke Gaol	795.55	
Trois-Rivieres Gaol	<u>218.95</u>	91,722.30
Lawyer fees re accidents		<u>452.50</u>
Total	\$	1,596,313.38

STATUTORY EXPENDITURES

Subsidies re:		
Montreal-Longueuil bridge	150,000.00	
Bridge at Grand'Mere, St. Maurice River	5,648.66	
Honore Mercier Bridge at Caughnawaga	<u>27,508.69</u>	183,157.35
Construction:		
Large bridges		2,132.33
Furnishing:		
Quebec Court House		7.55
Property of the Workmen's Compensation Commission:		
Interest	813.71	
Sinking Fund	<u>916.69</u>	<u>1,730.40</u>
Total	\$	187,027.63

Department of Public Works,

Quebec, June 30th, 1937.



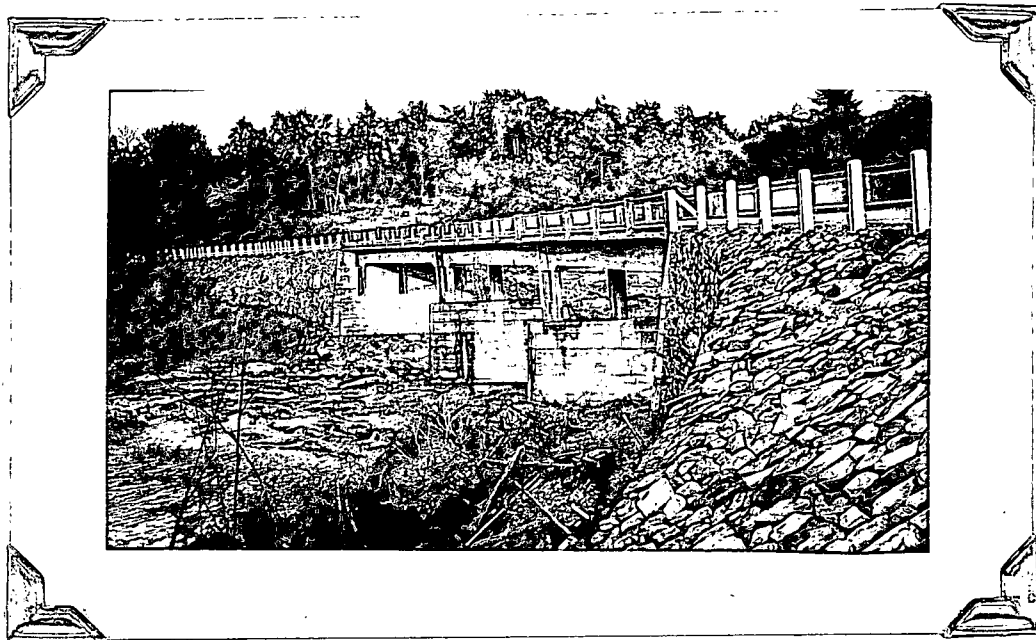
J. A. Taillon
Accountant.

DEPARTMENT OF PUBLIC WORKS

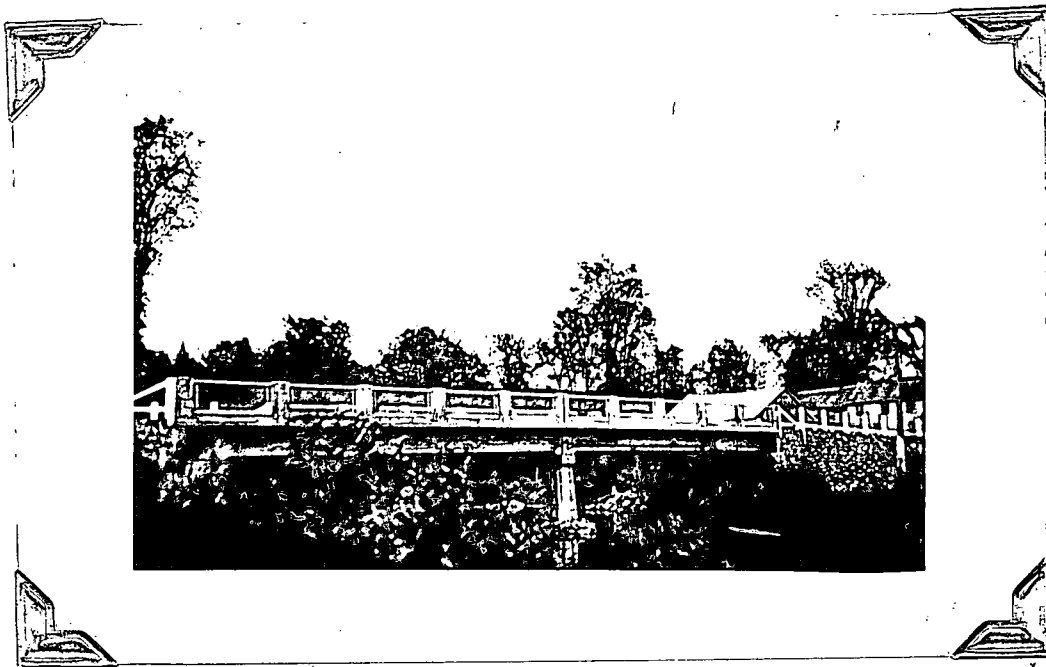
Province of Quebec

ANNUAL REPORT

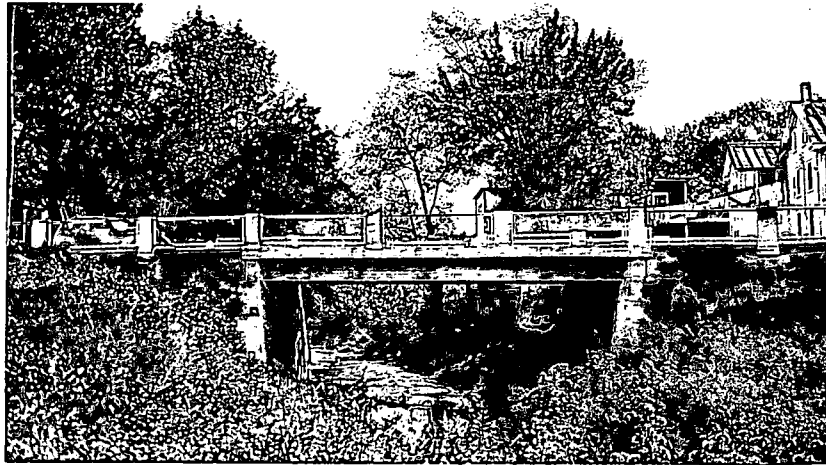
30th June 1937



BRIDGE OVER RIVER AUX SAUMONS IN THE TOWNSHIP OF LINGWICK, (GOULD), COMPTON COUNTY. (BEAUCEVILLE-SHERBROOKE HIGHWAY).- This bridge has a total length of 210 ft. divided in three reinforced concrete spans each of which constitutes a rigid frame. Width of roadway 24 ft. Built in 1936.



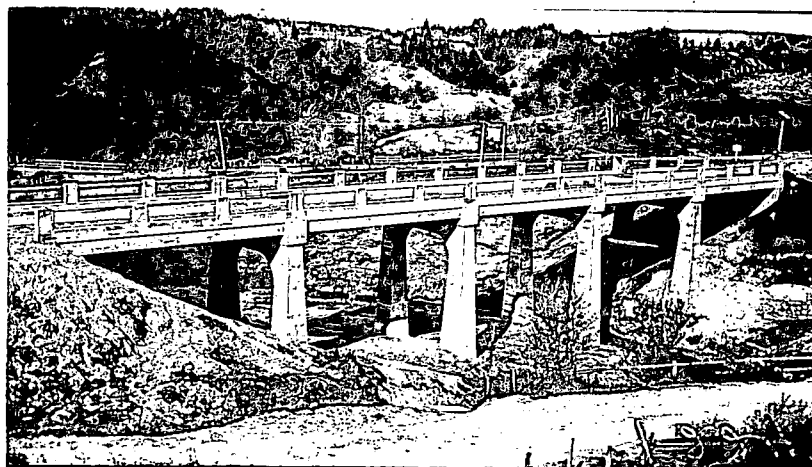
BRIDGE OVER BLACK RIVER AT ULVERTON, (TOWNSHIP OF DURHAM), DRUMMOND COUNTY. (RICHMOND-DRUMMONDVILLE HIGHWAY).- Two spans forming a total length of 84 ft. 5-3/4 in. Reinforced concrete beams and slab on concrete substructure. Width of roadway 24 ft. Built in 1936.



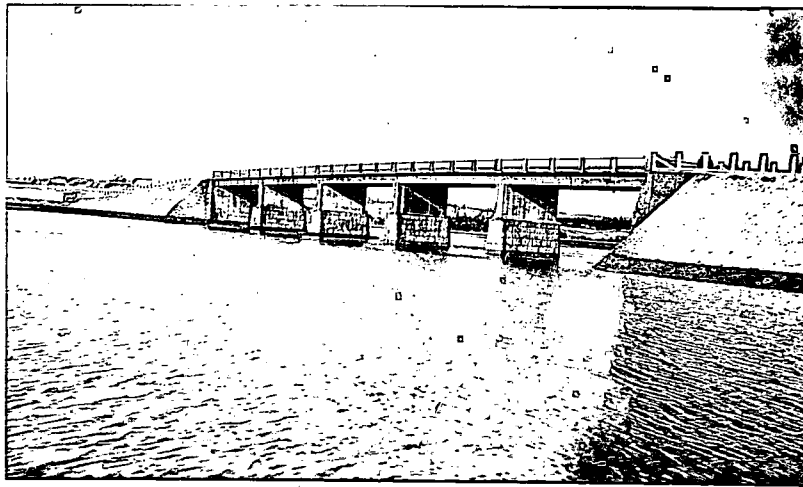
BRIDGE OVER PETITE RIVIERE DU LOUP IN THE TOWN OF LOUISEVILLE, MASKINONGE COUNTY. (TRANS-CANADA HIGHWAY).- One 41 ft. span. Reinforced concrete beams and slab resting on concrete substructure. Width of roadway 27 ft. Two 4 ft. 6 in. sidewalks. Built in 1936.



BRIDGE OVER BULLSTRODE RIVER AT HALIFAX NORD, (STE-SOPHIE), MEGANTIC COUNTY. (STE-SOPHIE-PRINCEVILLE HIGHWAY).- Two spans forming a total length of 103 ft. 6 in. Reinforced concrete beams and slab on concrete substructure. Width of roadway 24 ft. Built in 1936.



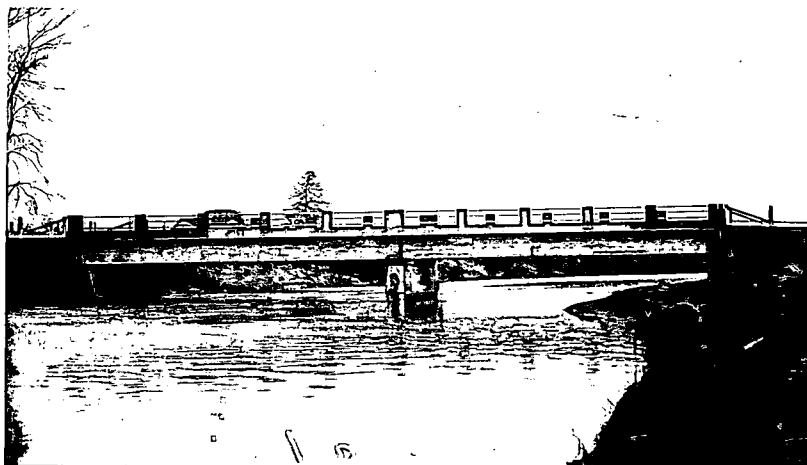
BRIDGE OVER BRANCH OF GRONDINES RIVER AT ST.UBALD, PORTNEUF COUNTY.- Total length 197 ft. Five reinforced concrete beam and slab spans resting on two concrete abutments and four reinforced concrete bents. Width of roadway 20 ft. Built in 1936.



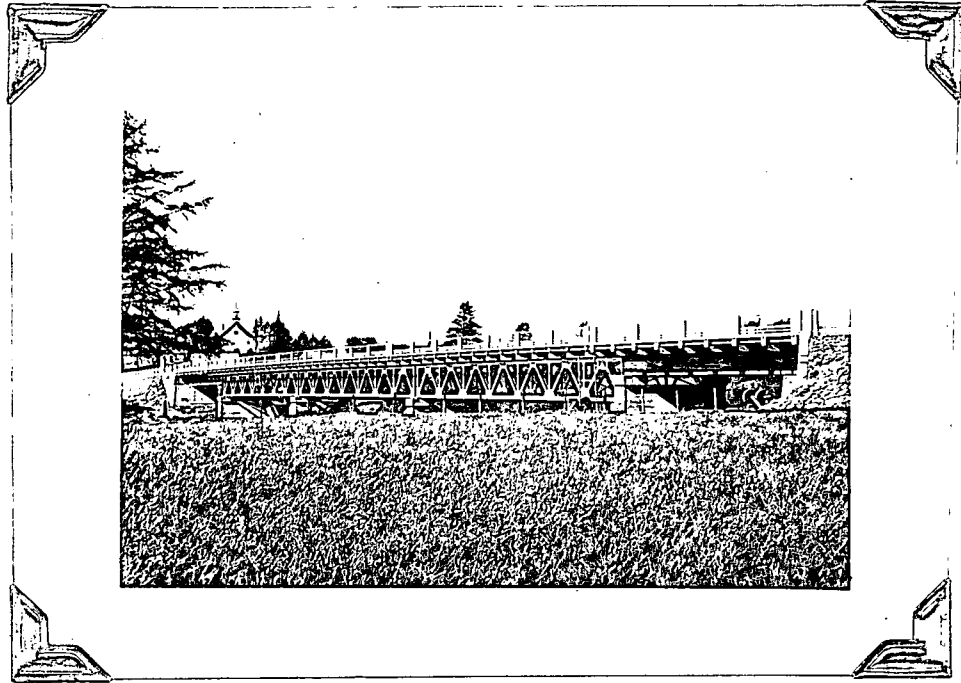
BRIDGE OVER PETITE CASCAPEDIA RIVER AT NEW RICHMOND, BONAVENTURE COUNTY. (MATAPEDIA-GASPE HIGHWAY).- Total length 308 ft. Five reinforced concrete beam and slab spans resting on two concrete abutments and four concrete piers with granite facing. Width of roadway 20 ft. Built in 1936.



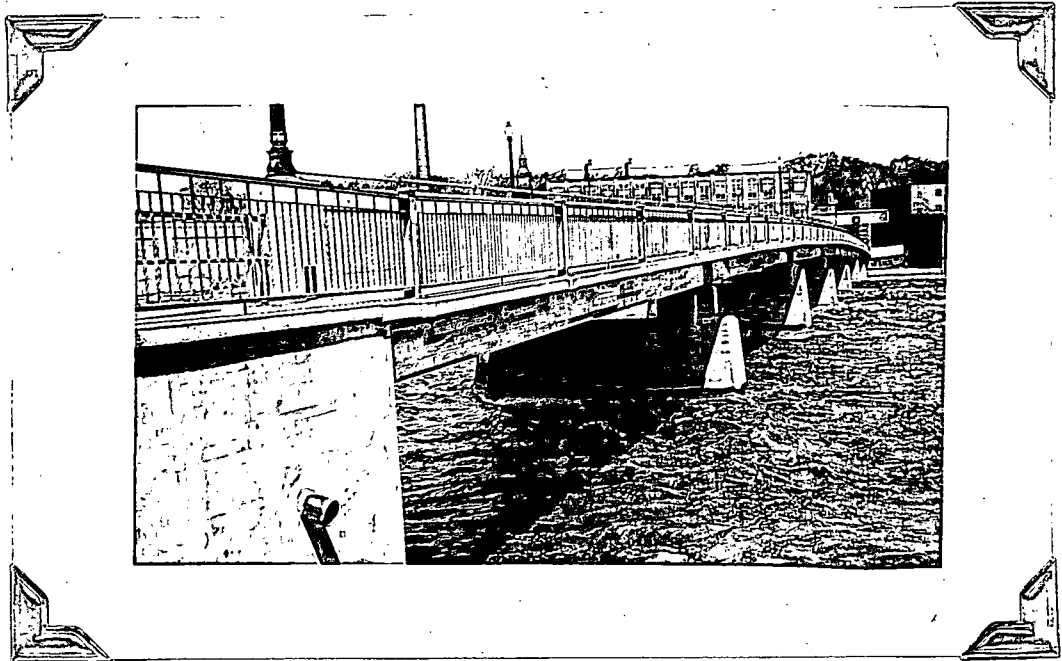
DENIS BRIDGE OVER CAP ROUGE RIVER AT L'ANCIENNE LORETTE, QUEBEC COUNTY. (CAP ROUGE-CHAMPIGNY HIGHWAY).- One 60 ft. span. Reinforced concrete beams and slab on concrete substructure. Width of roadway 20 ft. Built in 1936.



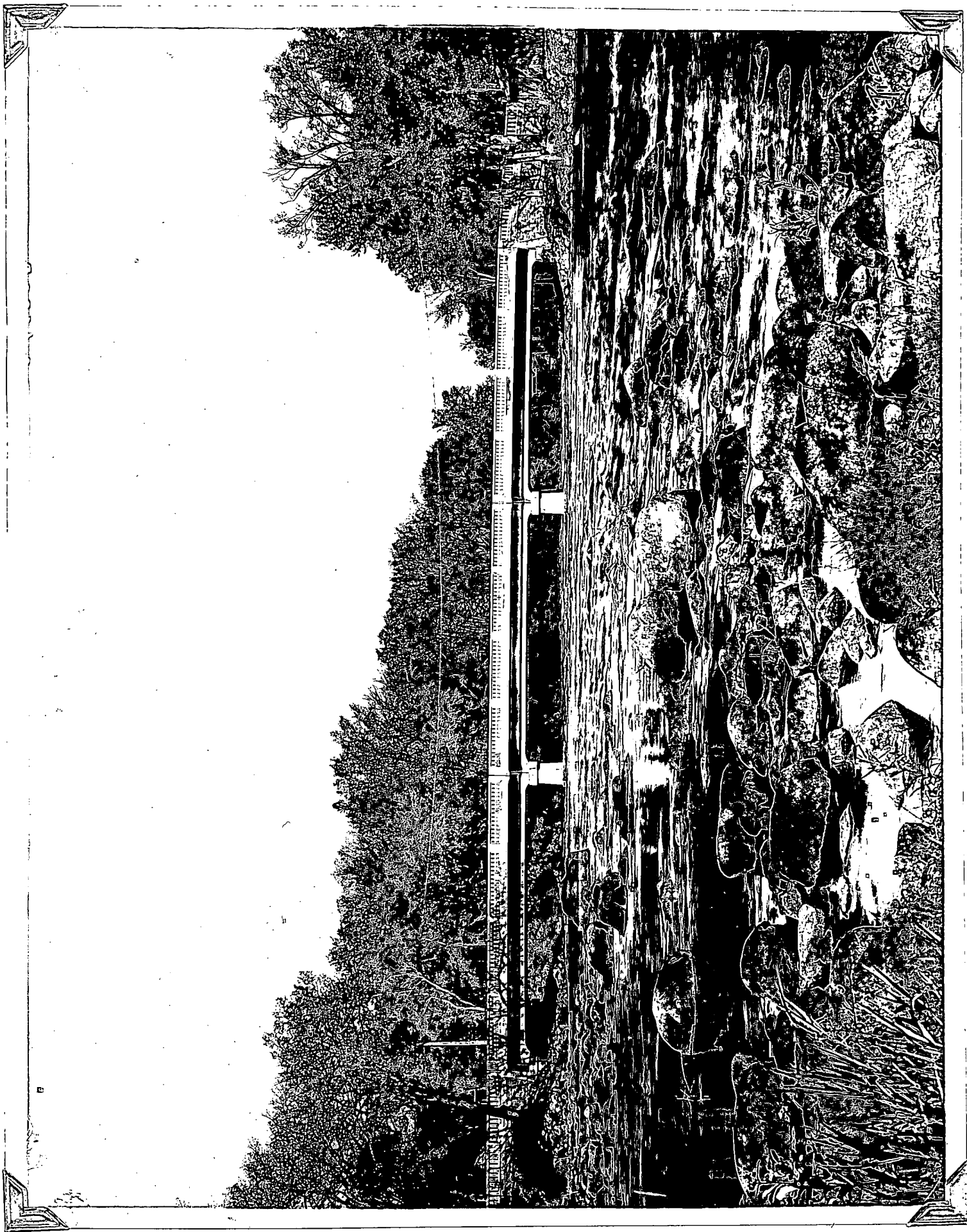
BRIDGE OVER NORTH BRANCH OF THE YAMASKA RIVER AT ST. ALPHONSE DE GRANBY, RANGE 3, SHEFFORD COUNTY.- Two spans forming a total length of 114 ft. 2-5/8 in. Reinforced concrete beams and slab on concrete substructure. Width of roadway 18 ft. Built in 1936.



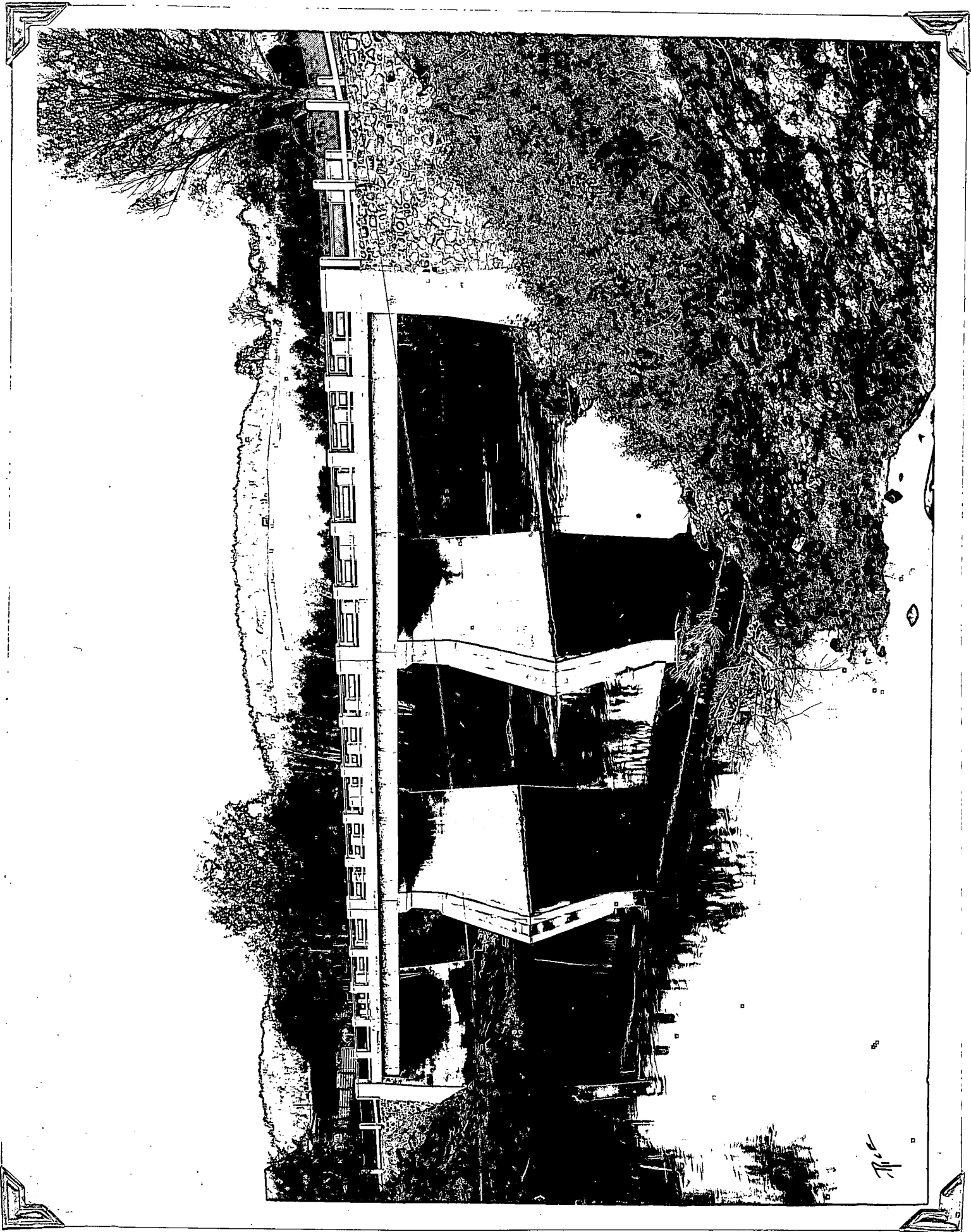
BRIDGE OVER ST.FRANCIS RIVER AT ASCOT CORNER, SHERBROOKE COUNTY... (BEAUCEVILLE-SHERBROOKE HIGHWAY).- Total length 418 ft. Three 100 ft. 6 in. steel spans and two 58 ft. 6 in. reinforced concrete approach spans resting on concrete substructure. Width of roadway 24 ft. One 4 ft. 6 in. sidewalk. Built in 1936.



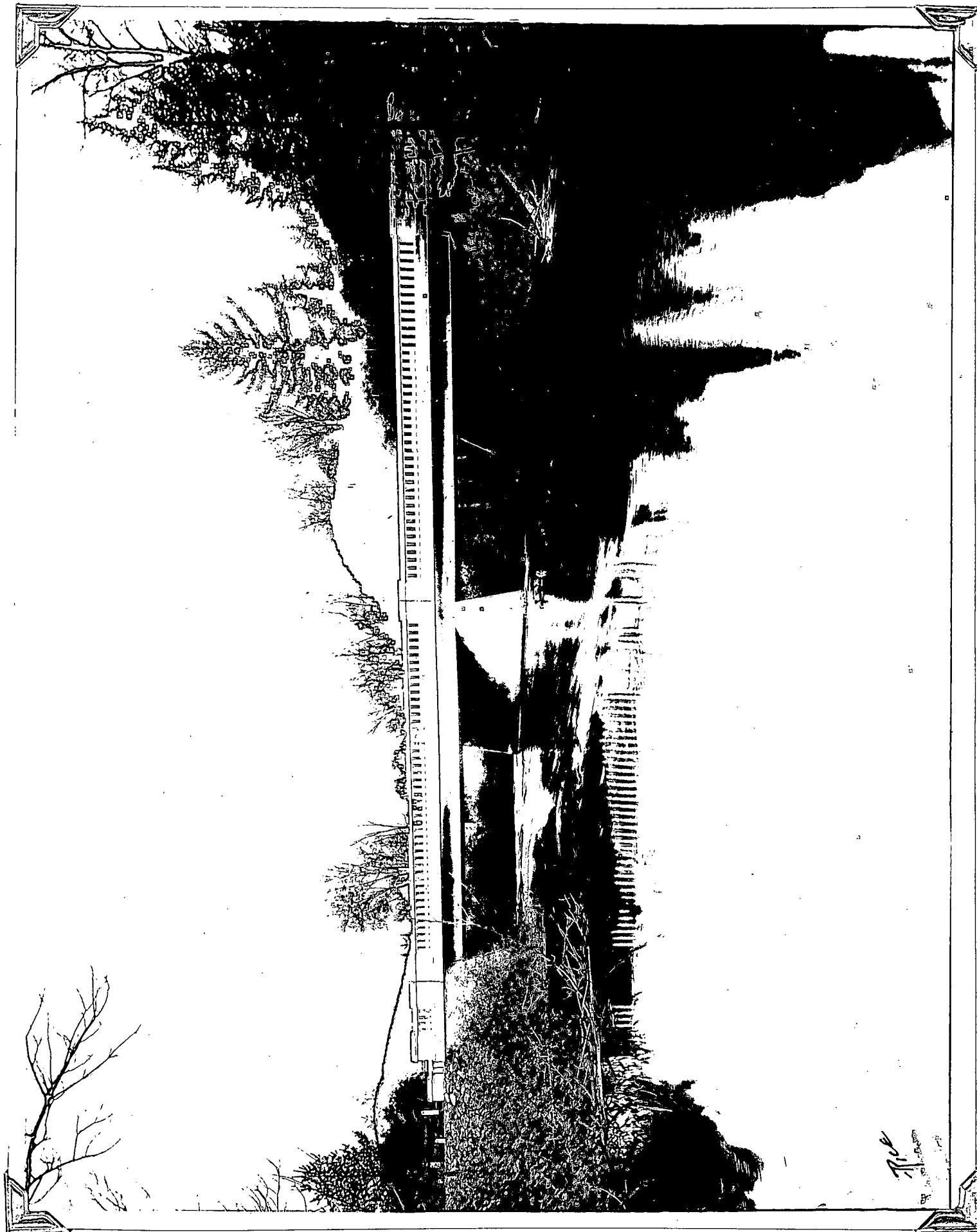
BARSALOU BRIDGE OVER YAMASKA RIVER IN THE CITY OF ST.HYACINTHE, ST.HYACINTHE COUNTY.- This bridge, of a total length of 633 ft., comprises seven spans each of which consists of two reinforced concrete through girders and transverse beams with reinforced concrete slab and asphalt wearing surface. The roadway is 20 ft. wide with two 4 ft. sidewalks on outside brackets. Built in 1936.



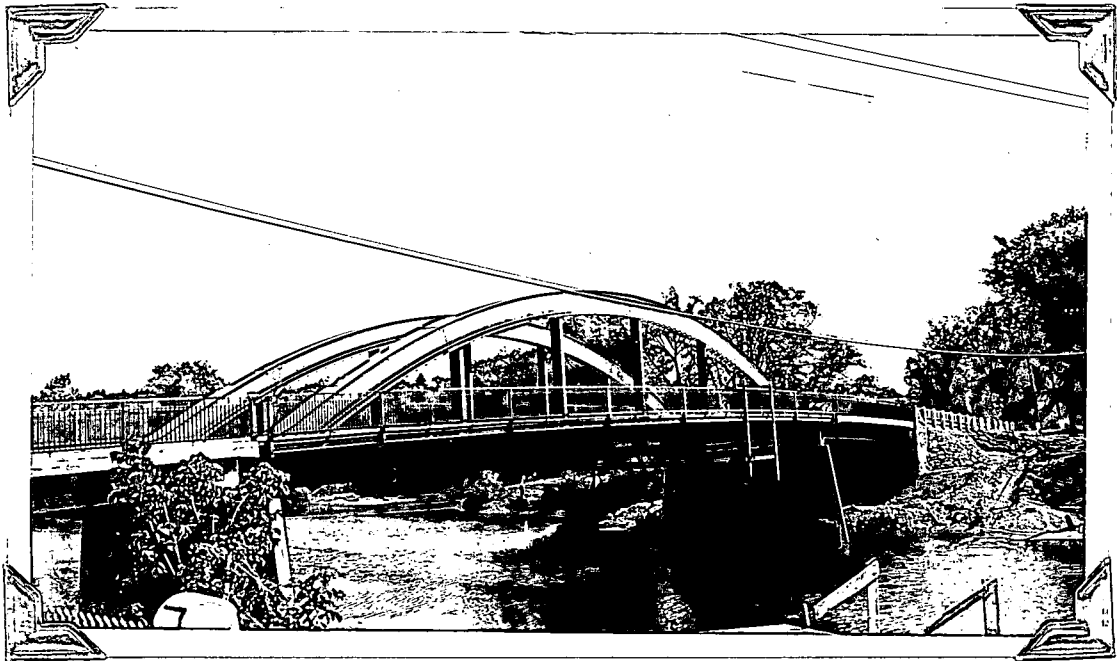
BRIDGE OVER RIVER DU NORD AT ST.ANDREWS EAST, ARGENTEUIL COUNTY. (GRENVILLE-ST.ANDREWS EAST HIGHWAY).- Three spans forming a total length of 210 ft. Reinforced concrete beams and slab on concrete substructure. Width of roadway 24 ft. Two 4 ft. 6 in. sidewalks. Built in 1936.



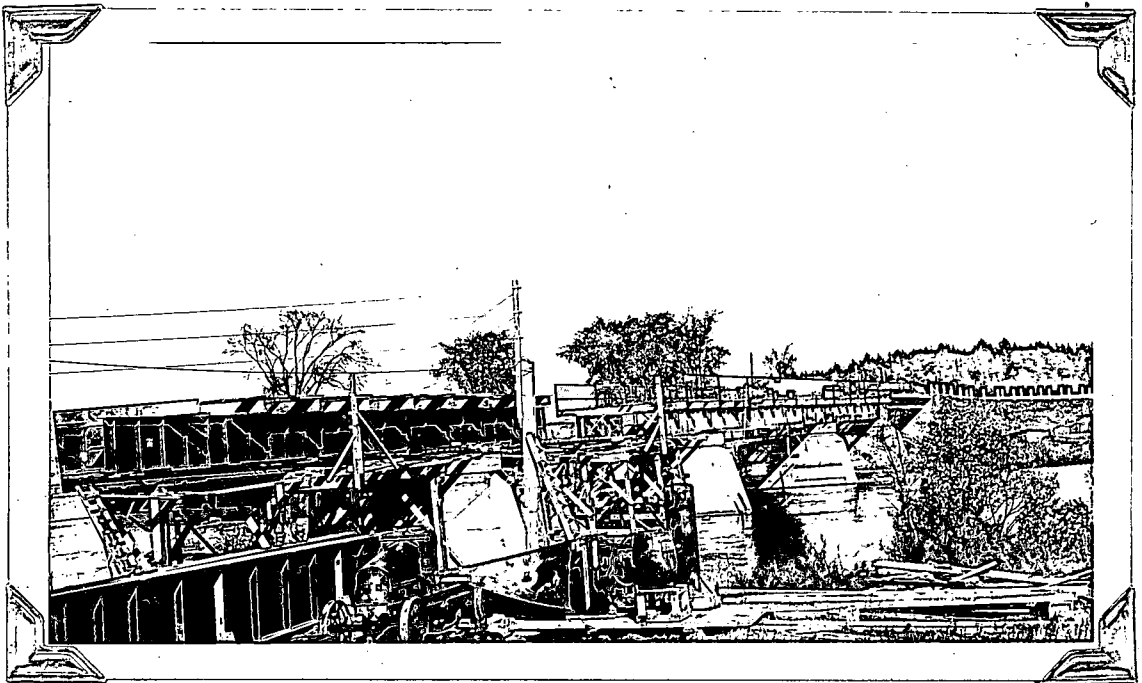
BRIDGE OVER RIVER DU NORD AT PIEDMONT, TERREBONNE COUNTY. (ON ROAD TO RAILWAY STATION).- Three spans forming a total length of 161 ft. Reinforced concrete beams and slab on concrete substructure. Width of roadway 20 ft. Built in 1936.



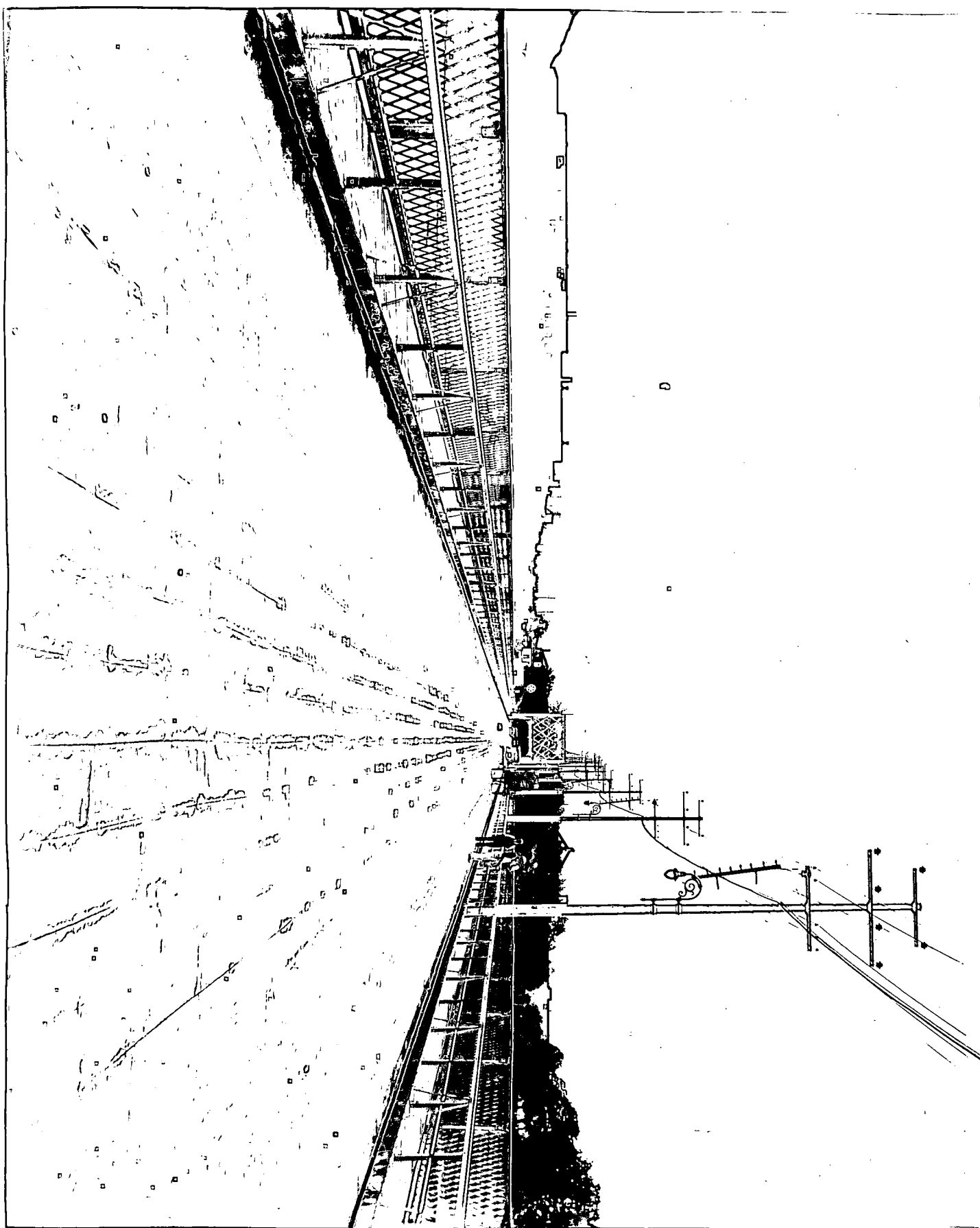
BRIDGE OVER RIVER DU NORD AT STE.ADELE, TERREBONNE COUNTY.
(STE.ADELE STATION-STE.MARGUERITE HIGHWAY).- Two spans forming a
total length of 100 ft. Reinforced concrete beams and slab on
concrete substructure. Width of roadway 24 ft. Built in 1936.



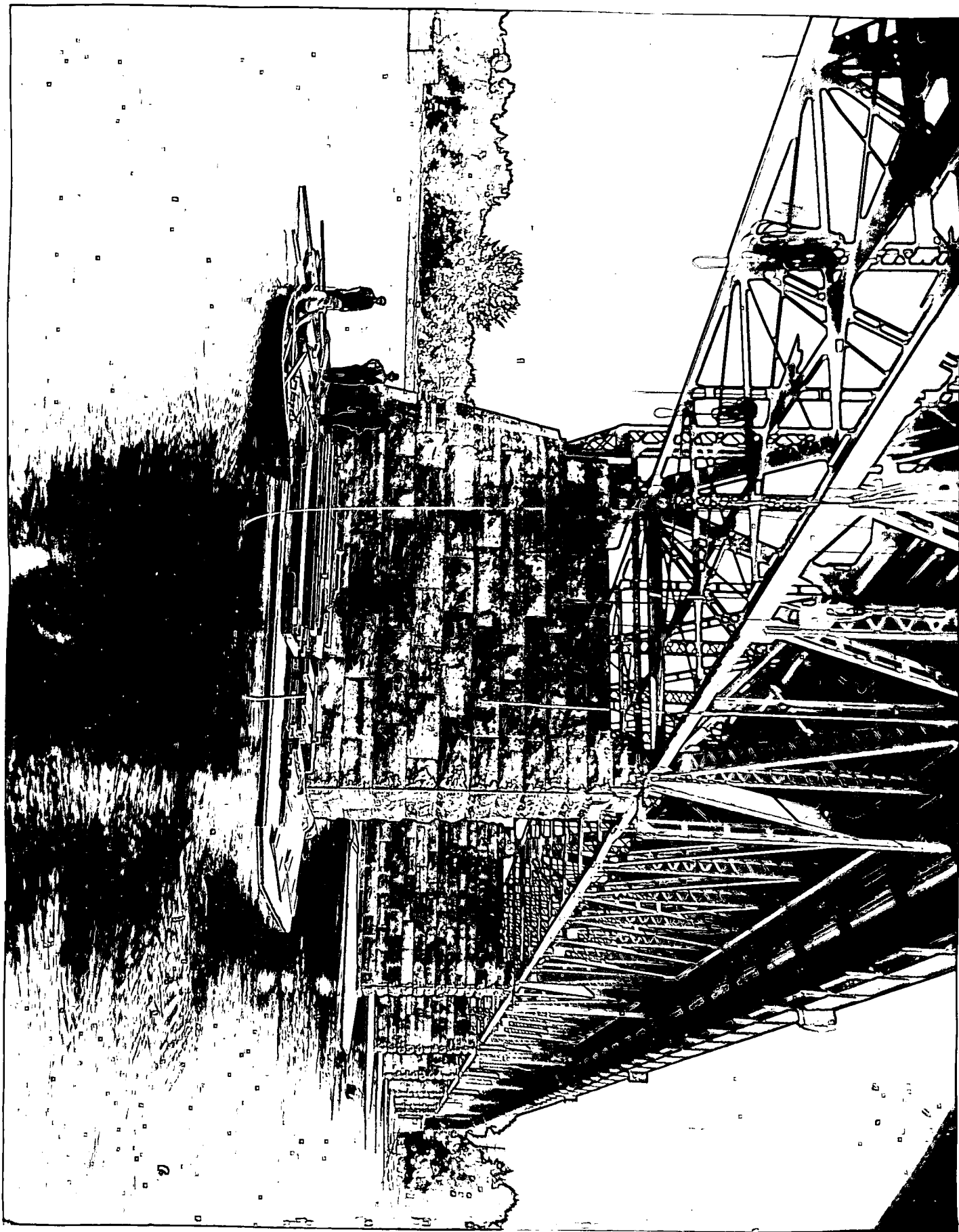
COLLEGE STREET BRIDGE OVER MASSAWIPPI RIVER AT LENNOXVILLE, SHERBROOKE COUNTY. (BEAUCEVILLE-SHERBROOKE HIGHWAY).- One 140 ft. steel arch and two 50 ft. reinforced concrete approach spans resting on concrete substructure. Reinforced concrete deck with a 24 ft. roadway. Two 5 ft. sidewalks on outside brackets.



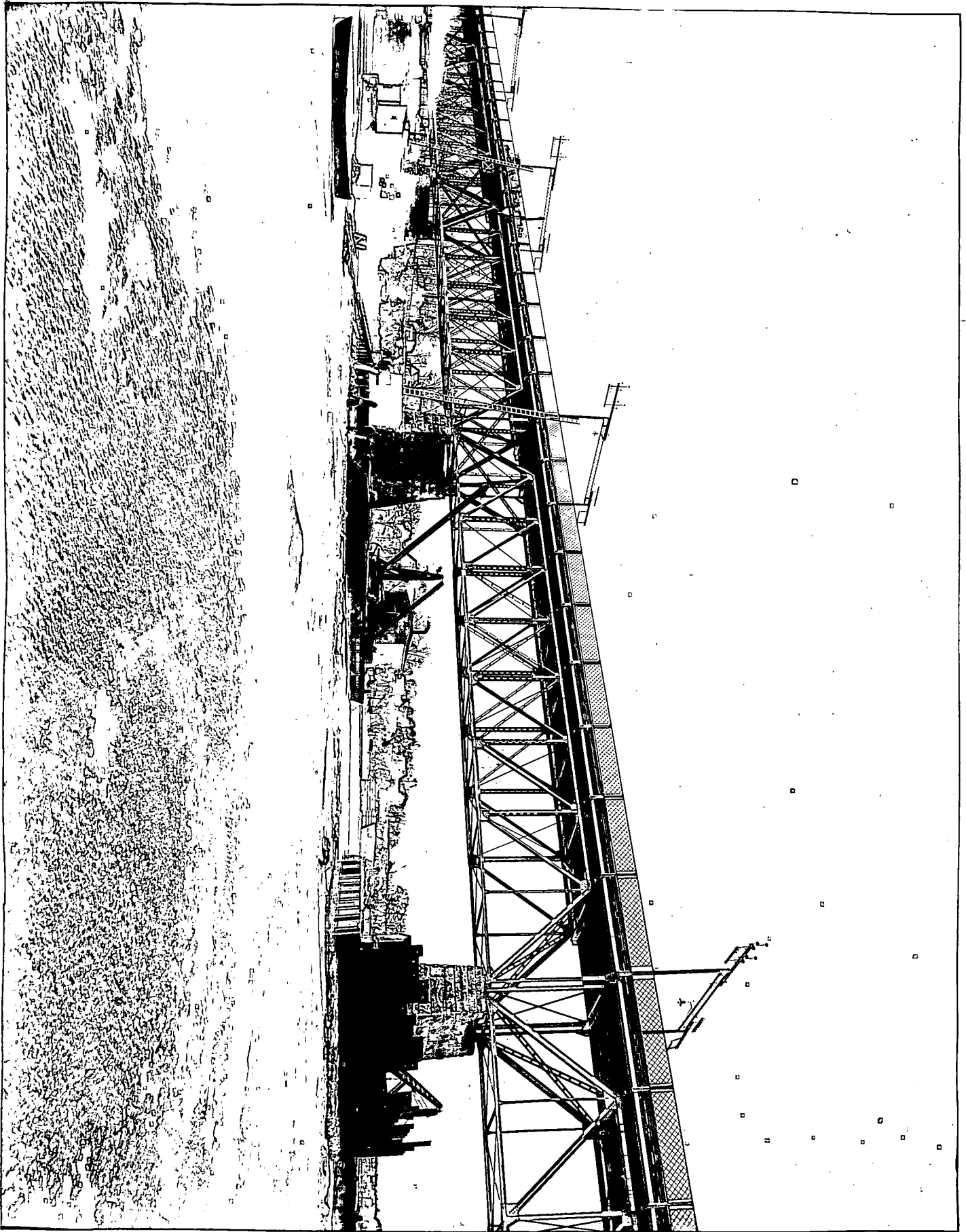
BRIDGE OVER ST. FRANCIS RIVER BETWEEN BISHOPTON AND DUDSWELL, WOLFE COUNTY.- Total length 366 ft. Two 85 ft. and two 68 ft. steel spans and one 60 ft. reinforced concrete span. Width of roadway 20 ft. Continuous welded plate girders. Under construction.



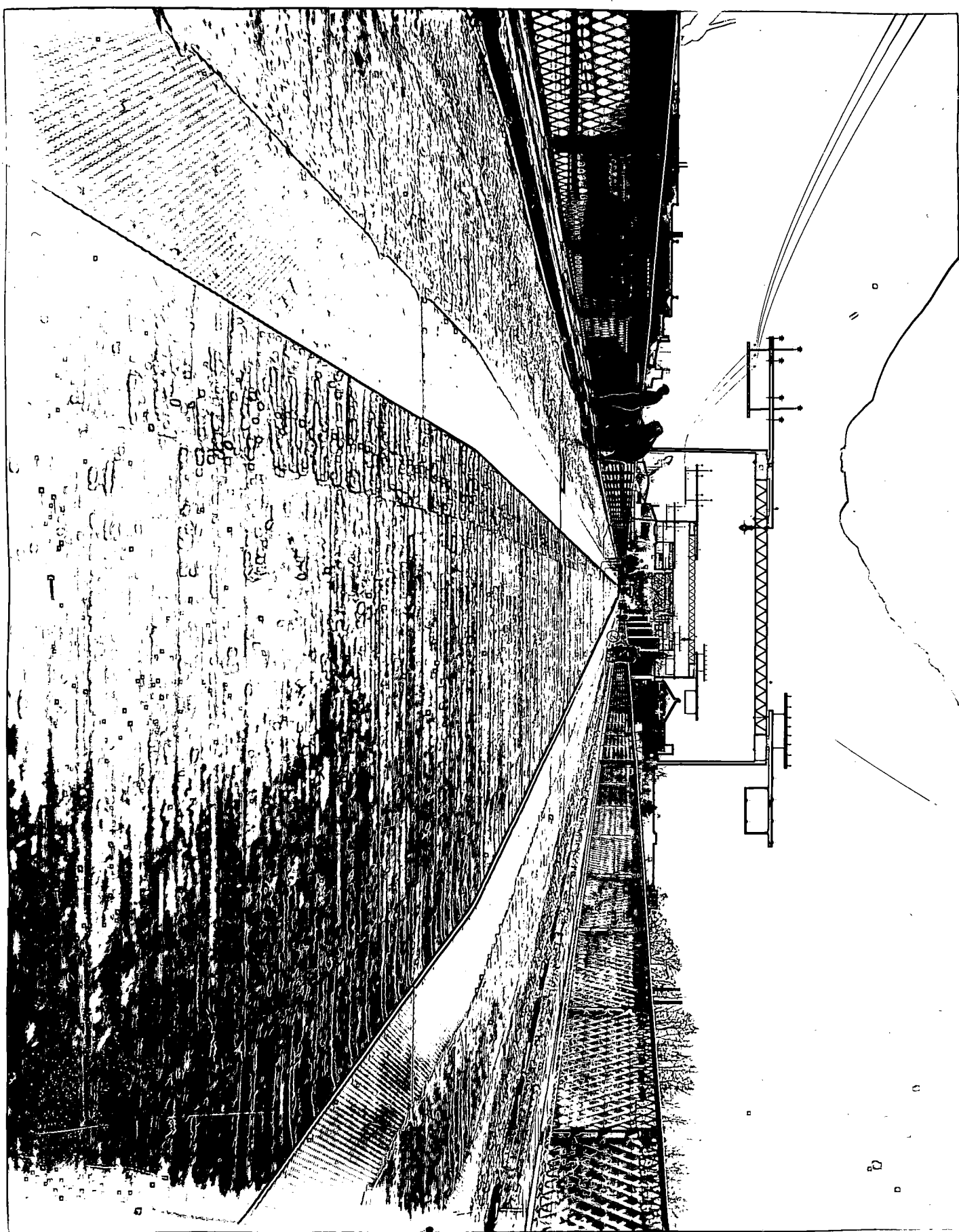
BRIDGE OVER THE WEST CHANNEL OF THE ST. MAURICE RIVER, AT THREE-RIVERS. View looking West. Repairs and improvements completed. Photo shows asphalt planking in place, new sidewalks and new tubular poles carrying transmission lines and ornamental light globes.



BRIDGE OVER THE WEST CHANNEL OF THE ST. MAURICE RIVER, AT THREE-RIVERS. View showing the substructure down stream side, piers completely repaired (work carried out during 1936-37).



BRIDGE OVER THE WEST CHANNEL OF THE ST. MAURICE RIVER, AT
THREE-RIVERS. View showing the substructure down stream
side during the repairs to piers, 6, 7 and 8.



BRIDGE OVER THE WEST CHANNEL OF THE ST. MAURICE RIVER, AT THREE-RIVERS. View showing entrance to bridge, East side. Condition of flooring before works of improvement and system of supports for transmission lines and lighting.