








Carte index des zones de chasse

Légende des cartes de zones :

-  Réserve faunique
-  Pourvoirie à droits exclusifs
-  Zone d'exploitation contrôlée (ZEC)
-  Terres de catégorie I et II

-  Parc national du Québec, parc national du Canada, réserve écologique et territoire d'interdiction de chasse
-  Territoire de restriction de chasse
-  Refuge faunique

-  Limite de zone de chasse
-  Subdivision de zone de chasse

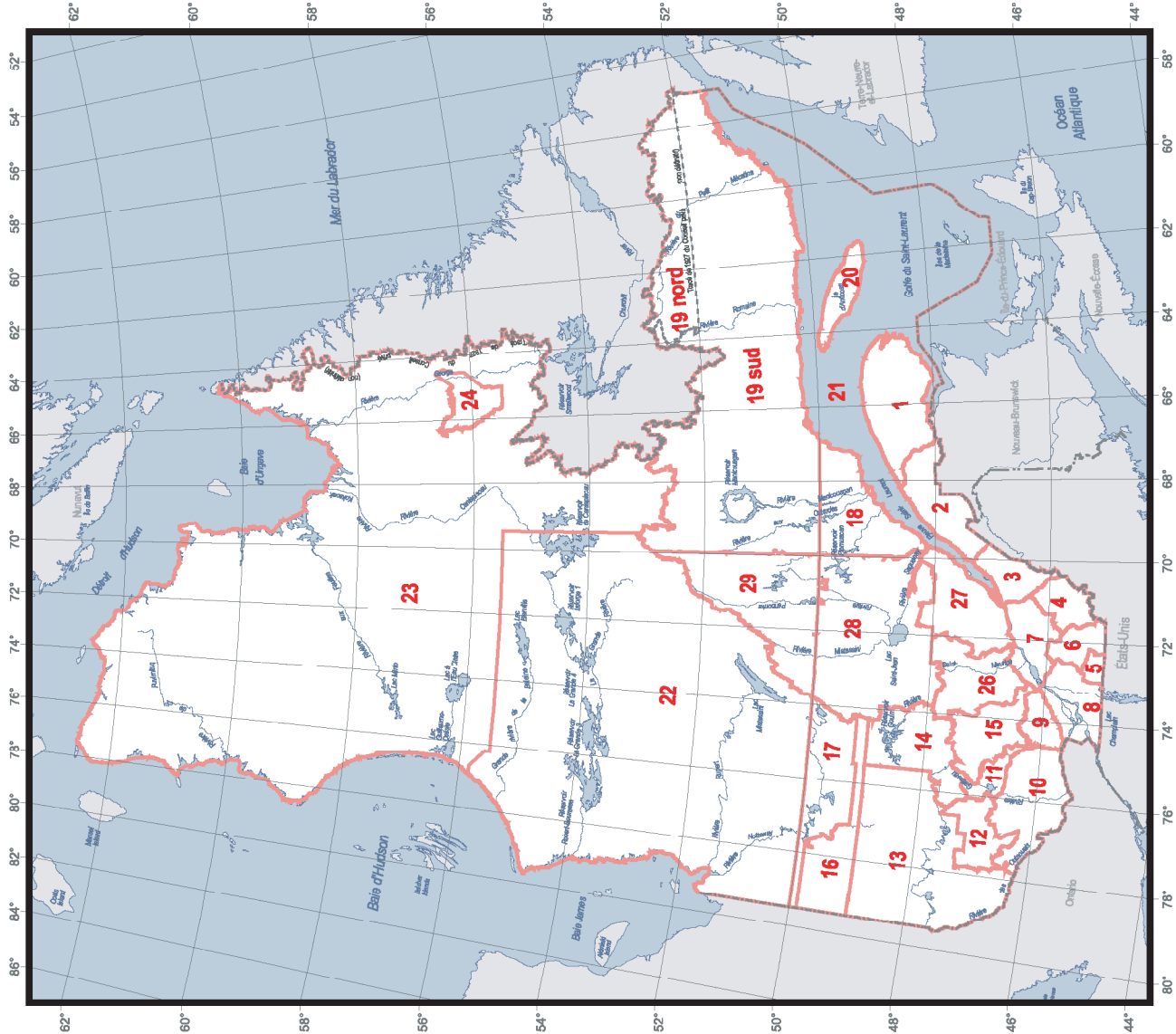
-  Frontière internationale
-  Frontière interprovinciale et interterritoriale
-  Frontière Québec - Terre-Neuve-et-Labrador (cette frontière n'est pas définitive)

Projection cartographique :
Conique de Lambert avec deux parallèles d'échelle conservée (46° et 60°)



Sources :

- Zone de chasse, territoire faunique, territoire de restriction et d'interdiction de chasse : Ministère des Ressources naturelles et de la Faune, 2005
- Territoire de conservation et de protection : Ministère du Développement durable, de l'Environnement et des Parcs, 2005
- Réalisation : Direction générale de l'information géographique en collaboration avec la Direction générale du développement et de l'aménagement de la faune



ZONE 1

Map of the Gaspésie region in Quebec, Canada, showing various protected areas and geographical features. The map is divided into three numbered zones: 18 (southwest), 21 (northwest), and 2 (southeast). Key locations include Montserrat, Cap-Chat, Saint-Amand, and various rivers and lakes. A scale bar indicates distances up to 40 km. The map is titled "ZONE 1" in the top left corner.

66°



ZONE 3

Edmundston

Nouveau-Brunswick

2

3 (est)

3 (ouest)

3

4

7

6

27

0 20 40 km

Note: une légende est disponible sur la page de la carte index

70°

71°

72°

46°

47°

48°

49°

50°

51°

52°

53°

54°

55°

56°

57°

58°

59°

60°

61°

62°

63°

64°

65°

66°

67°

68°

69°

70°

71°

72°

73°

74°

75°

76°

77°

78°

79°

80°

81°

82°

83°

84°

85°

86°

87°

88°

89°

90°

91°

92°

93°

94°

95°

96°

97°

98°

99°

100°

101°

102°

103°

104°

105°

106°

107°

108°

109°

110°

111°

112°

113°

114°

115°

116°

117°

118°

119°

120°

121°

122°

123°

124°

125°

126°

127°

128°

129°

130°

131°

132°

133°

134°

135°

136°

137°

138°

139°

140°

141°

142°

143°

144°

145°

146°

147°

148°

149°

150°

151°

152°

153°

154°

155°

156°

157°

158°

159°

160°

161°

162°

163°

164°

165°

166°

167°

168°

169°

170°

171°

172°

173°

174°

175°

176°

177°

178°

179°

180°

181°

182°

183°

184°

185°

186°

187°

188°

189°

190°

191°

192°

193°

194°

195°

196°

197°

198°

199°

200°

201°

202°

203°

204°

205°

206°

207°

208°

209°

210°

211°

212°

213°

214°

215°

216°

217°

218°

219°

220°

221°

222°

223°

224°

225°

226°

227°

228°

229°

230°

231°

232°

233°

234°

235°

236°

237°

238°

239°

240°

241°

242°

243°

244°

245°

246°

247°

248°

249°

250°

251°

252°

253°

254°

255°

256°

257°

258°

259°

260°

261°

262°

263°

264°

265°

266°

267°

268°

269°

270°

271°

272°

273°

274°

275°

276°

277°

278°

279°

280°

281°

282°

283°

284°

285°

286°

287°

288°

289°

290°

291°

292°

293°

294°

295°

296°

297°

298°

299°

300°

301°

302°

303°

304°

305°

306°

307°

308°

309°

310°

311°

312°

313°

314°

315°

316°

317°

318°

319°

320°

321°

322°

323°

324°

325°

326°

327°

328°

329°

330°

331°

332°

333°

334°

335°

336°

337°

338°

339°

340°

341°

342°

343°

344°

345°

346°

347°

348°

349°

350°

351°

352°

353°

354°

355°

356°

357°

358°

359°

360°

361°

362°

363°

364°

365°

366°

367°

368°

369°

370°

371°

372°

373°

374°

375°

376°

377°

378°

379°

380°

381°

382°

383°

384°

385°

386°

387°

388°

389°

390°

391°

392°

393°

394°

395°

396°

397°

398°

399°

400°

401°

402°

403°

404°

405°

406°

407°

408°

409°

410°

411°

412°

413°

414°

415°

416°

417°

418°

419°

420°

421°

422°

423°

424°

425°

426°

427°

428°

429°

430°

431°

432°

433°

434°

435°

70°

ZONE 4

This map shows the Saguenay-Lac Saint-Jean region in Quebec, Canada, with a focus on Zone 4. The map includes the following details:

- Geographical Features:** The Saguenay Fjord (Fjord Saguenay) is prominent on the left. Major rivers include the Saguenay River (Rivière Saguenay), St. Lawrence River (Rivière Saint-Louis), and St. John's River (Rivière Saint-Jean). Large lakes such as Lac Saint-Jean, Lac Beauport, and Lac Beauport are shown.
- Towns and Settlements:** Numerous towns are marked, including Saguenay, Lac-Saint-Jean, Beauport, and various smaller communities like Saint-Jovite, Saint-Émile, and Saint-Georges.
- Road Network:** A dense network of roads is depicted, with major routes like the Autoroute 55 and various provincial roads (e.g., 108, 163, 212, 253, 255, 256, 257, 258, 259, 260, 261, 262, 263, 264, 265, 266, 267, 268, 269, 270, 271, 272, 273, 274, 275, 276, 277, 278, 279, 280, 281, 282, 283, 284, 285, 286, 287, 288, 289, 290, 291, 292, 293, 294, 295, 296, 297, 298, 299, 300, 301, 302, 303, 304, 305, 306, 307, 308, 309, 310, 311, 312, 313, 314, 315, 316, 317, 318, 319, 320, 321, 322, 323, 324, 325, 326, 327, 328, 329, 330, 331, 332, 333, 334, 335, 336, 337, 338, 339, 340, 341, 342, 343, 344, 345, 346, 347, 348, 349, 350, 351, 352, 353, 354, 355, 356, 357, 358, 359, 360, 361, 362, 363, 364, 365, 366, 367, 368, 369, 370, 371, 372, 373, 374, 375, 376, 377, 378, 379, 380, 381, 382, 383, 384, 385, 386, 387, 388, 389, 390, 391, 392, 393, 394, 395, 396, 397, 398, 399, 400, 401, 402, 403, 404, 405, 406, 407, 408, 409, 410, 411, 412, 413, 414, 415, 416, 417, 418, 419, 420, 421, 422, 423, 424, 425, 426, 427, 428, 429, 430, 431, 432, 433, 434, 435, 436, 437, 438, 439, 440, 441, 442, 443, 444, 445, 446, 447, 448, 449, 450, 451, 452, 453, 454, 455, 456, 457, 458, 459, 460, 461, 462, 463, 464, 465, 466, 467, 468, 469, 470, 471, 472, 473, 474, 475, 476, 477, 478, 479, 480, 481, 482, 483, 484, 485, 486, 487, 488, 489, 490, 491, 492, 493, 494, 495, 496, 497, 498, 499, 500, 501, 502, 503, 504, 505, 506, 507, 508, 509, 510, 511, 512, 513, 514, 515, 516, 517, 518, 519, 520, 521, 522, 523, 524, 525, 526, 527, 528, 529, 530, 531, 532, 533, 534, 535, 536, 537, 538, 539, 540, 541, 542, 543, 544, 545, 546, 547, 548, 549, 550, 551, 552, 553, 554, 555, 556, 557, 558, 559, 560, 561, 562, 563, 564, 565, 566, 567, 568, 569, 570, 571, 572, 573, 574, 575, 576, 577, 578, 579, 580, 581, 582, 583, 584, 585, 586, 587, 588, 589, 590, 591, 592, 593, 594, 595, 596, 597, 598, 599, 600, 601, 602, 603, 604, 605, 606, 607, 608, 609, 610, 611, 612, 613, 614, 615, 616, 617, 618, 619, 620, 621, 622, 623, 624, 625, 626, 627, 628, 629, 630, 631, 632, 633, 634, 635, 636, 637, 638, 639, 640, 641, 642, 643, 644, 645, 646, 647, 648, 649, 650, 651, 652, 653, 654, 655, 656, 657, 658, 659, 660, 661, 662, 663, 664, 665, 666, 667, 668, 669, 670, 671, 672, 673, 674, 675, 676, 677, 678, 679, 680, 681, 682, 683, 684, 685, 686, 687, 688, 689, 690, 691, 692, 693, 694, 695, 696, 697, 698, 699, 700, 701, 702, 703, 704, 705, 706, 707, 708, 709, 710, 711, 712, 713, 714, 715, 716, 717, 718, 719, 720, 721, 722, 723, 724, 725, 726, 727, 728, 729, 730, 731, 732, 733, 734, 735, 736, 737, 738, 739, 740, 741, 742, 743, 744, 745, 746, 747, 748, 749, 750, 751, 752, 753, 754, 755, 756, 757, 758, 759, 760, 761, 762, 763, 764, 765, 766, 767, 768, 769, 770, 771, 772, 773, 774, 775, 776, 777, 778, 779, 780, 781, 782, 783, 784, 785, 786, 787, 788, 789, 790, 791, 792, 793, 794, 795, 796, 797, 798, 799, 800, 801, 802, 803, 804, 805, 806, 807, 808, 809, 810, 811, 812, 813, 814, 815, 816, 817, 818, 819, 820, 821, 822, 823, 824, 825, 826, 827, 828, 829, 830, 831, 832, 833, 834, 835, 836, 837, 838, 839, 840, 841, 842, 843, 844, 845, 846, 847, 848, 849, 850, 851, 852, 853, 854, 855, 856, 857, 858, 859, 860, 861, 862, 863, 864, 865, 866, 867, 868, 869, 870, 871, 872, 873, 874, 875, 876, 877, 878, 879, 880, 881, 882, 883, 884, 885, 886, 887, 888, 889, 890, 891, 892, 893, 894, 895, 896, 897, 898, 899, 900, 901, 902, 903, 904, 905, 906, 907, 908, 909, 910, 911, 912, 913, 914, 915, 916, 917, 918, 919, 920, 921, 922, 923, 924, 925, 926, 927, 928, 929, 930, 931, 932, 933, 934, 935, 936, 937, 938, 939, 940, 941, 942, 943, 944, 945, 946, 947, 948, 949, 950, 951, 952, 953, 954, 955, 956, 957, 958, 959, 960, 961, 962, 963, 964, 965, 966, 967, 968, 969, 970, 971, 972, 973, 974, 975, 976, 977, 978, 979, 980, 981, 982, 983, 984, 985, 986, 987, 988, 989, 990, 991, 992, 993, 994, 995, 996, 997, 998, 999, 1000).
- Scale and Orientation:** A scale bar indicates distances up to 40 km. The map is oriented with North at the top.
- Neighboring Regions:** The map shows the borders with the Gaspésie region to the east, the Bas-Saint-Laurent region to the south, and the Saguen

ZONES 5 et 6

40 km

Note : une légende est disponible sur la page de la carte index

73°

ZONE 7

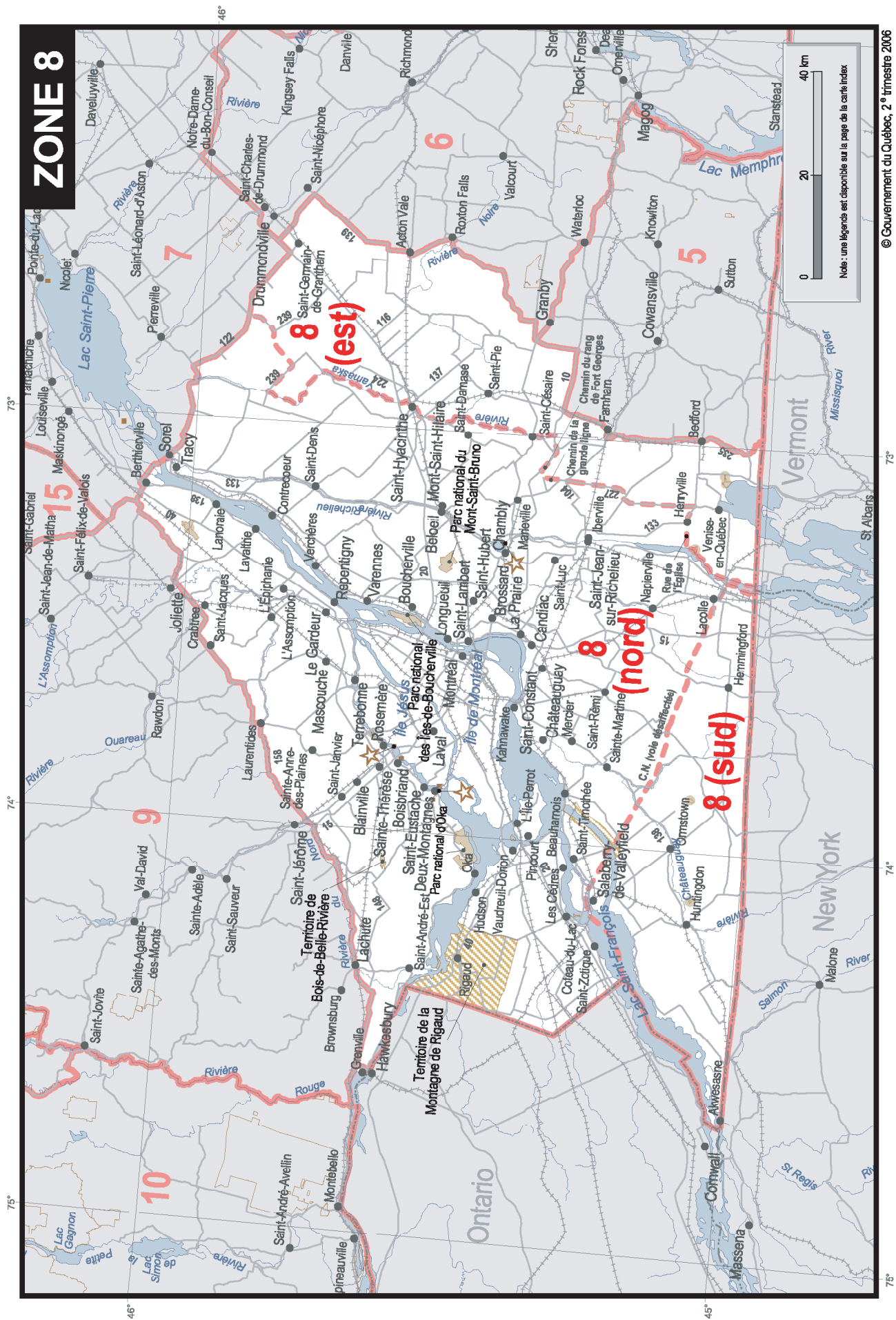
7 (sud)

7 (nord)

0 20 40 km

Note: une légende est disponible sur la page de la carte index

72°



ZONE 9

9 (est)

9 (ouest)

9 (centre)

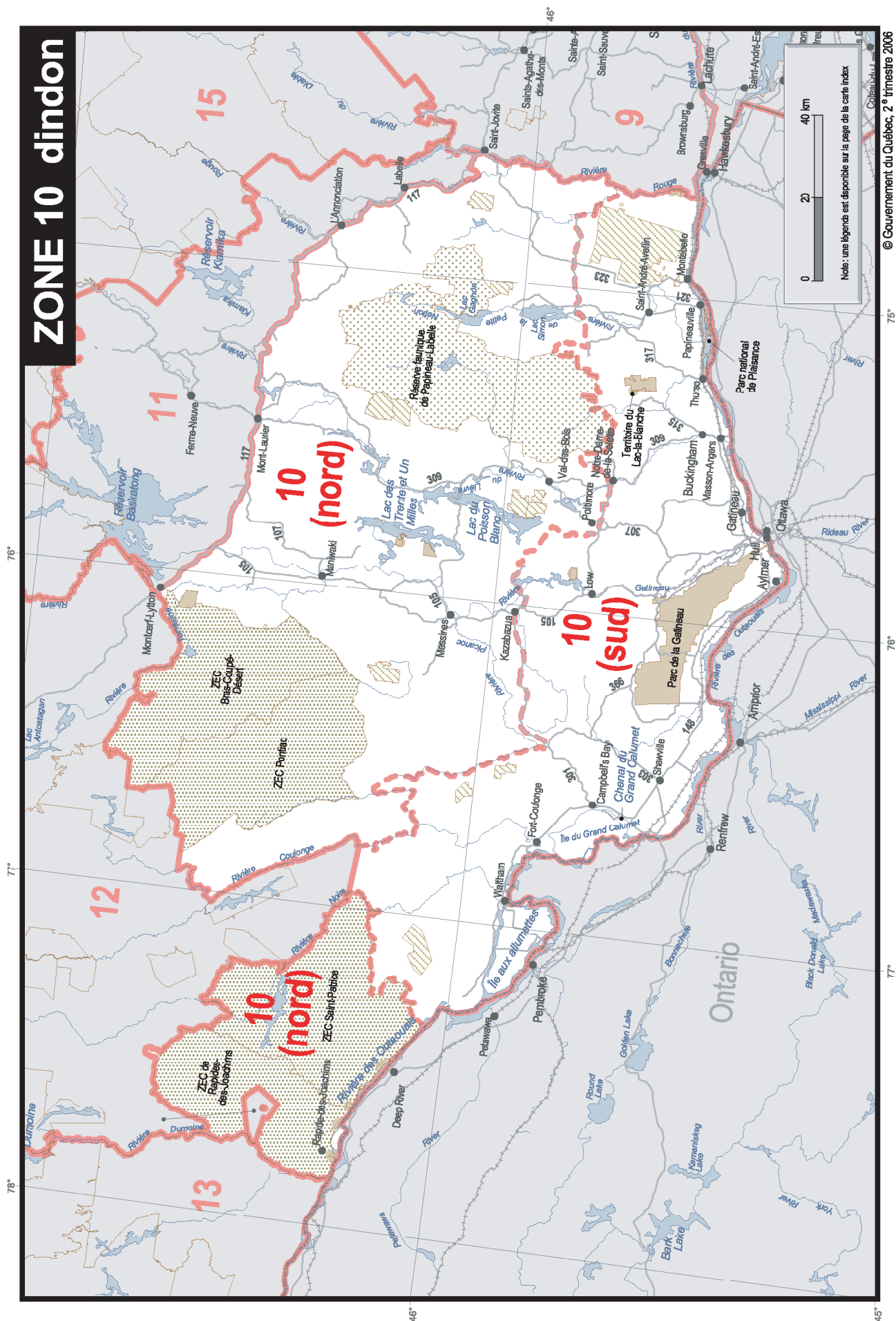
Note : une légende est disponible sur la page de la carte index

0 20 40 km

© Gouvernement du Québec, 2^e trimestre 2006

74°

ZONE 10 d'indon



ZONES 10 et 11

11 (est)

11 (ouest)

10 (est)

10 (ouest)

12

13

14

15

9

17

16

15

14

13

12

11

10

9

8

7

6

5

4

3

2

1

0

20

40

km

Note: une légende est disponible sur la page de la carte index

© Gouvernement du Québec, 2^e trimestre 2006

ZONES 12 et 13

Note: une légende est disponible sur la page de la carte index.

0 40 80 km

© Gouvernement du Québec, 2^e trimestre 2006

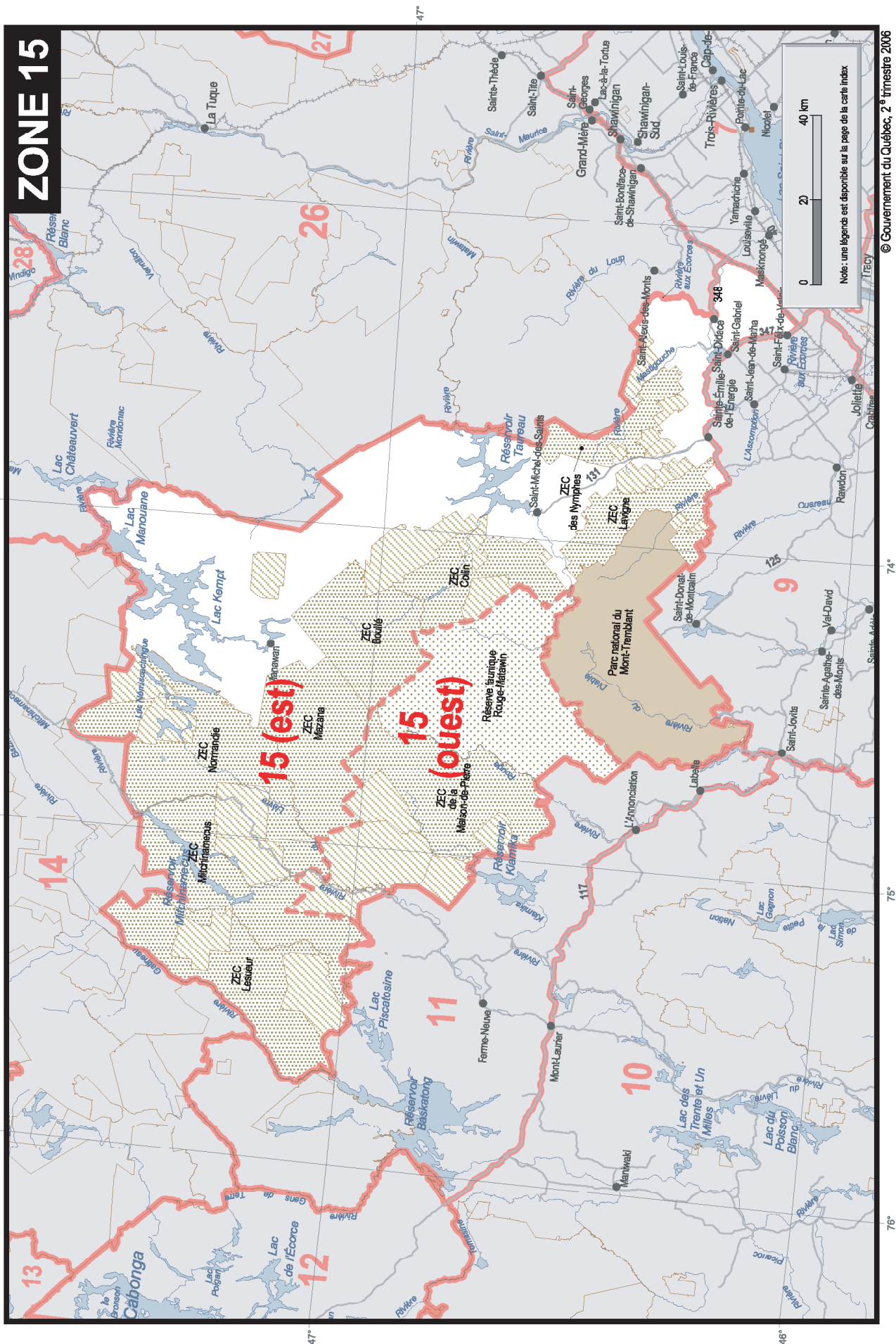
74°

75°

76°

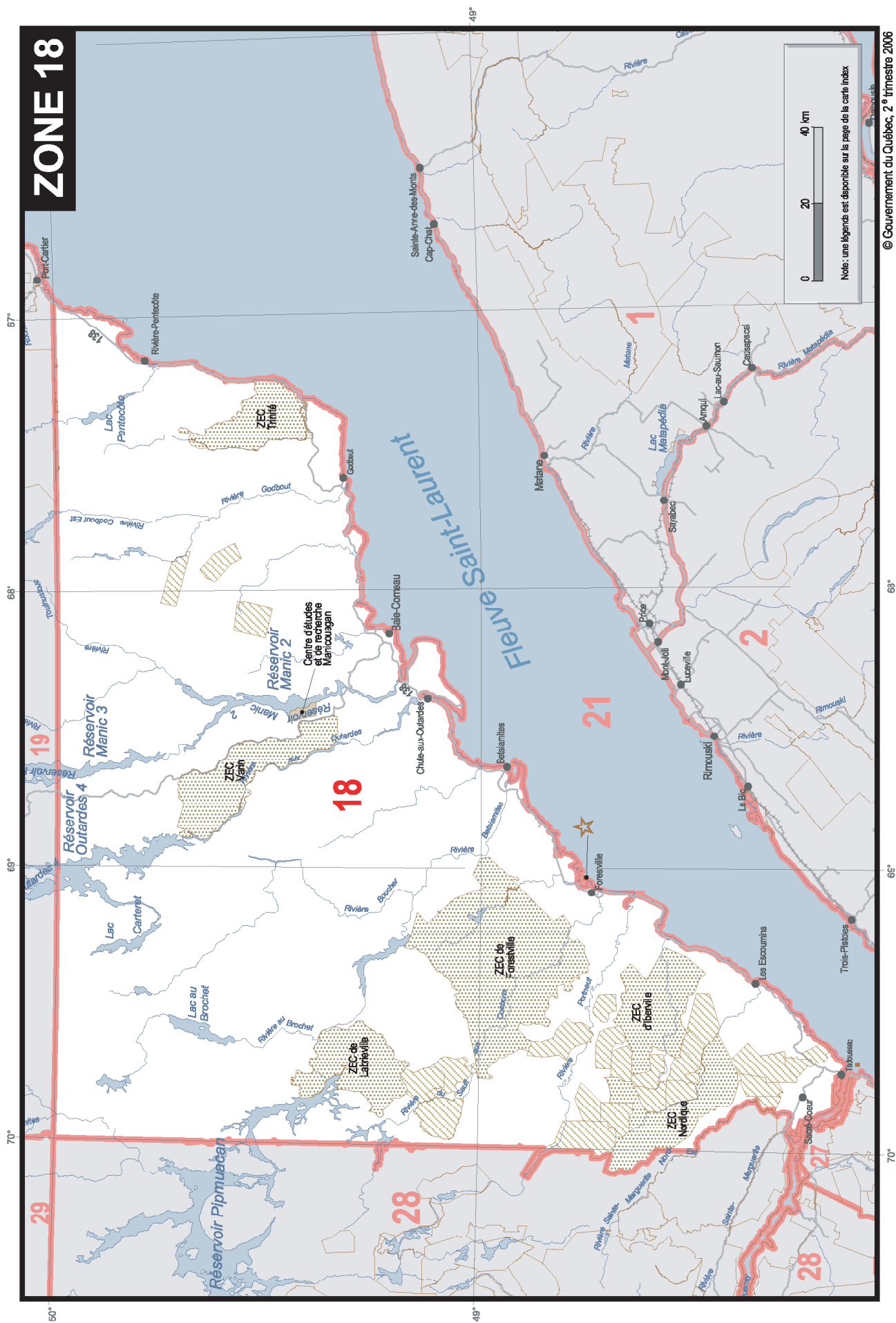
170

ZONE 15



[illegible]

ZONE 18



This map displays the Gaspésie region, highlighting various administrative zones and geographical features. Key elements include:

- Zones 19 sud et 19 nord**: Indicated by red dashed lines.
- Zone 19 sud (partie nord-ouest)**: A specific area within Zone 19 sud, also outlined in red.
- Geographical Features**: The Gulf of Saint-Lawrence (Golfe du Saint-Laurent), Saguenay Fjord (Fjord de Sagoué), and various rivers like the Saguenay River (Rivière Saguenay) and St. Lawrence River (Fleuve Saint-Laurent).
- Cities and Towns**: Labeled locations such as Cap-aux-Neules, Chaudière, and others.
- Scale and Orientation**: Includes a scale bar from 0 to 200 km and a north arrow.

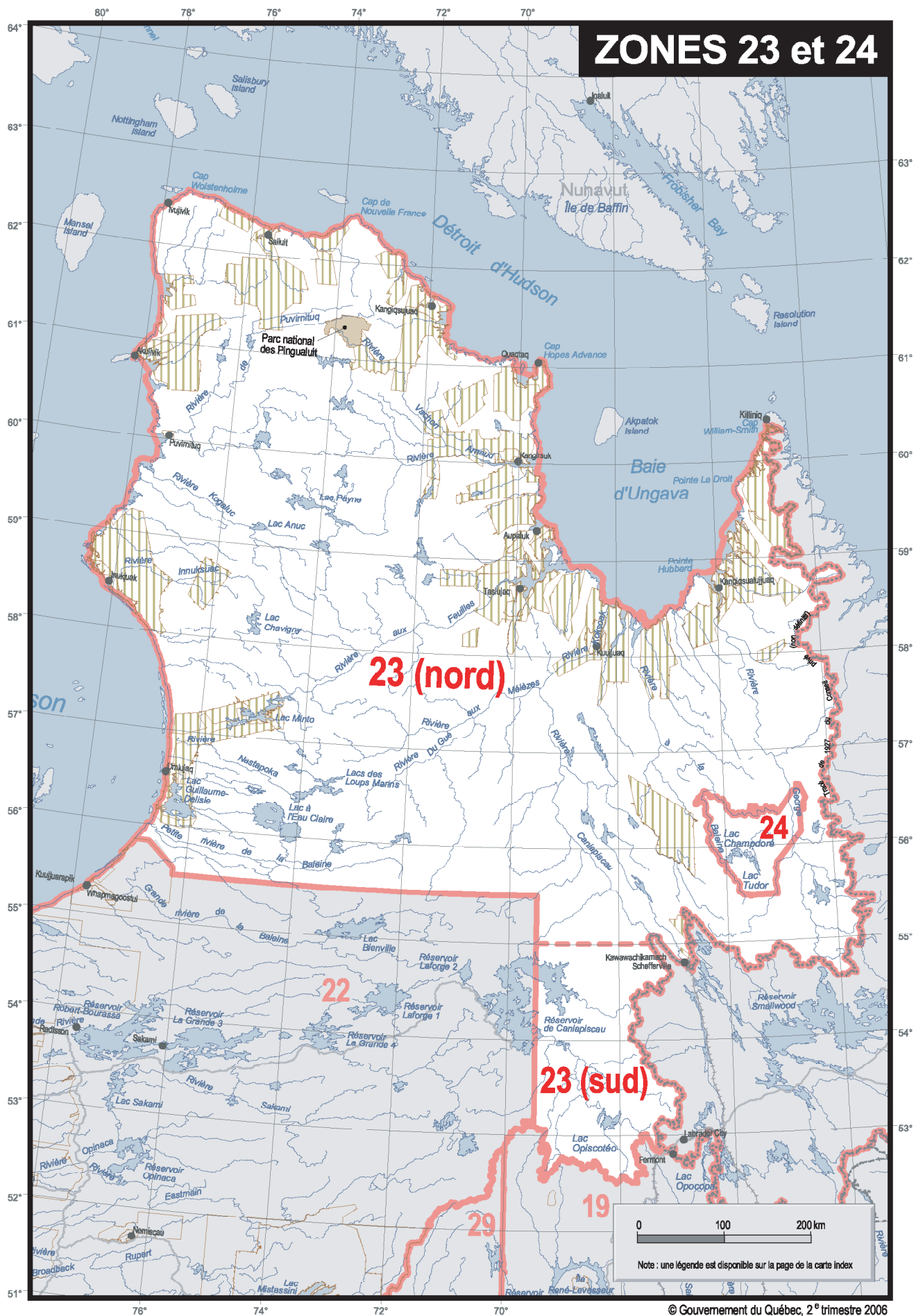
© Gouvernement du Québec, 2^e trimestre 2006

ZONES 20 et 21



[illegible]

© Gouvernement du Québec, 2^e trimestre 2006



ZONE 26

26 (ouest)

26 (est)

27

28

14

15

9

10

11

12

13

14

15

16

17

18

19

20

21

22

23

24

25

26

27

28

29

30

31

32

33

34

35

36

37

38

39

40

41

42

43

44

45

46

47

48

49

50

51

52

53

54

55

56

57

58

59

60

61

62

63

64

65

66

67

68

69

70

71

72

73

74

75

76

77

78

79

80

81

82

83

84

85

86

87

88

89

90

91

92

93

94

95

96

97

98

99

100

101

102

103

104

105

106

107

108

109

110

111

112

113

114

115

116

117

118

119

120

121

122

123

124

125

126

127

128

129

130

131

132

133

134

135

136

137

138

139

140

141

142

143

144

145

146

147

148

149

150

151

152

153

154

155

156

157

158

159

160

161

162

163

164

165

166

167

168

169

170

171

172

173

174

175

176

177

178

179

180

181

182

183

184

185

186

187

188

189

190

191

192

193

194

195

196

197

198

199

200

201

202

203

204

205

206

207

208

209

210

211

212

213

214

215

216

217

218

219

220

221

222

223

224

225

226

227

228

229

230

231

232

233

234

235

236

237

238

239

240

241

242

243

244

245

246

247

248

249

250

251

252

253

254

255

256

257

258

259

260

261

262

263

264

265

266

267

268

269

270

271

272

273

274

275

276

277

278

279

280

281

282

283

284

285

286

287

288

289

290

291

292

293

294

295

296

297

298

299

300

301

302

303

304

305

306

307

308

309

310

311

312

313

<

72°

ZONE 27

Map of Zone 27 in the Saguenay-Lac Saint-Jean region of Quebec. The map shows administrative boundaries, geographical features, and place names. The map is divided into three sub-zones: 27 (est), 27 (ouest), and 27 (sud). It includes a scale bar (0-40 km) and a note about the legend.

Note: une légende est disponible sur la page de la carte index

© Gouvernement du Québec, 2^e trimestre 2006

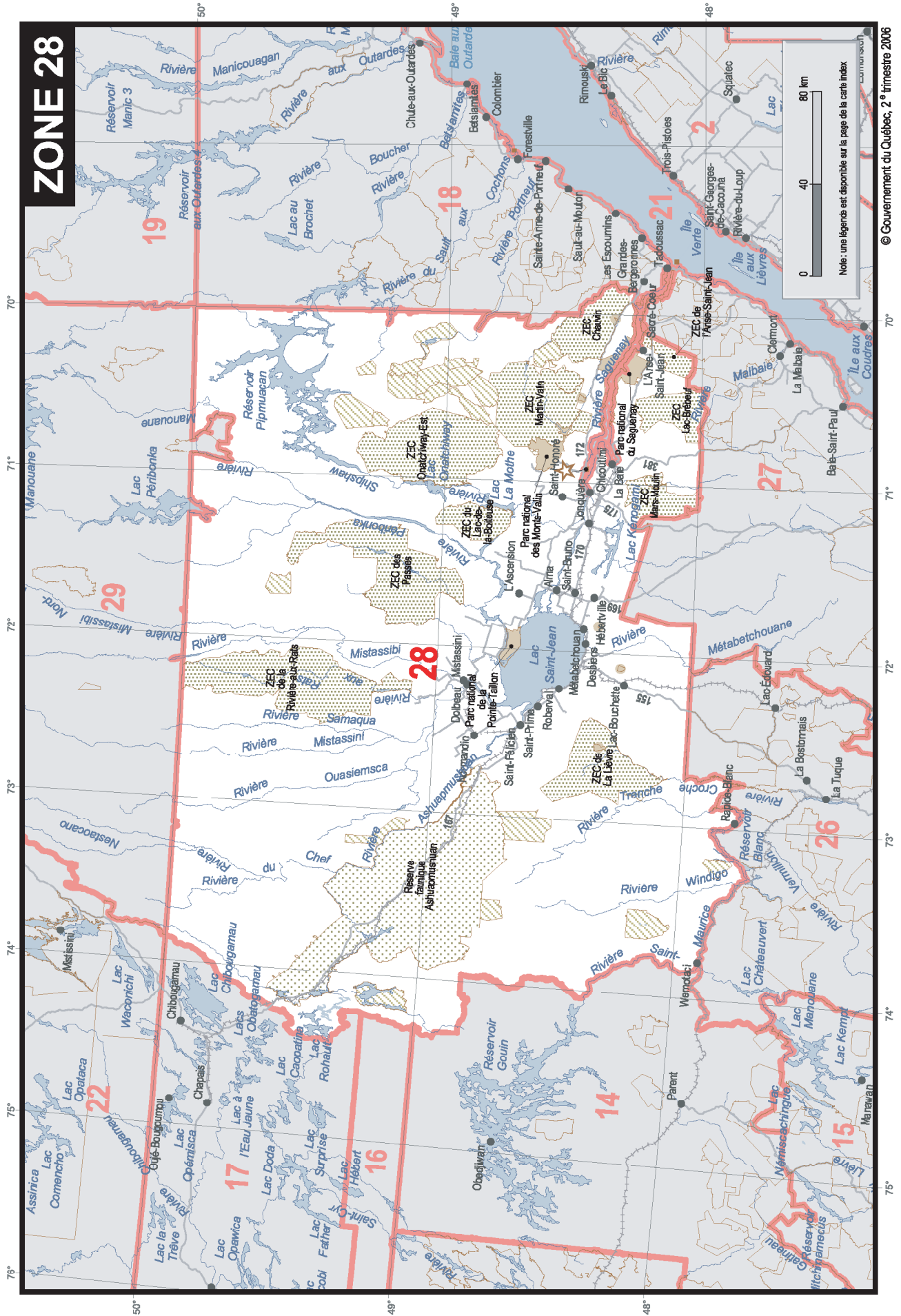
70°

71°

72°

37

ZONE 28



[illegible]© Gouvernement du Québec, 2^e trimestre 2006